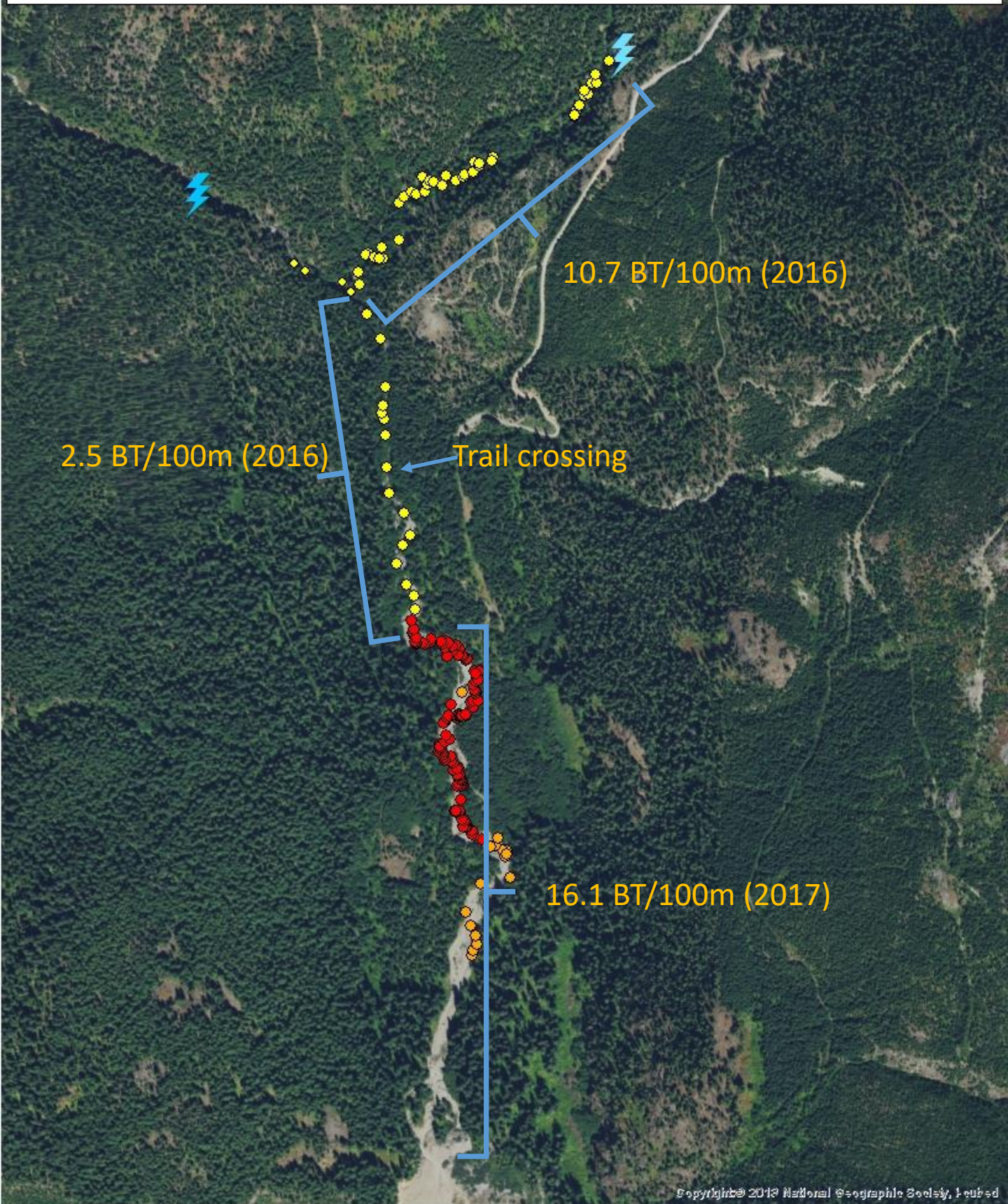
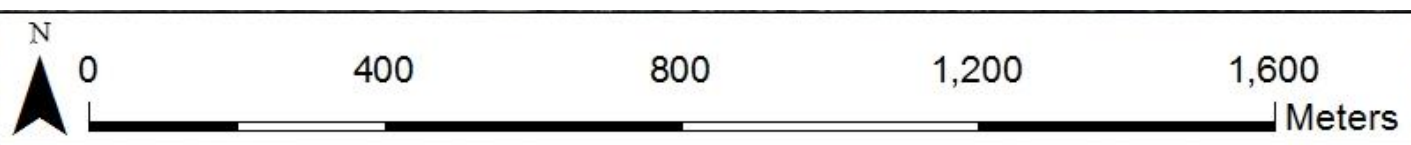


2.5 BT/100m (2016)

Trail crossing

10.7 BT/100m (2016)



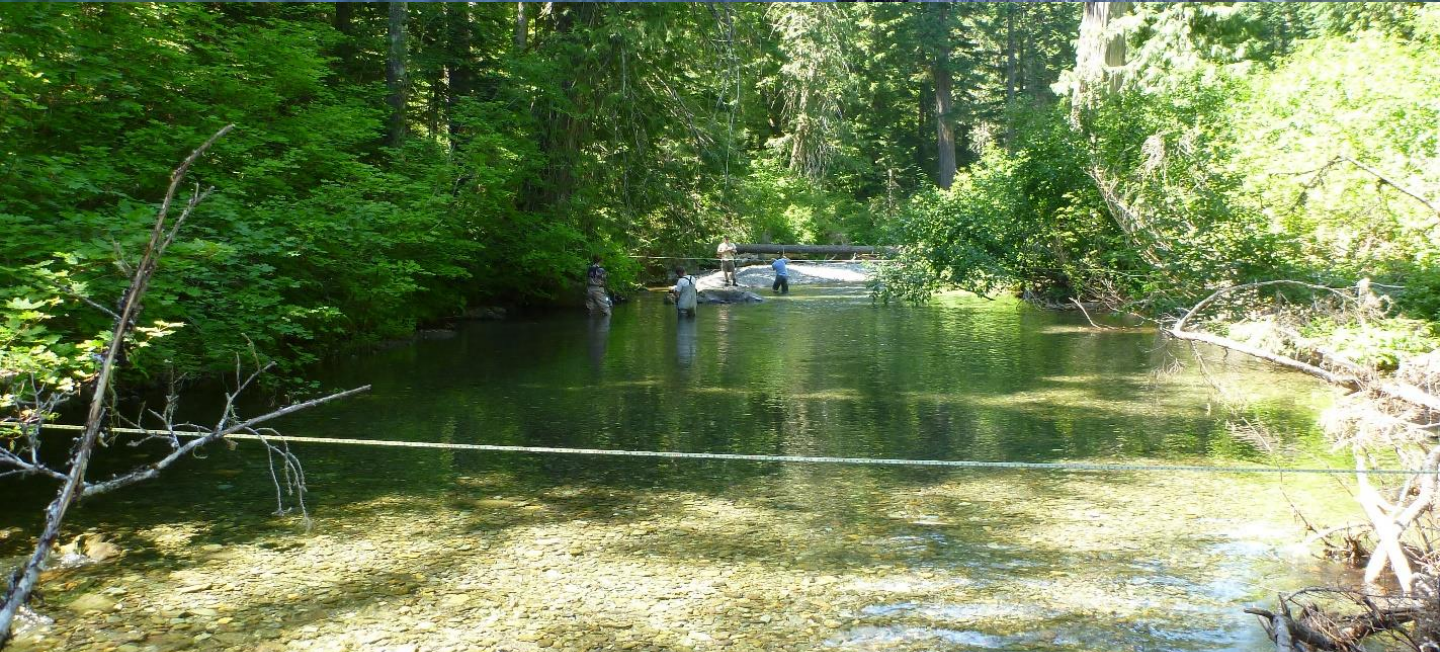




Habitat Survey from mouth to
impassable falls (LWD by USFS)



BOX CANYON PHABSIM HIGH AND MEDIUM
FLOW COMPLETE. LOW FLOW MEASUREMENTS 8/8/17.
DEPT OF ECOLOGY TO RUN PHABSIM MODEL



EXPLORATORY SNORKEL IN BOX CANYON ABOVE BIG
POOL FALLS

