



Chelsea Benner

Voluntary Stewardship Program Coordinator

Chelsea.benner@ecy.wa.gov

509-571-4155

The VSP Vision



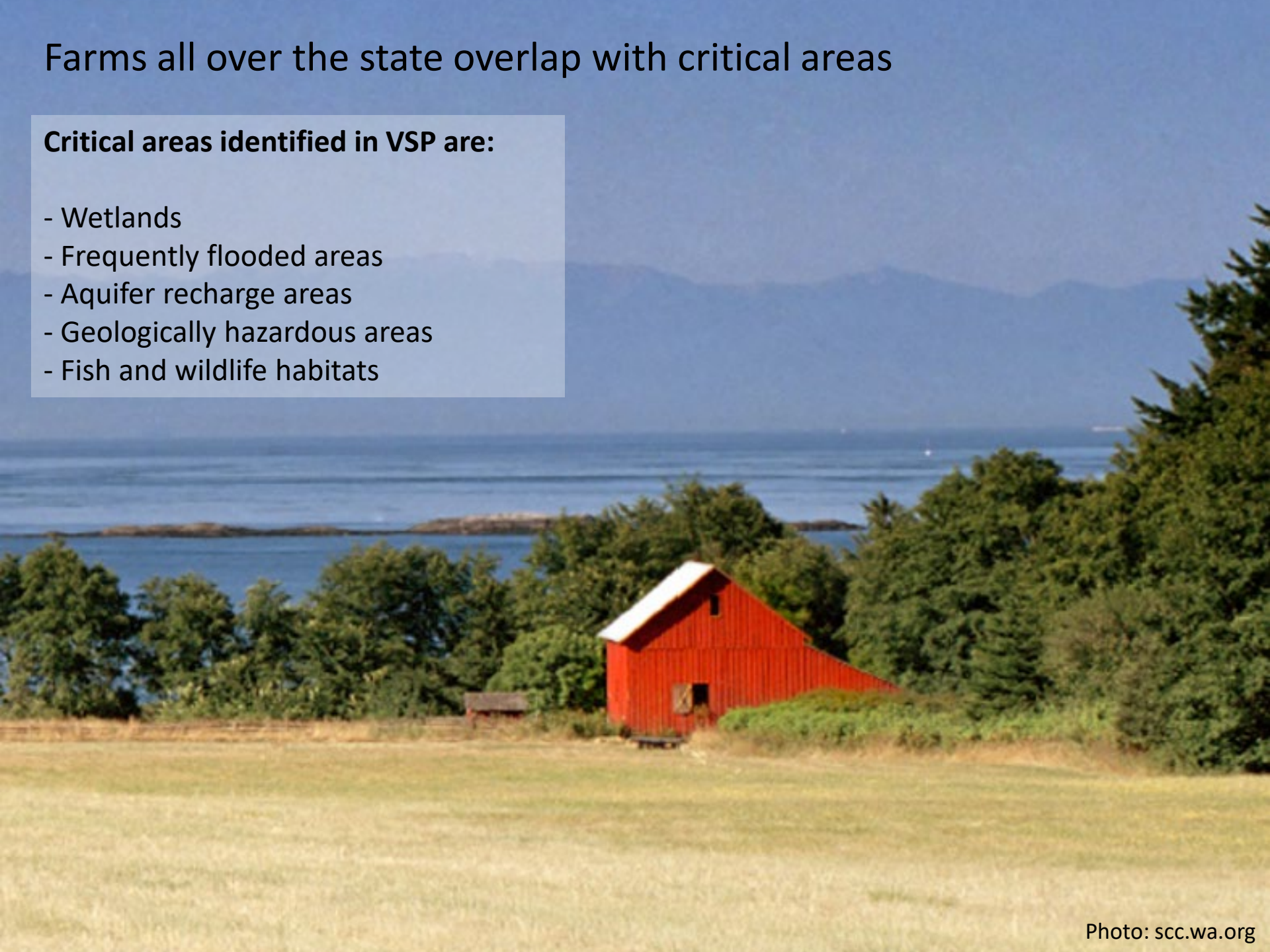
westernlaw.org

Promote critical area protection while
improving agricultural viability

Farms all over the state overlap with critical areas

Critical areas identified in VSP are:

- Wetlands
- Frequently flooded areas
- Aquifer recharge areas
- Geologically hazardous areas
- Fish and wildlife habitats



A voluntary approach supporting agriculture and natural resources

Prior to 2011, the main tool for counties to ensure protection of critical areas on agricultural land was regulation.

VSP was created in 2011 to give counties the option to use locally driven watershed plans and voluntary, incentive-based tools to protect critical areas.

What does VSP mean for you?

If you're a farm landowner in a VSP county, the program can be a big help in your operation:

VSP is voluntary and non-regulatory. You can choose whether to do a stewardship plan for your farm.

If you choose to do a stewardship plan, you will balance protecting the critical area with keeping your agricultural operation economically viable... so it works for you!

Funding will be available to help you put in practices that protect critical areas, such as fences or improved pastures and paddocks.

Examples of riparian area projects/improvements





Getting Involved

If you live in one of the 27 counties that are enrolled in VSP, there may be opportunities for you to receive on-site, expert assistance with developing a Stewardship Plan for your property and paying for new or adjusted land management practices that protect critical areas.



VSP Resources

Washington State Conservation
Commission web page

<https://www.scc.wa.gov/vsp>

Contact your local Conservation
District



Chelsea Benner
VSP Coordinator
Department of Ecology
Chelsea.benner@ecy.wa.gov
509-571-4155