



# Recreation and Conservation Office (RCO)

Presented By: Kim Sellers



WASHINGTON STATE  
Recreation and Conservation  
Funding Board

# RCO Sections

## Salmon Recovery

Provide Grants To:

- Fund the best possible salmon recovery activities

Work with Salmon RCO grants manager to scope projects

## Recreation and Conservation

Provide Grants To:

- Protect, restore, and develop habitat and recreation opportunities

**APPLY NOW! Applications Due May 3**





# Recreation and Conservation Grants - Riparian

---

## Washington Wildlife and Recreation Program (WWRP) Riparian Protection

### Purpose:

Conserve land along the water, as well as submerged land such as streambeds, which can provide functional habitat for salmon and other wildlife.

## Aquatic Lands Enhancement Account (ALEA)

### Purpose:

1. Protection and Enhancement: to improve or protect aquatic lands for public purposes
2. Public Access: to provide and improve public access to aquatic lands.



# Riparian Protection Vs. ALEA Grants

---

## Riparian Protection

Requires:

- MUST include acquisition of property rights
- Allows for restoration
- Preference for public access, but can restrict if necessary
- Requires a comprehensive plan on file with RCO

## ALEA

Requires:

- MUST occur directly adjacent to Navigable Waters
- Allows for restoration
- Requires some form of public access
- Does not require a comprehensive plan



# Riparian Protection Vs. ALEA Grants

---

## Riparian Protection

### Eligible Applicants:

- Local Governments
- Tribes
- Salmon Recovery Lead Entities
- Nonprofit Nature Conservancies
- State agencies: No match required

## ALEA

### Eligible Applicants:

- Local Governments
- Tribes
- Special Purpose Districts
- State Agencies

### Not Eligible:

- Nonprofit organizations
- Salmon Recovery Lead Entities



# Riparian Protection Vs. ALEA Grants

---

## Riparian Protection

Funding: No Limit  
Must include 10% of total project cost from a non-state/ non-federal source

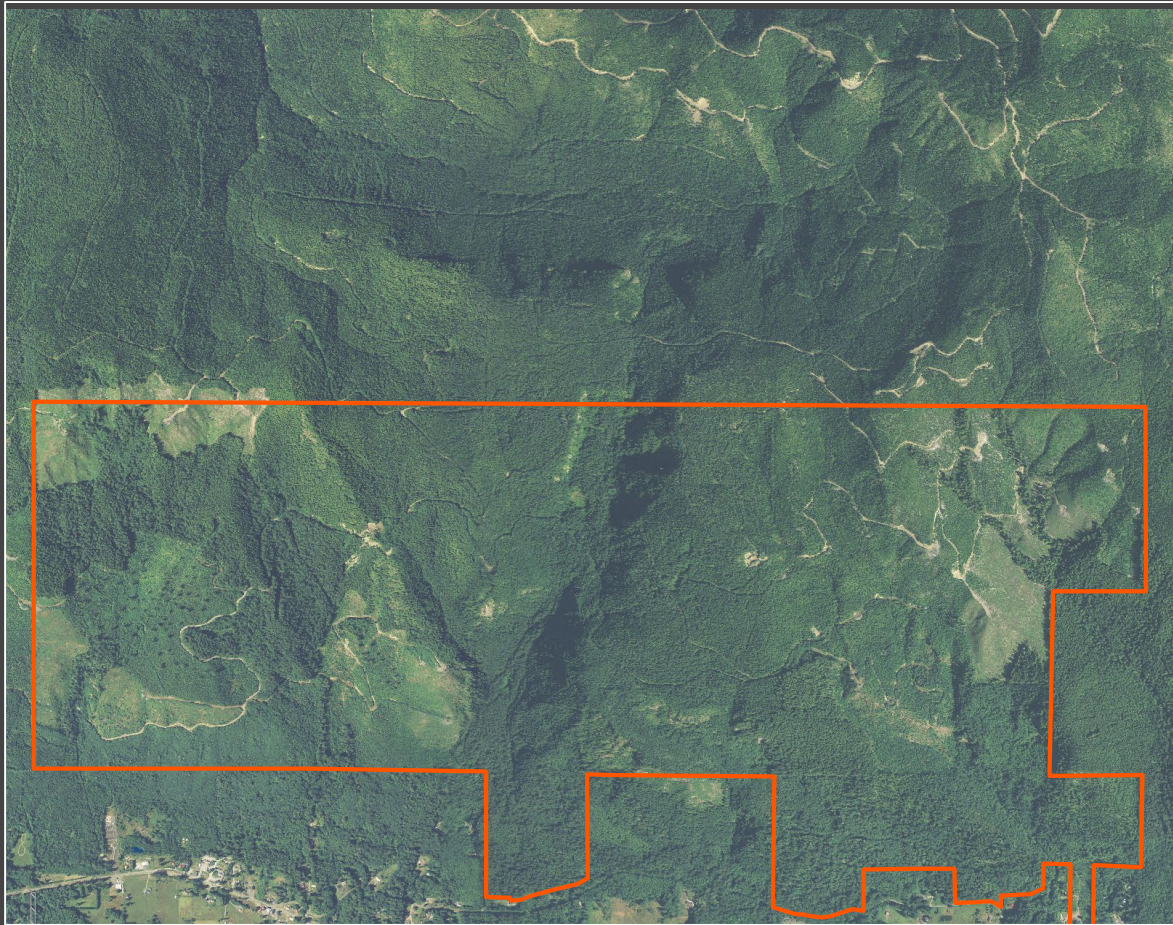
## ALEA

Funding: Acquisition - \$1 Million  
Restoration - \$500,000  
Combination - \$1 Million



# Differences:

## Riparian Protection



Busy Wild Creek- Nisqually Land Trust

## ALEA



Little Skookum Estuary – City of Bellingham

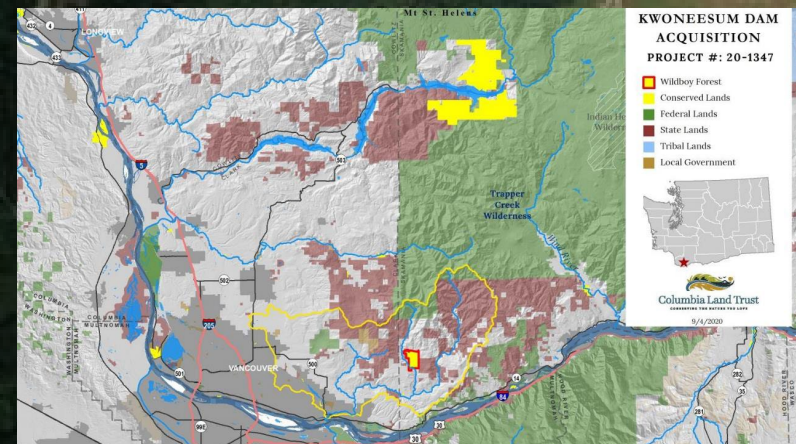


# Examples





# Riparian Protection Example: Wildboy Forest and Kwoneesum Dam Acquisition



Columbia Land Trust

CONSERVING THE NATURE YOU LOVE



# Riparian Protection Example: Wildboy Forest and Kwoneesum Dam Acquisition

## Funding:

- Riparian Protection
- Salmon State Projects
- Sponsor Match





# Riparian Protection Example: Skookum Valley Acquisition

New Meandered Channel and Wetland Restoration

Reller Acquisition

Wetland and Riparian Restoration

Skookum Creek

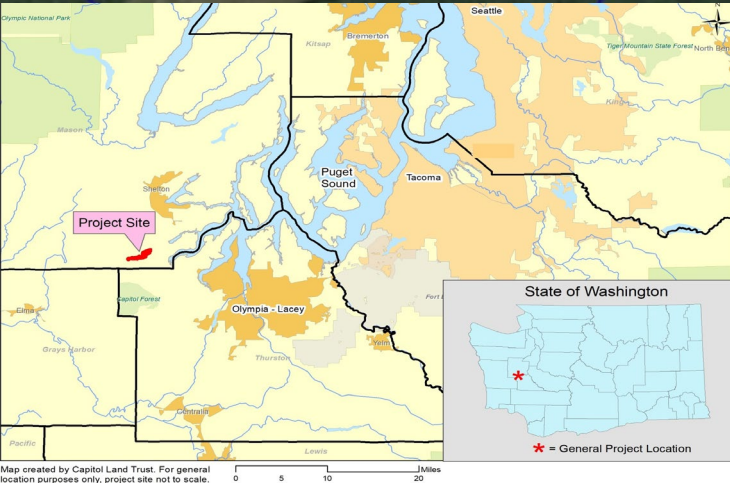
Floodplain Reconnection by Installing Bridge Creating Channel

Cold Water Trib

SR 108

McDonald Creek: Channel Restoration  
Remove Fishway, Create Meander Channel  
with Floodplain. LWD and Riparian Placement.

Squaxin Island Tribe and  
Capitol Land Trust





# Riparian Protection Example: Skookum Valley Acquisition

An aerial photograph showing a river winding through a lush green valley. The river is the central focus, flowing from the upper right towards the lower left. The surrounding land is covered in vibrant green grass and some scattered trees. In the foreground, a wire fence runs across the lower part of the frame, partially enclosing a field. The overall scene depicts a natural, protected riparian area.

## Funding:

- Riparian Protection
- Salmon State Projects
- Puget Sound Acquisition and Restoration
- Sponsor Match

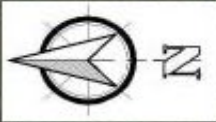
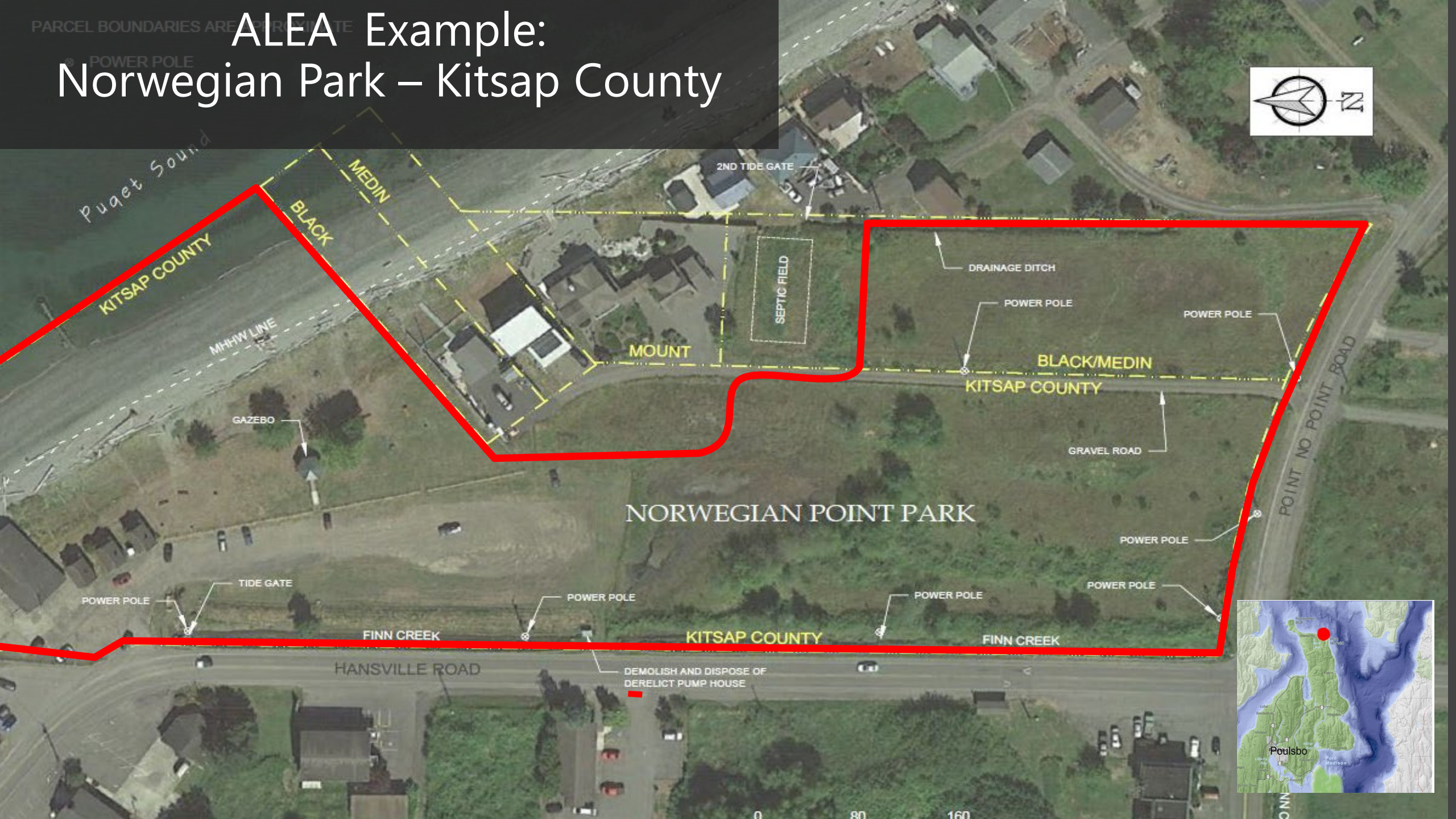


# ALEA Examples

Poulsbo Fish Park – City of Poulsbo



# ALEA Example: Norwegian Park – Kitsap County



PARCEL BOUNDARIES ARE PRIVATE

POWER POLE

Puget Sound  
KITSAP COUNTY

MHHW LINE

BLACK  
MEDIN

2ND TIDE GATE

SEPTIC FIELD

MOUNT

DRAINAGE DITCH

POWER POLE

POWER POLE

BLACK/MEDIN  
KITSAP COUNTY

GRAVEL ROAD

POINT NO POINT ROAD

NORWEGIAN POINT PARK

POWER POLE

POWER POLE

TIDE GATE

POWER POLE

POWER POLE

POWER POLE

FINN CREEK

KITSAP COUNTY

FINN CREEK

HANSVILLE ROAD

DEMOLISH AND DISPOSE OF  
DERELICT PUMP HOUSE

0 80 160

POINT NO POINT ROAD



# ALEA Example: Norwegian Park – Kitsap County

## Funding:

- ALEA
- Puget Sound Acquisition and Restoration
- Sponsor Match





ALEA Example:

Port Gamble Bay - Port Gamble S'Klallam Tribe

Hood Canal

Town of  
Port  
Gamble

Project Site

PGST  
Reservation

Port  
Gamble  
Bay







16 Acres  
Upland

4 acres  
Adjacent Tidelands

Funding:

- ALEA
- Estuary and Salmon Restoration
- Sponsor Match



# Recreation and Conservation Grants Team



Alison



Allison



Ashly



Beth



Brian



Dan



DeAnn



Henry



Jesse



Lan



Karl



Kim





Elizabeth Butler  
(360) 280-6466  
[Elizabeth.butler@rco.wa.gov](mailto:Elizabeth.butler@rco.wa.gov)



Kim Sellers  
(360) 280-6466  
[Kim.sellers@rco.wa.gov](mailto:Kim.sellers@rco.wa.gov)