

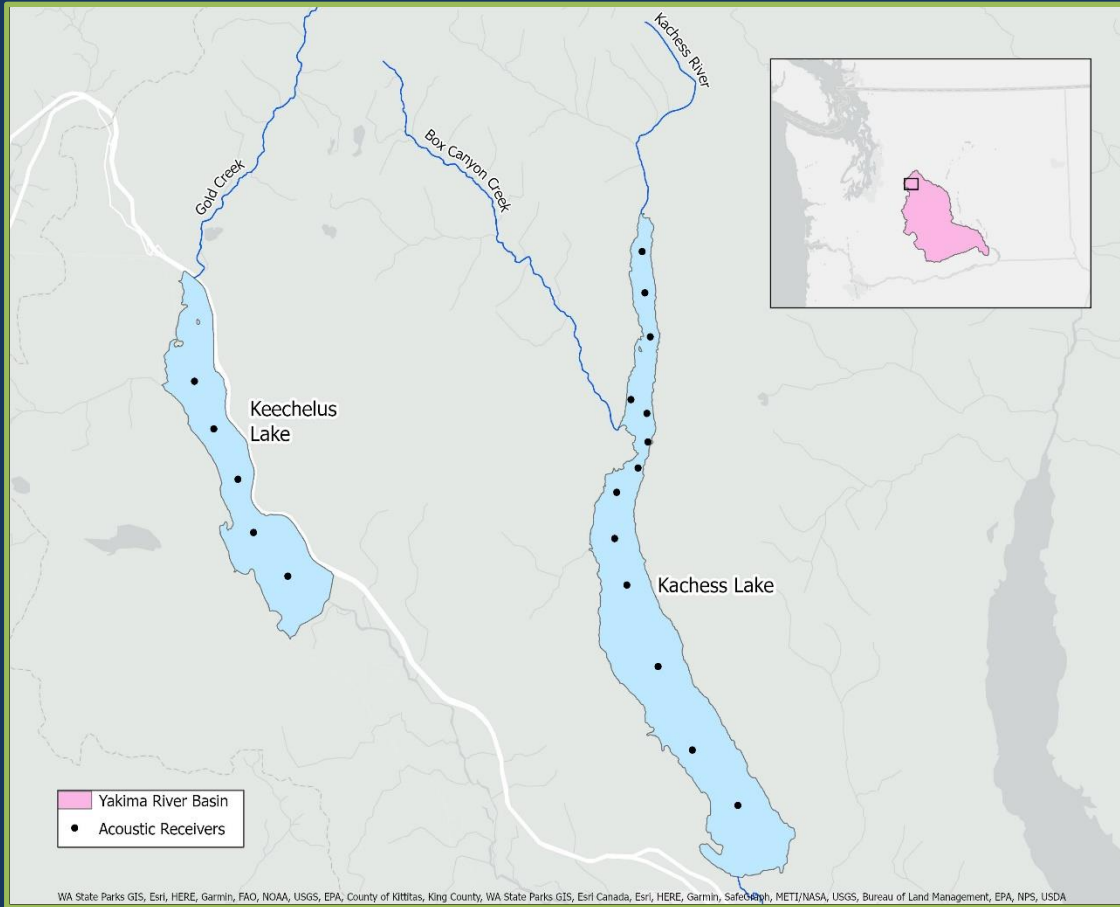


Acoustic Telemetry update



Photo courtesy of Zack Mays YKFP

Kachess and Keechelus





Acoustic tagging

- Evaluate fish movement patterns, habitat use, & survival
 - Juveniles (~230-350 TL mm)
 - Adults (~500-750 mm TL)
- VEMCO v9 & v13 t/p tags & pingers
 - < 2% tag burden
- Tagging populations
 - Box Canyon Creek
 - Kachess River
 - Gold Creek





Juvenile releases





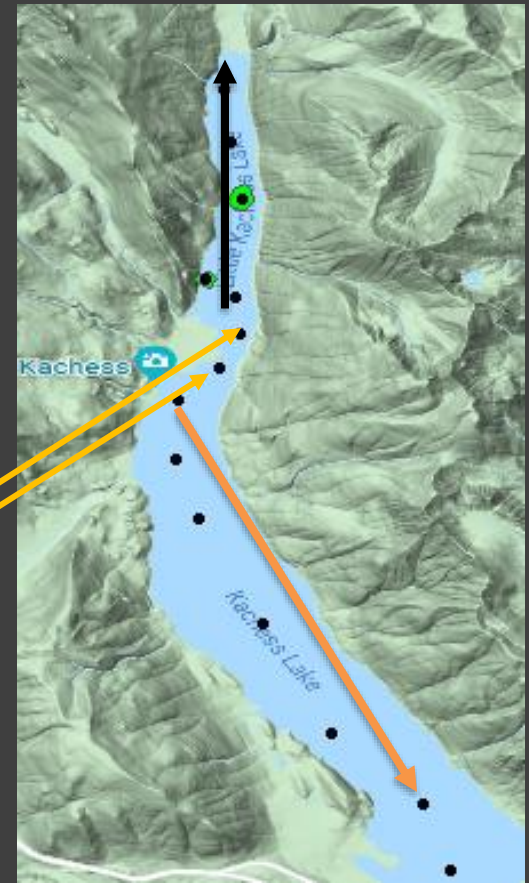
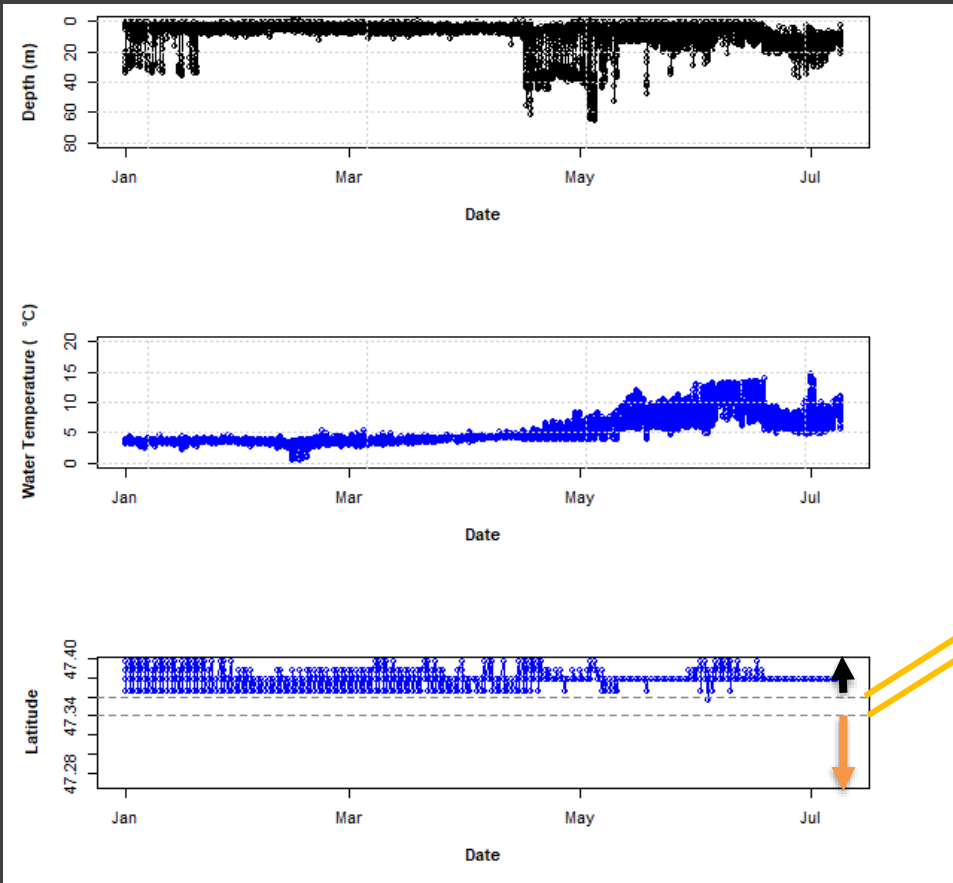
Peekaboo Falls adult tagging



21&22 tagging

Session	Release location	Event year	Tag type	n
Box Canyon Peekaboo	Box Canyon Creek	2021	V13TP-1x-069k-1-0136m	1
Keechelus Dam	Box Canyon Creek	2021	V13TP-1x-069k-1-0136m	1
La Salle-Gold Creek	Gold Creek Bridge	2021	V9-2x-BLU-1	3
La Salle-Gold Creek	Gold Creek Bridge	2021	V9TP-2x-BLU-1	5
La Salle-Kachess River	Kachess River Mouth	2022	V9-2x-BLU-1	15
La Salle-Kachess River	Kachess River Mouth	2022	V9TP-2x-BLU-1	5
Keechelus Dam	Keechelus	2021	V13TP-1x-069k-1-0136m	1
Keechelus Dam	Keechelus	2021	V9TP-2x-BLU-1	1
Kachess Fyke	Mouth of Kachess River	2021	V9TP-2x-BLU-1	1
La Salle-Kachess River	Mouth of Kachess River	2021	V9-2x-BLU-1	1
La Salle-Kachess River	Mouth of Kachess River	2021	V9TP-2x-BLU-1	14

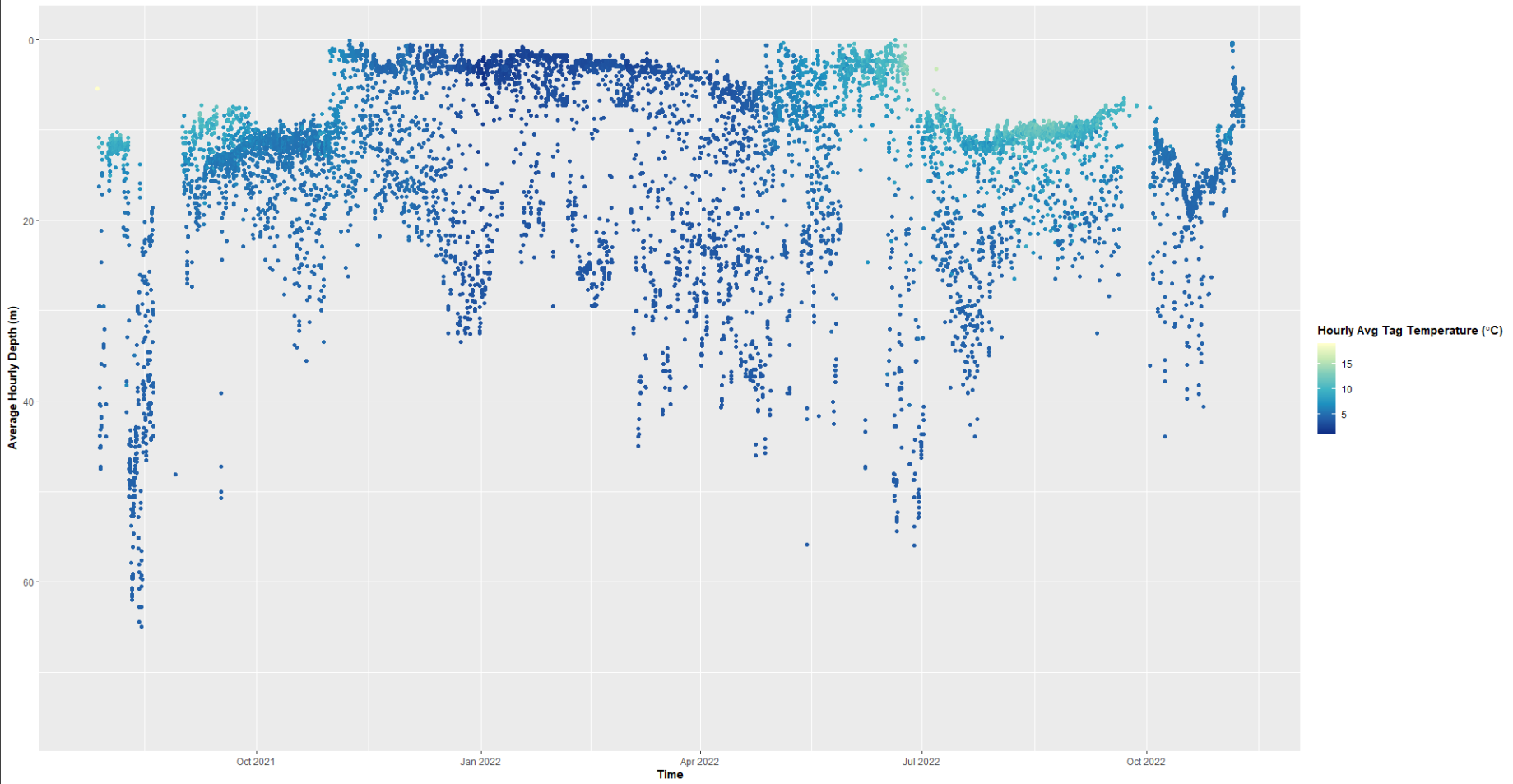




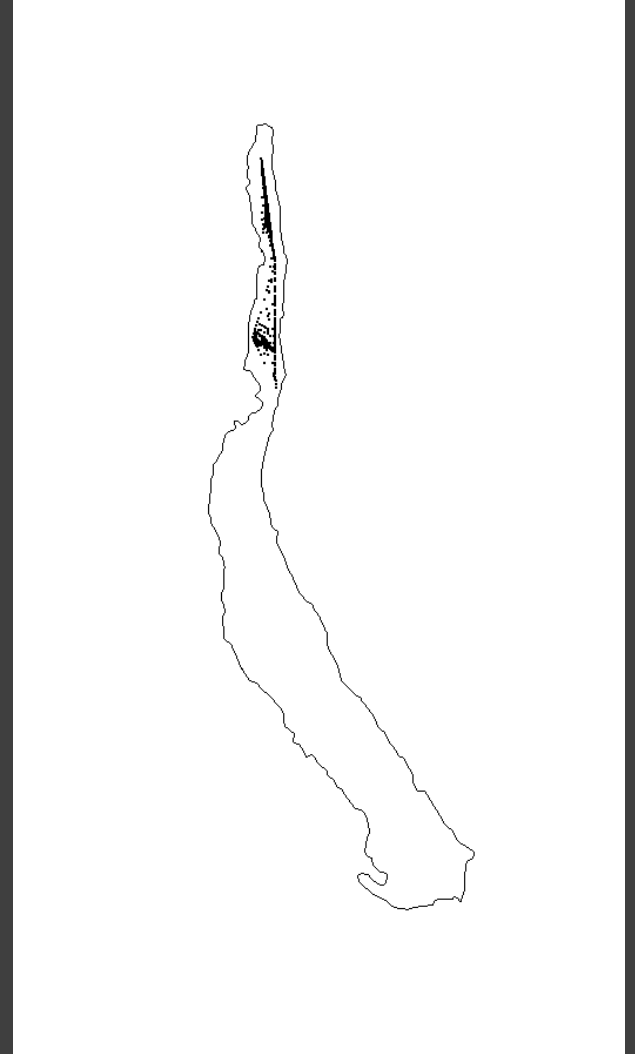
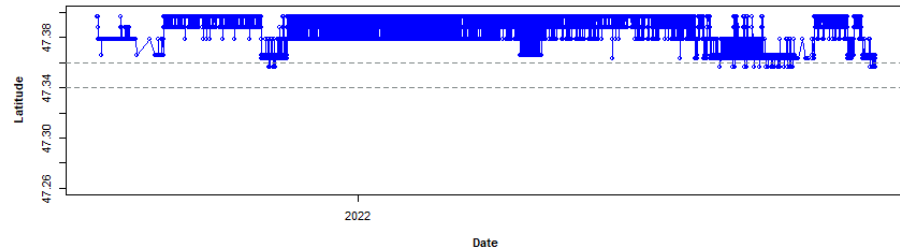
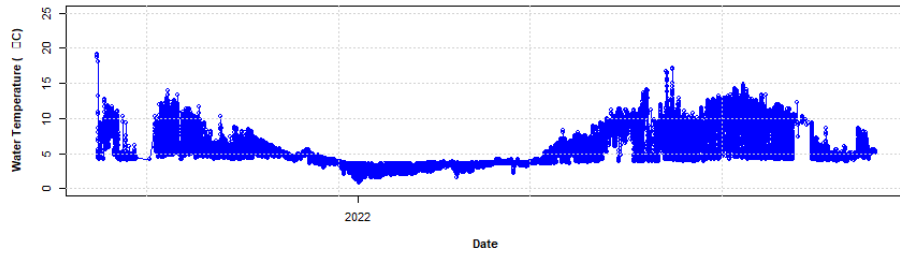
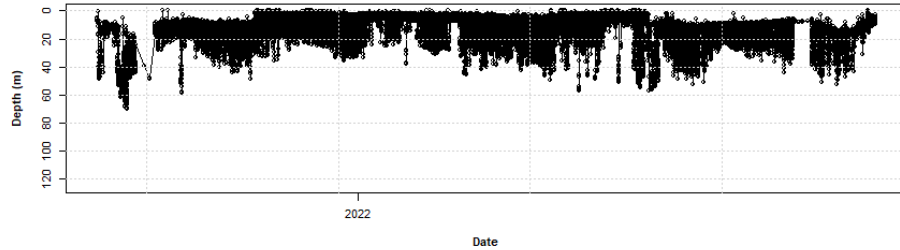
Kachess River juvenile reared Bull Trout



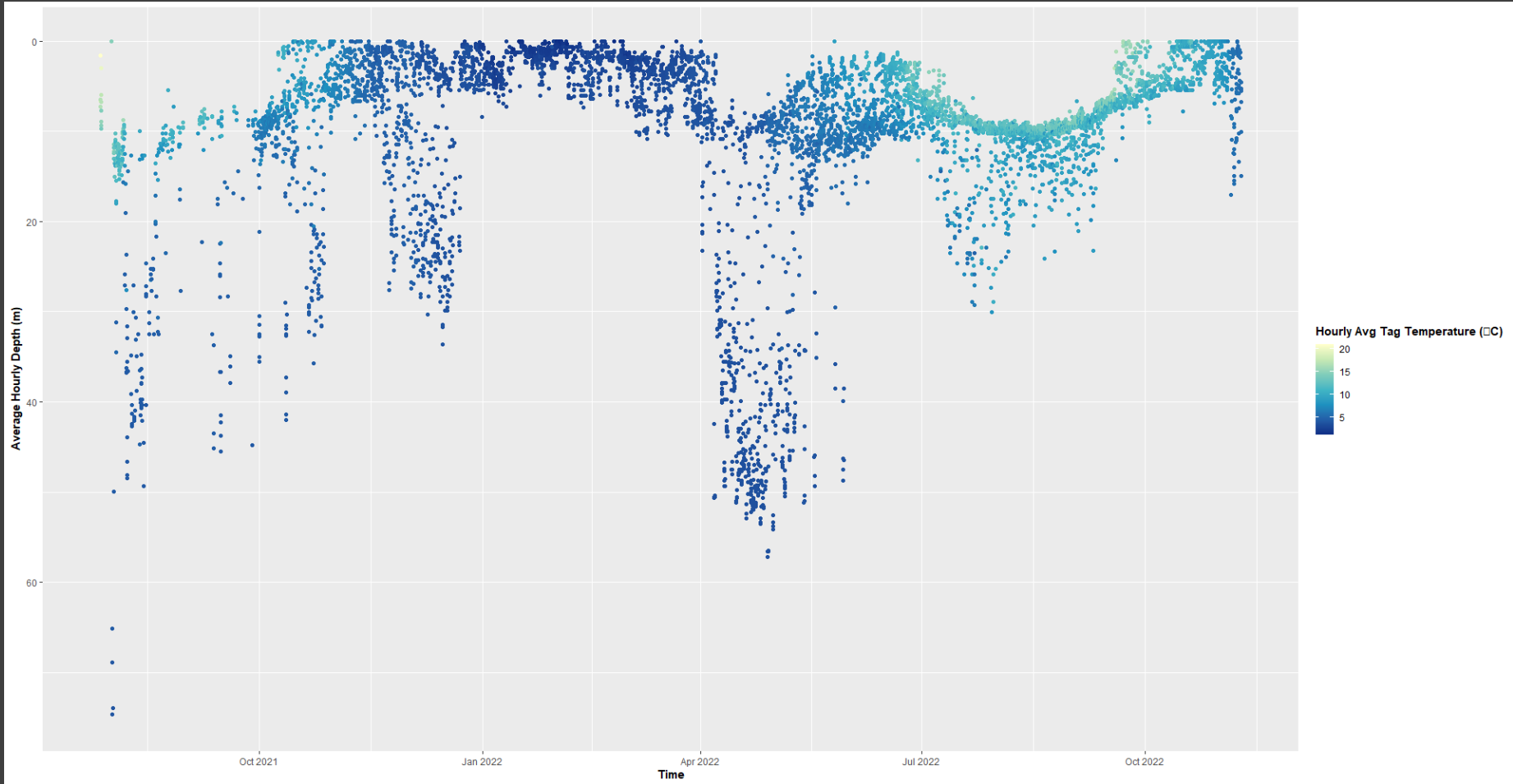
Squirt



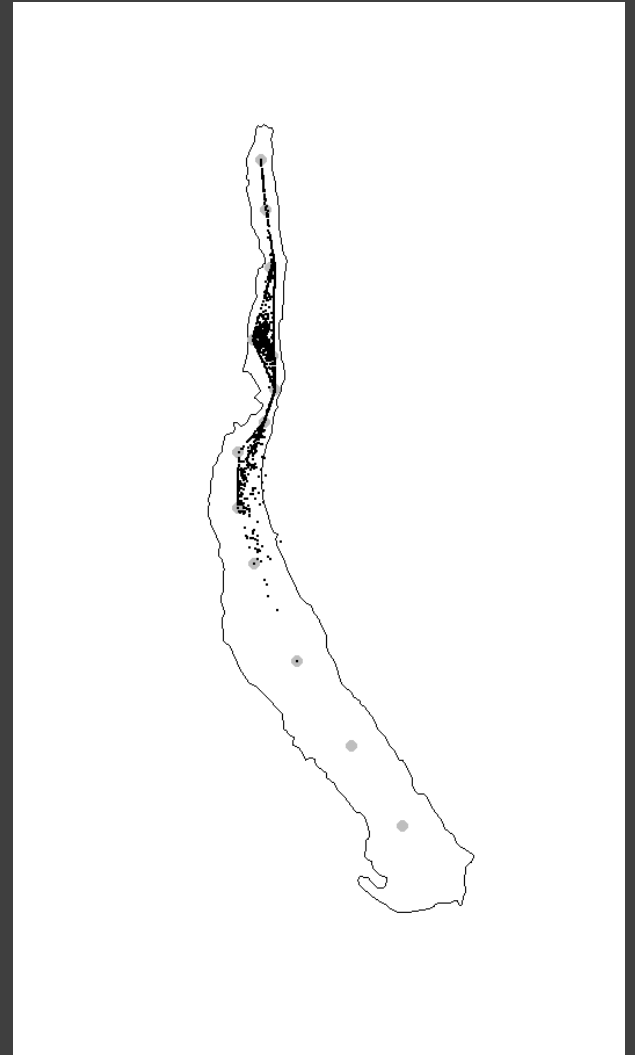
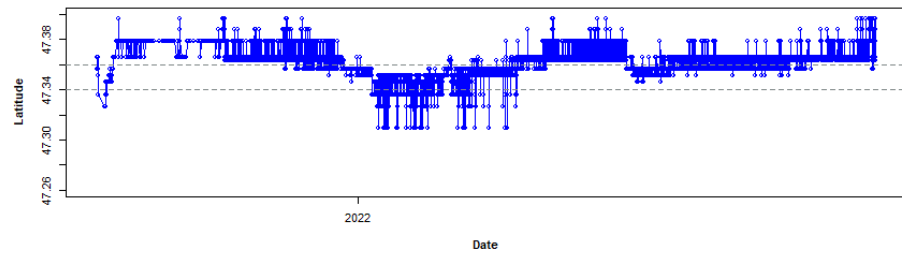
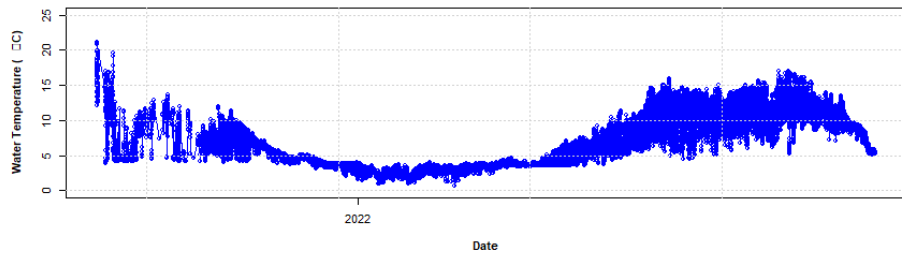
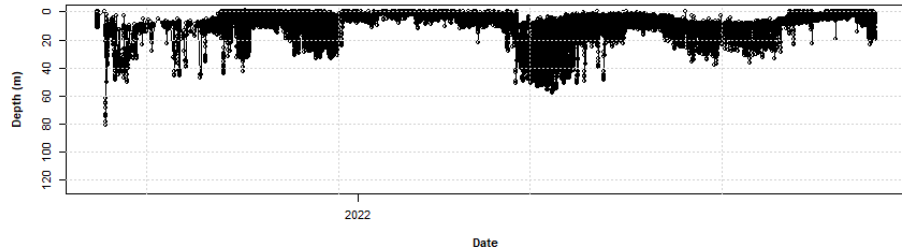
Squirt



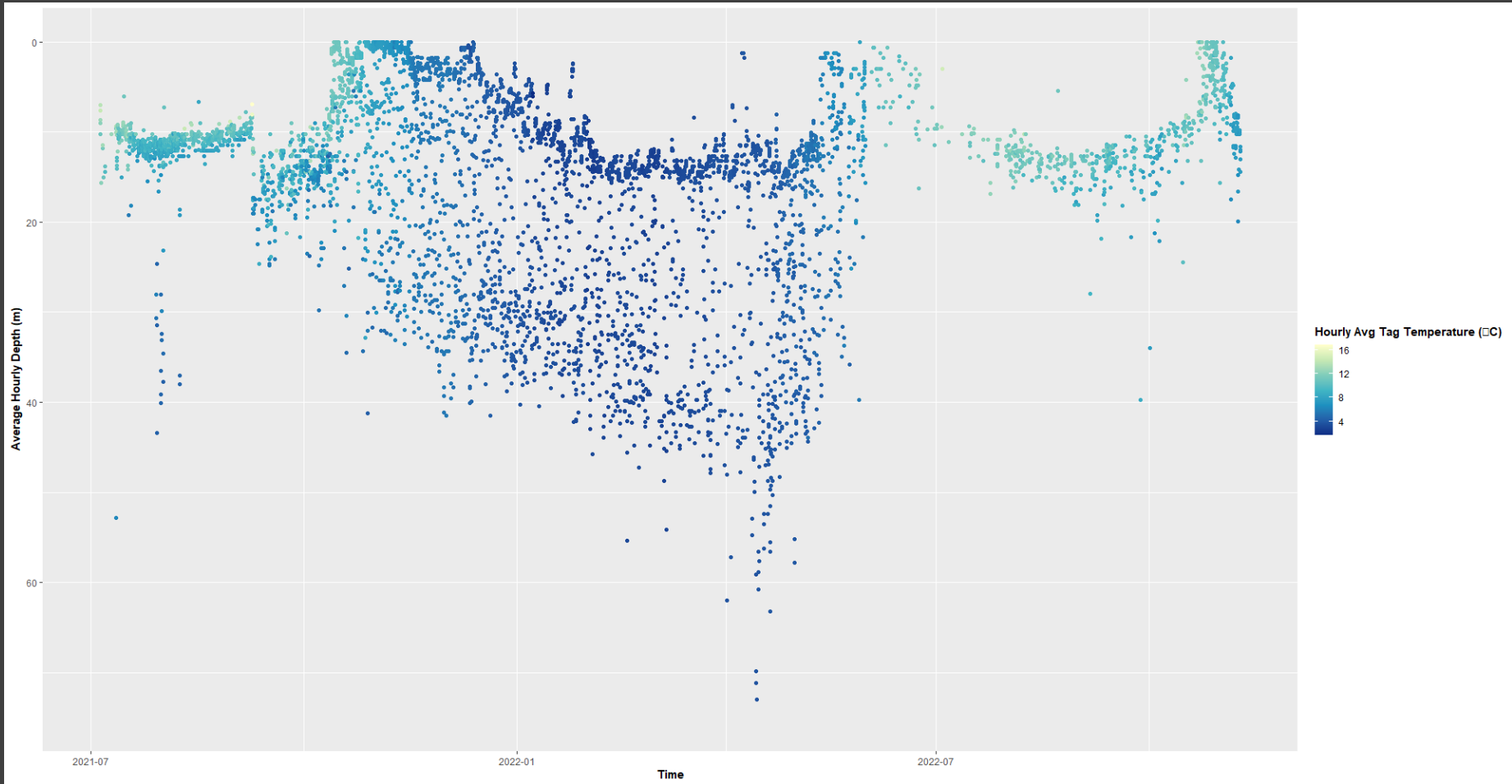
Cousteau



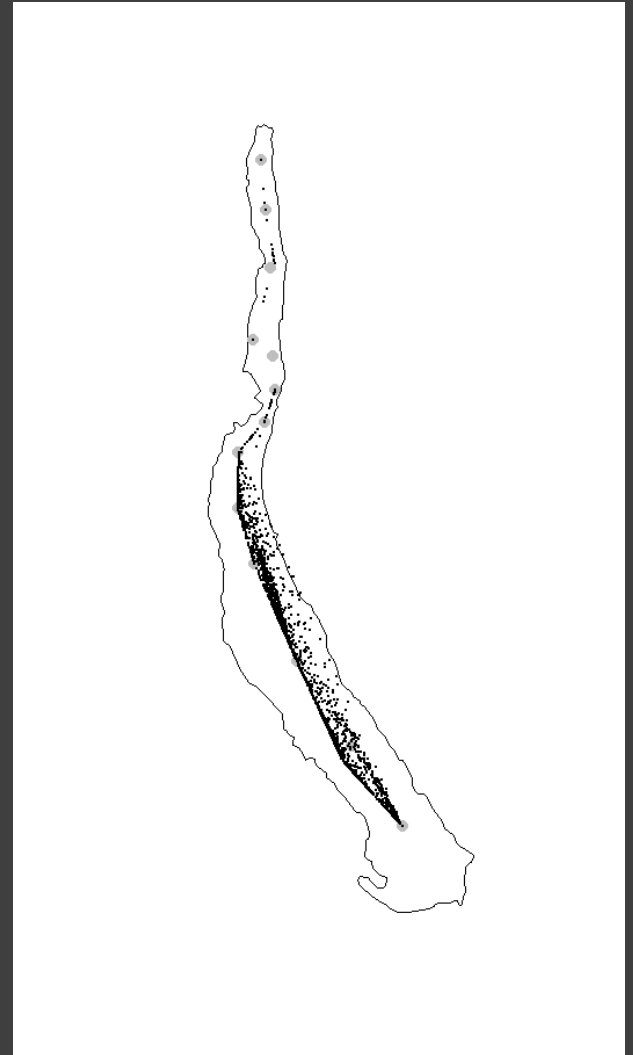
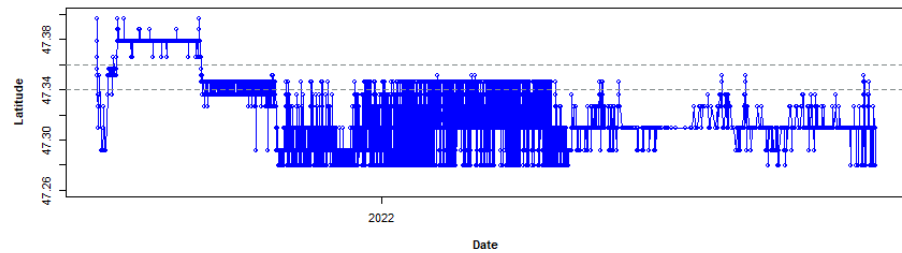
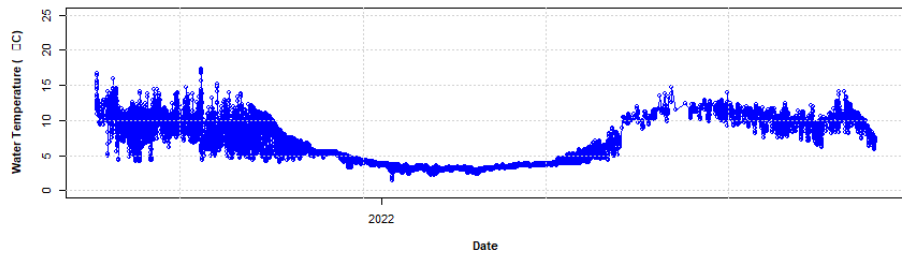
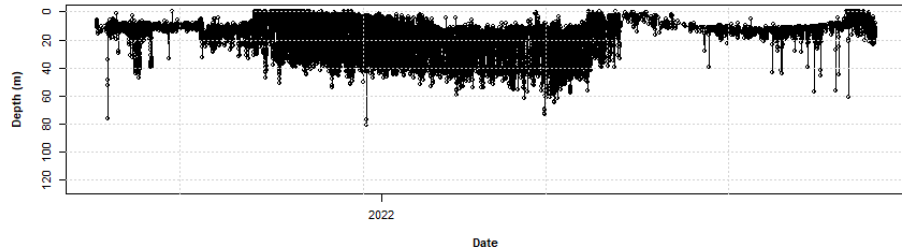
Cousteau



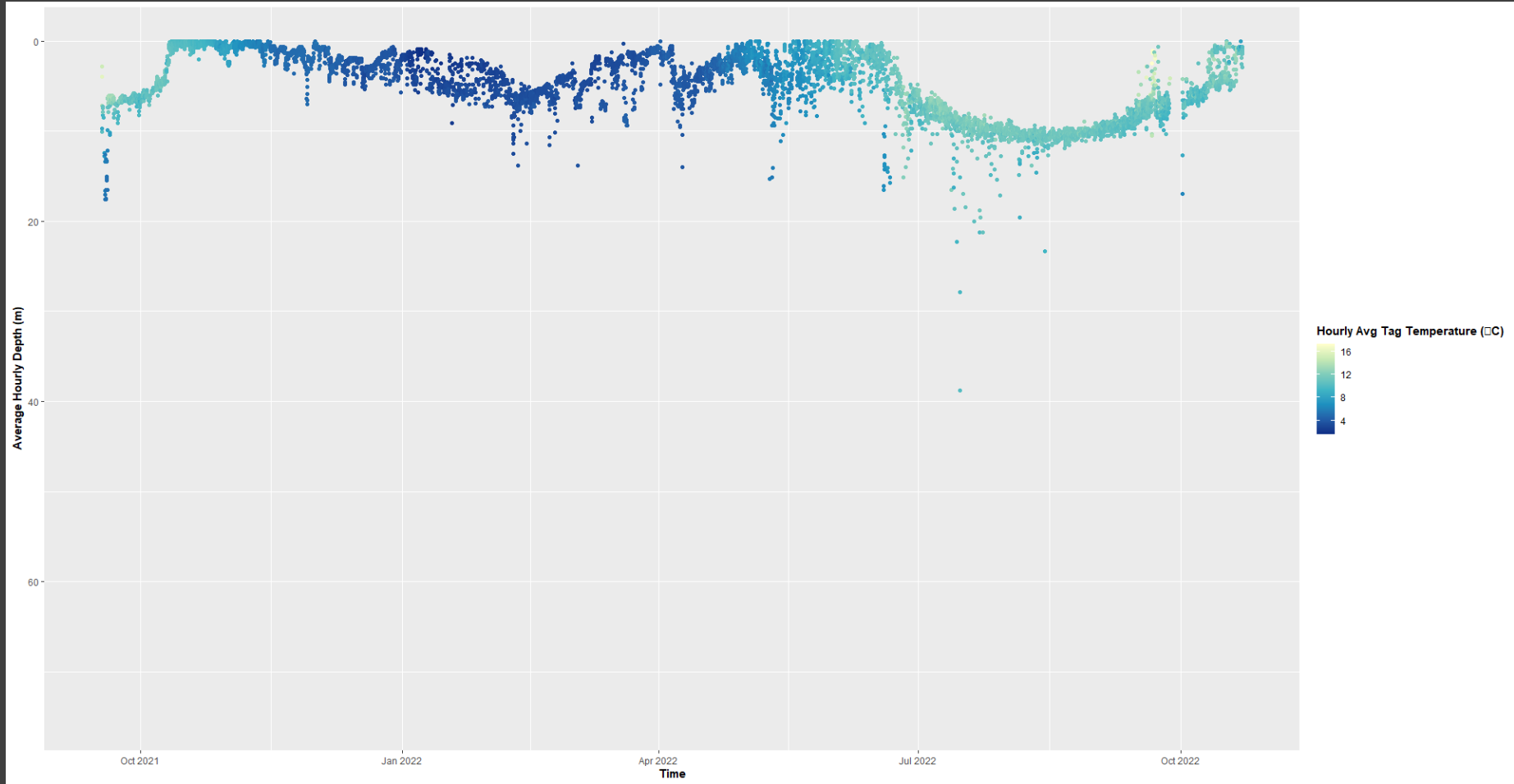
Patches



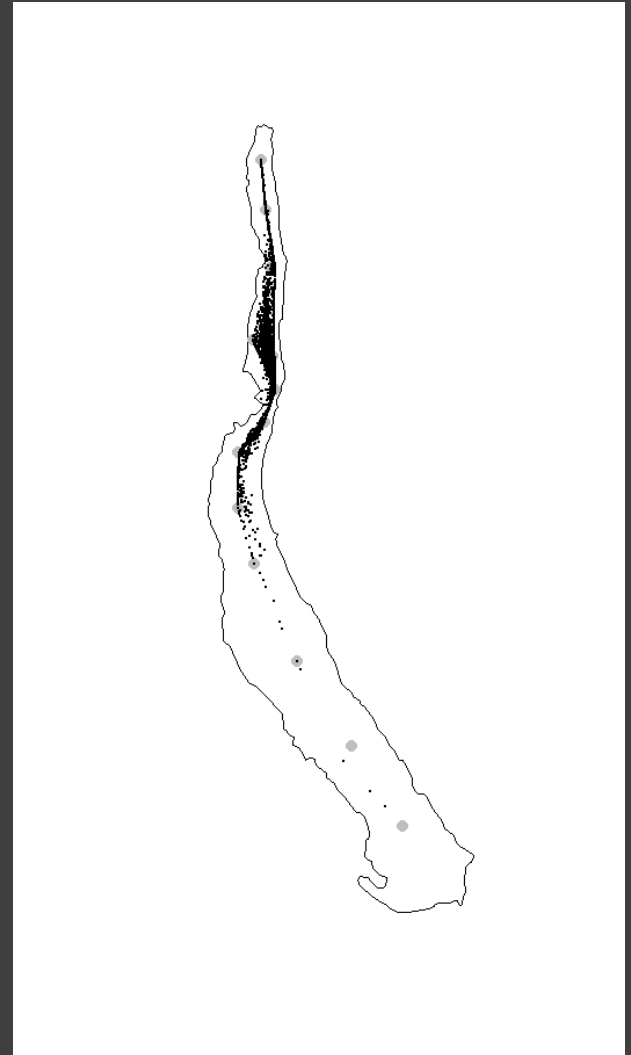
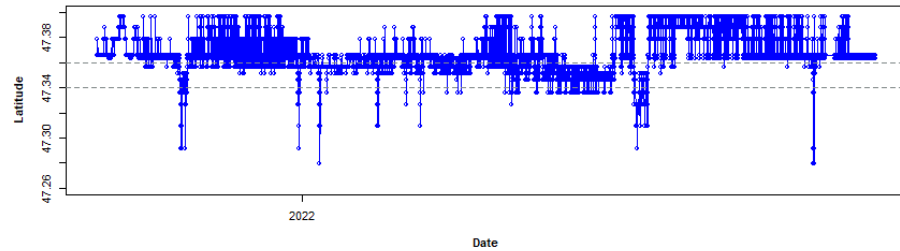
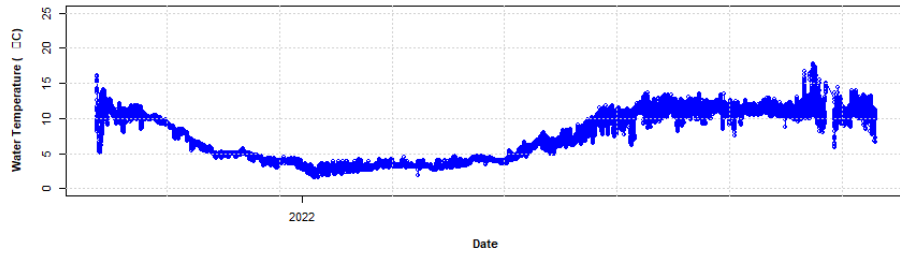
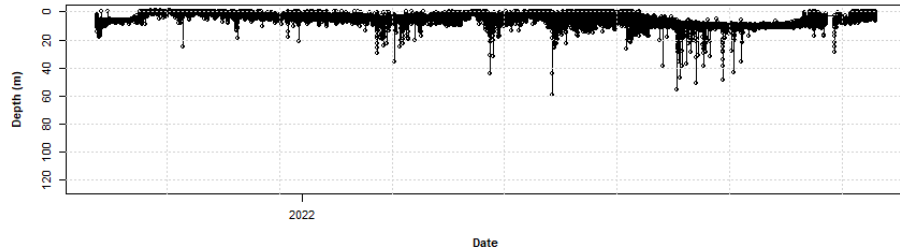
Patches



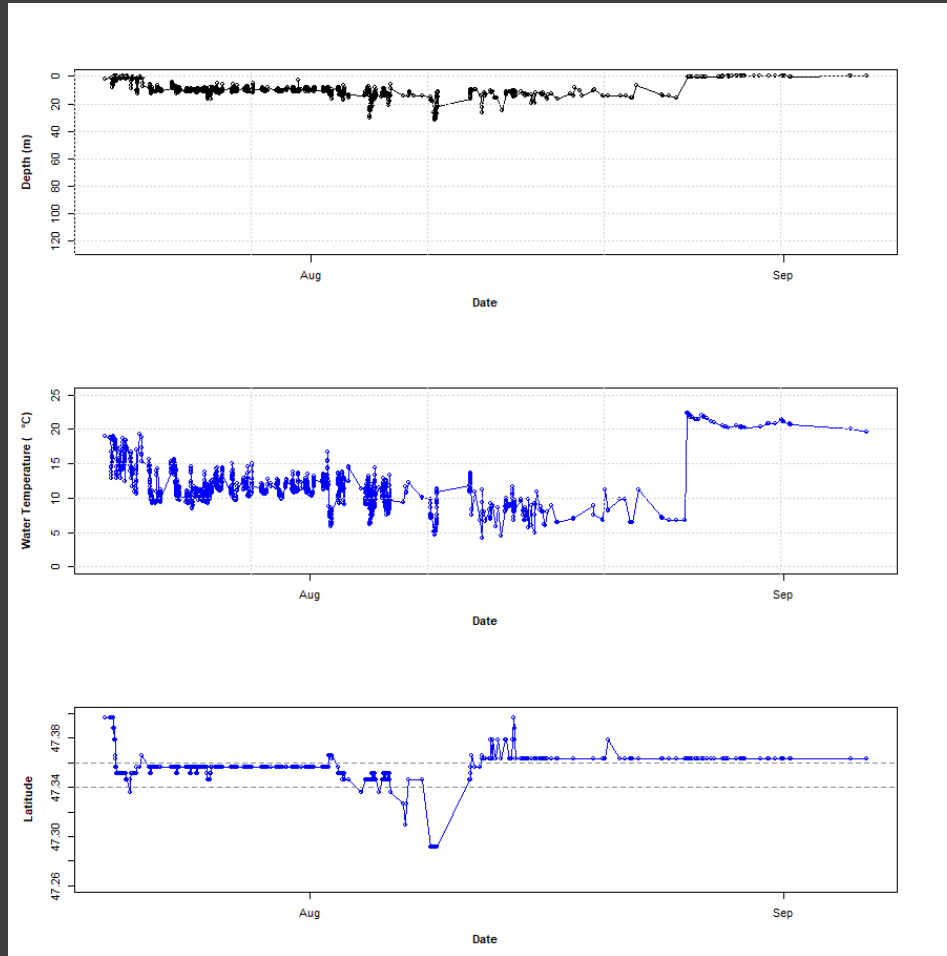
Keechelus T&H fish (Box origin)



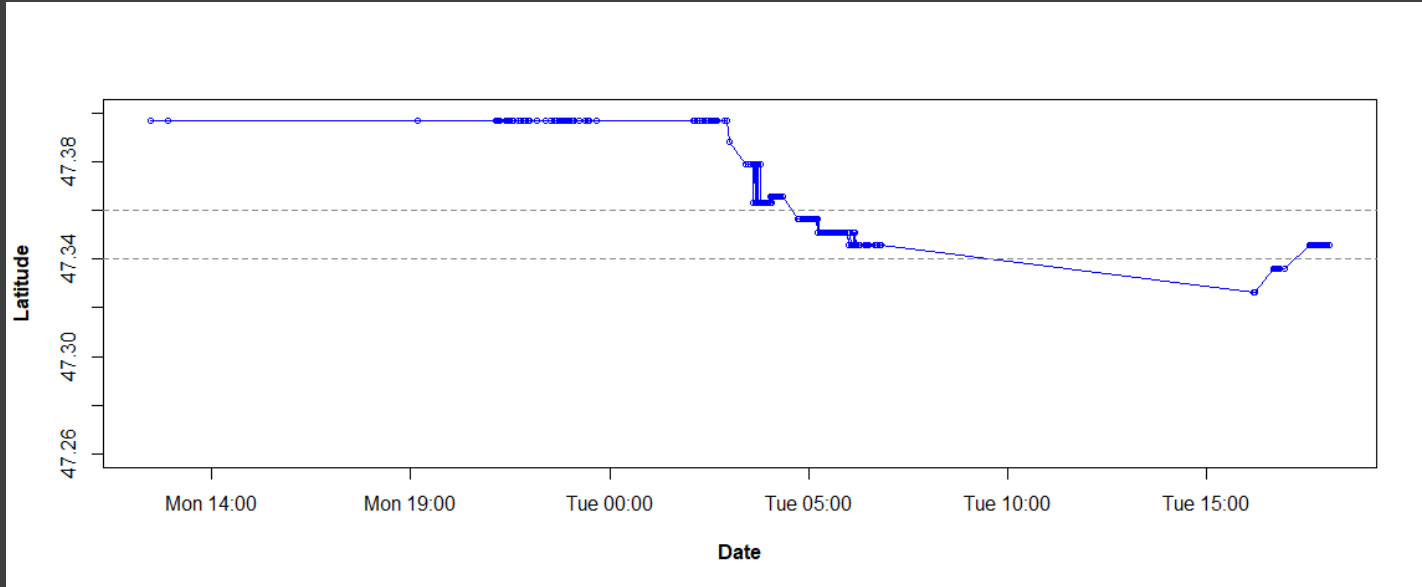
Keechelus T&H fish (Box origin)



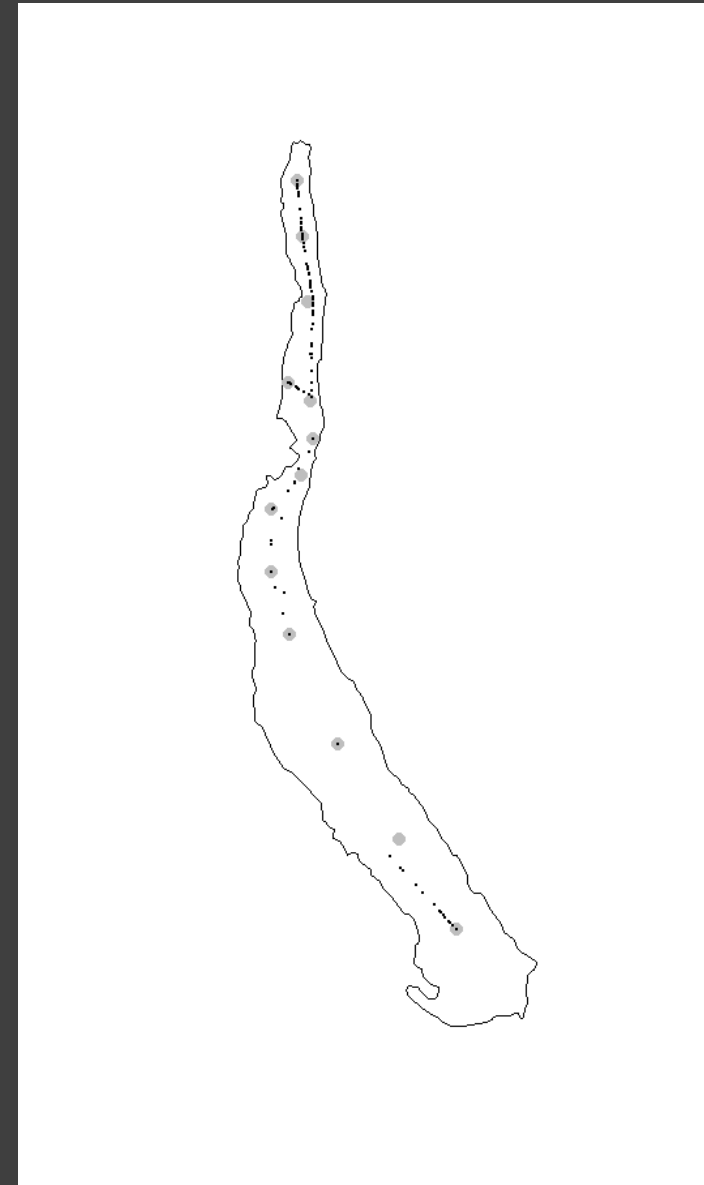
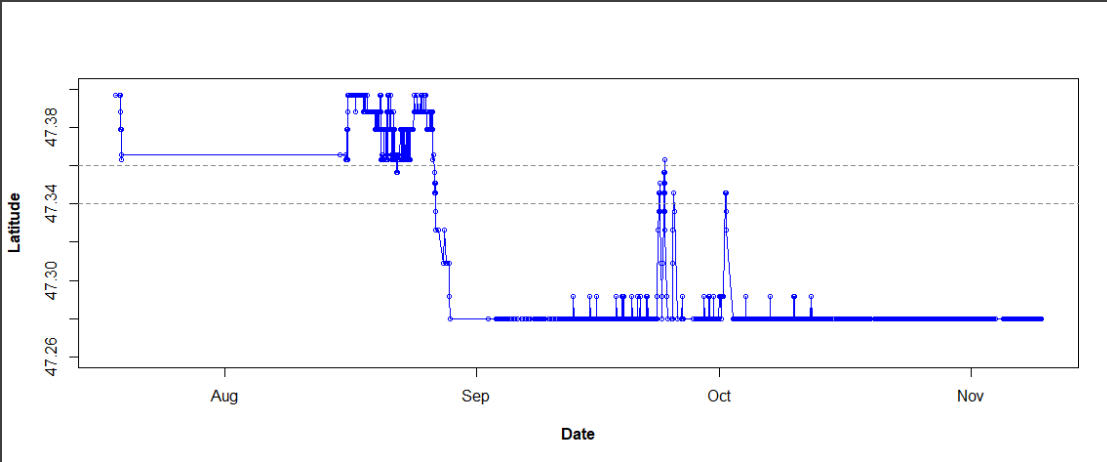
2022 release fish mortality event



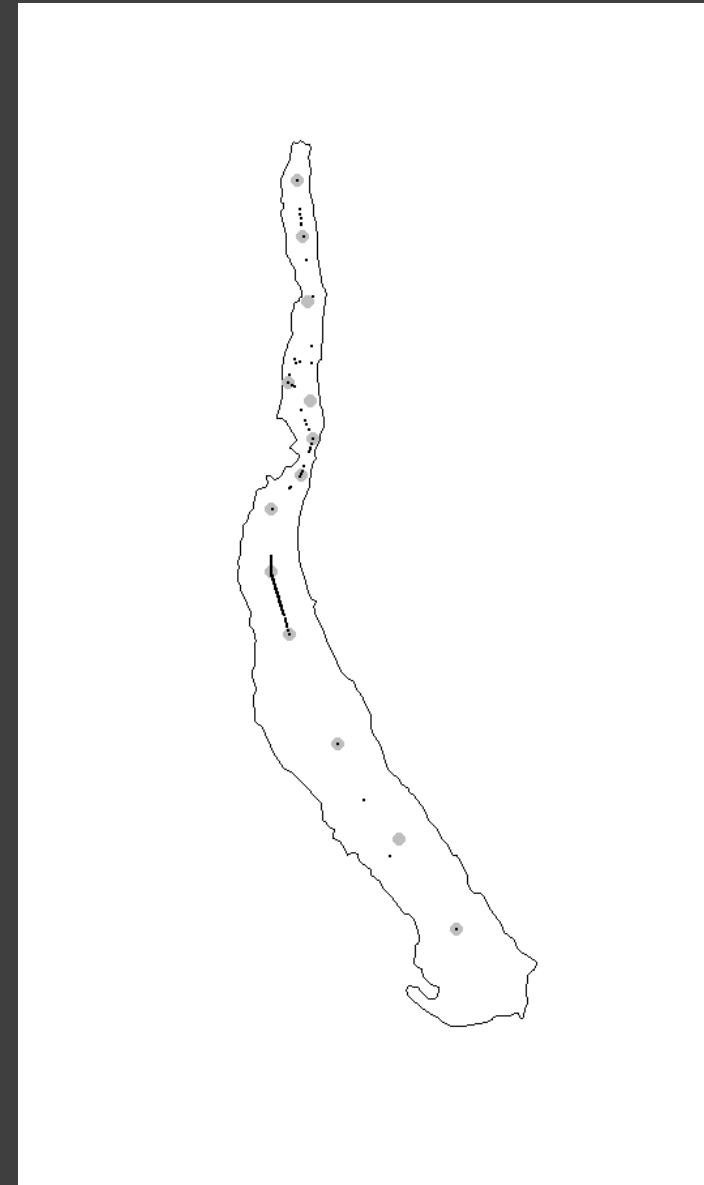
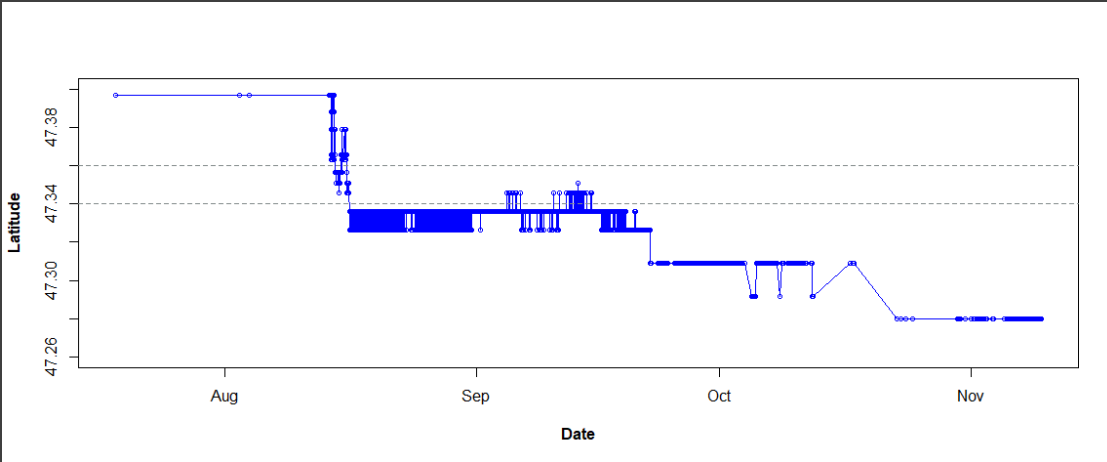
2022 release fish removal



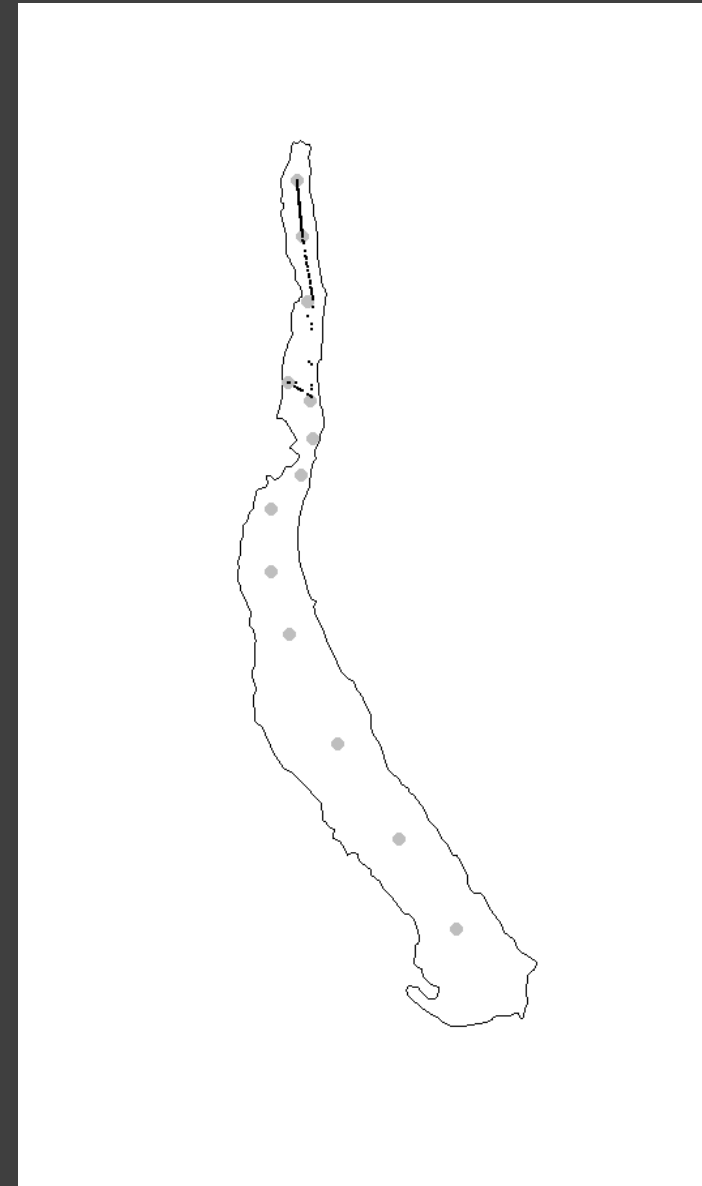
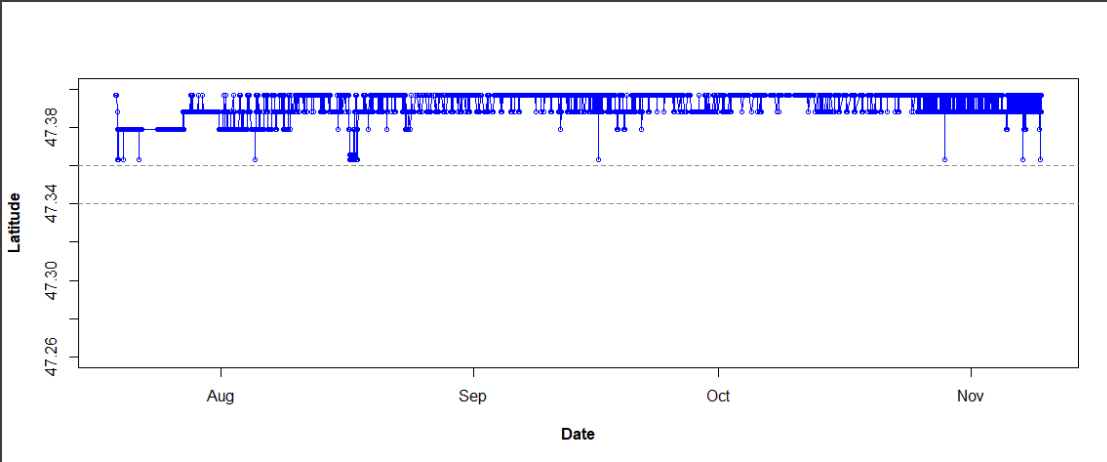
2022 pingers 8259



2022 pingers 8260



2022 pingers 8261



2022 La Salle reared genetics

Date and Time Samples Received: 11-03-22 12:00 AM

Date and Time Results Sent: 11-30-22 9:54 AM

Sample ID	Most Likely Population of Origin	Oncor Probability	Second Most Likely Population of Origin	Oncor Probability
3848-004	Kachess	1.000		
3848-005	Kachess	1.000		
3848-006	Kachess	1.000		
3848-007	Kachess	1.000		
3848-008	Kachess	0.993		
3848-009	Kachess	1.000		
3848-010	Kachess	1.000		
3848-011	Kachess	1.000		
3848-012	Kachess	1.000		
3848-013	Kachess	1.000		
3848-014	Kachess	1.000		
3848-015	Kachess	0.999		
3848-016	Kachess	1.000		
3848-017	Kachess	1.000		
3848-018	BoxCanyon	0.687	Kachess	0.3129
3848-019	Kachess	1.000		
3848-020	Kachess	1.000		
3848-021	Kachess	1.000		
3848-022	BoxCanyon	0.560	Kachess	0.4396
3848-023	Kachess	0.999		
3848-024	Kachess	1.000		
3848-025	Kachess	1.000		

