

A photograph of two hikers walking away on a forest trail, framed by a dark teal border. The hikers are wearing backpacks and are surrounded by tall, thin trees and lush green undergrowth. A fallen log lies across the path ahead of them.

BTTF Season in Review

2025 Edition

Overview

1. Funding sources
2. Crew
3. Temperature loggers
4. Signage
5. Fish rescue
6. Rock dams
7. Demographic survey
8. Outreach
9. Dewatering assessments
10. Redd surveys



2025 Crew

Carlos Reyes, Rene Ibanez,
Dominic Singh, Cece Acosta,
Hannah Campbell, Kaila Akina





Funding Sources

WA Dept. of Ecology (YBIP)

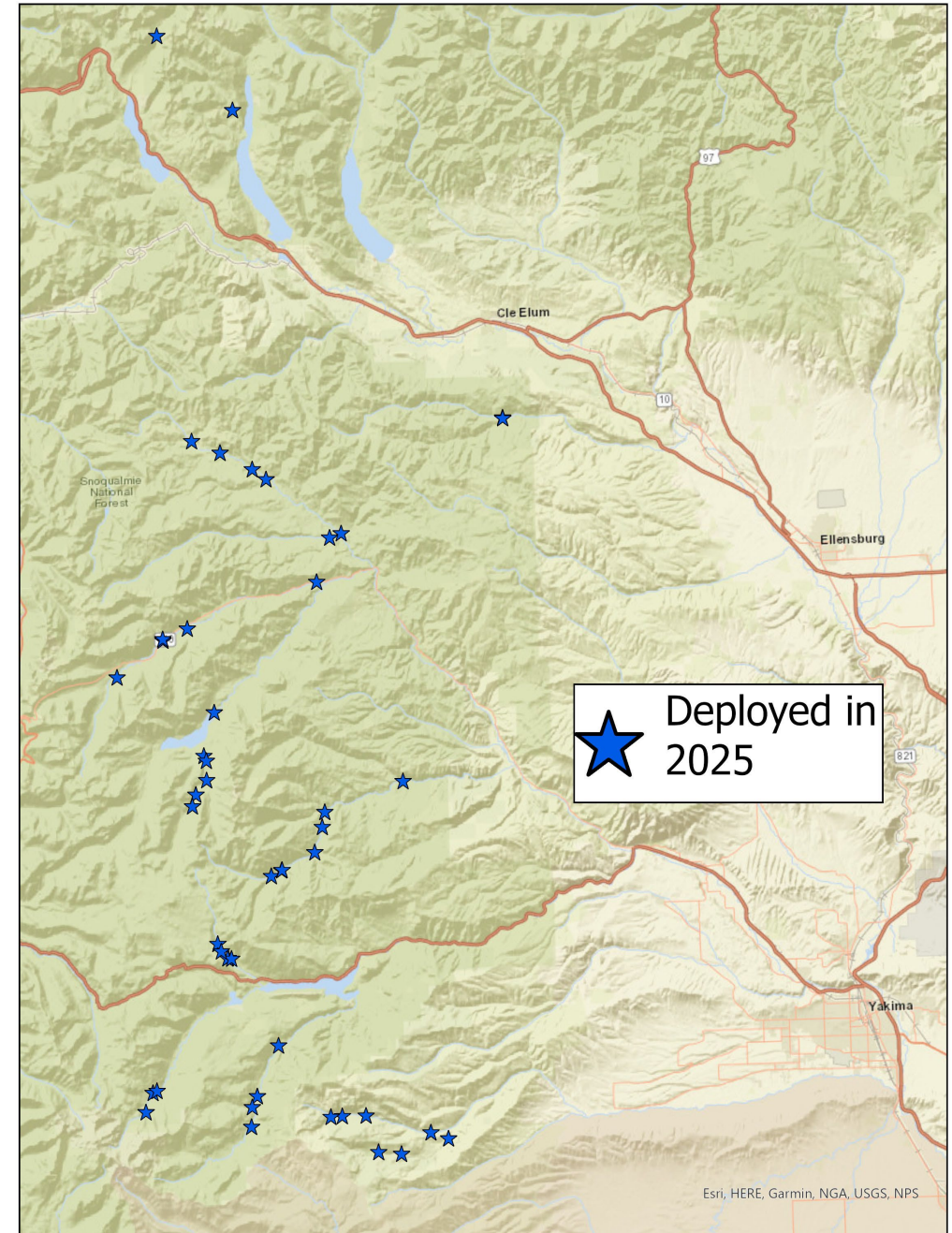
National Forest Foundation

WDFW / DOE Emergency Drought Response



Temperature Loggers

- 47 active loggers
- 2 new sites this year:
 - Bumping River
 - Deep Creek Spring
- 0 loggers lost over 2024-25 winter
- More loggers left over winter this year to complete the data picture




Signage

- 134 new or replacement signs

Release All Bull Trout

What Are Bull Trout?

Bull trout are a native species of char, meaning they have a dark body and light spots. Bull trout require cold, clean water. The presence of bull trout is a sign of a healthy river system. Bull trout are found in cold water lakes and rivers in the Yakima Basin. **Bull trout are federally protected and listed as Threatened under the Endangered Species Act and must be released immediately.**




Bull Trout (Protected)

- Clear dorsal fin with no black markings
- Olive colored body with yellow, cream, or pink spots
- Slightly forked tail

No Black On The Fin, Put It Back In!

Anglers should be aware that non-native brook trout have similar characteristics to bull trout, which are **protected** under the Endangered Species Act and may not be retained. Bull trout do not have black worm-like markings or spots on their dorsal fin, unlike brook trout.

Anglers who catch a bull trout must release the fish unharmed without removing it from the water. Sacrifice your hook and not the fish – please cut your line if the fish swallows the hook.






Brook Trout (Not Native, Not Protected)

- Wavy black markings on the dorsal fin and along the back
- Dark green to brown-colored body with red and yellow spots with a blue halo
- Square tail

Photos taken by William Meyer, WDFW

**LET 'EM PASS!
Rock Dams Block Fish**



Rock dams like these block fish and are illegal. Fish can't move upstream to find cool water, spawn, and feed.

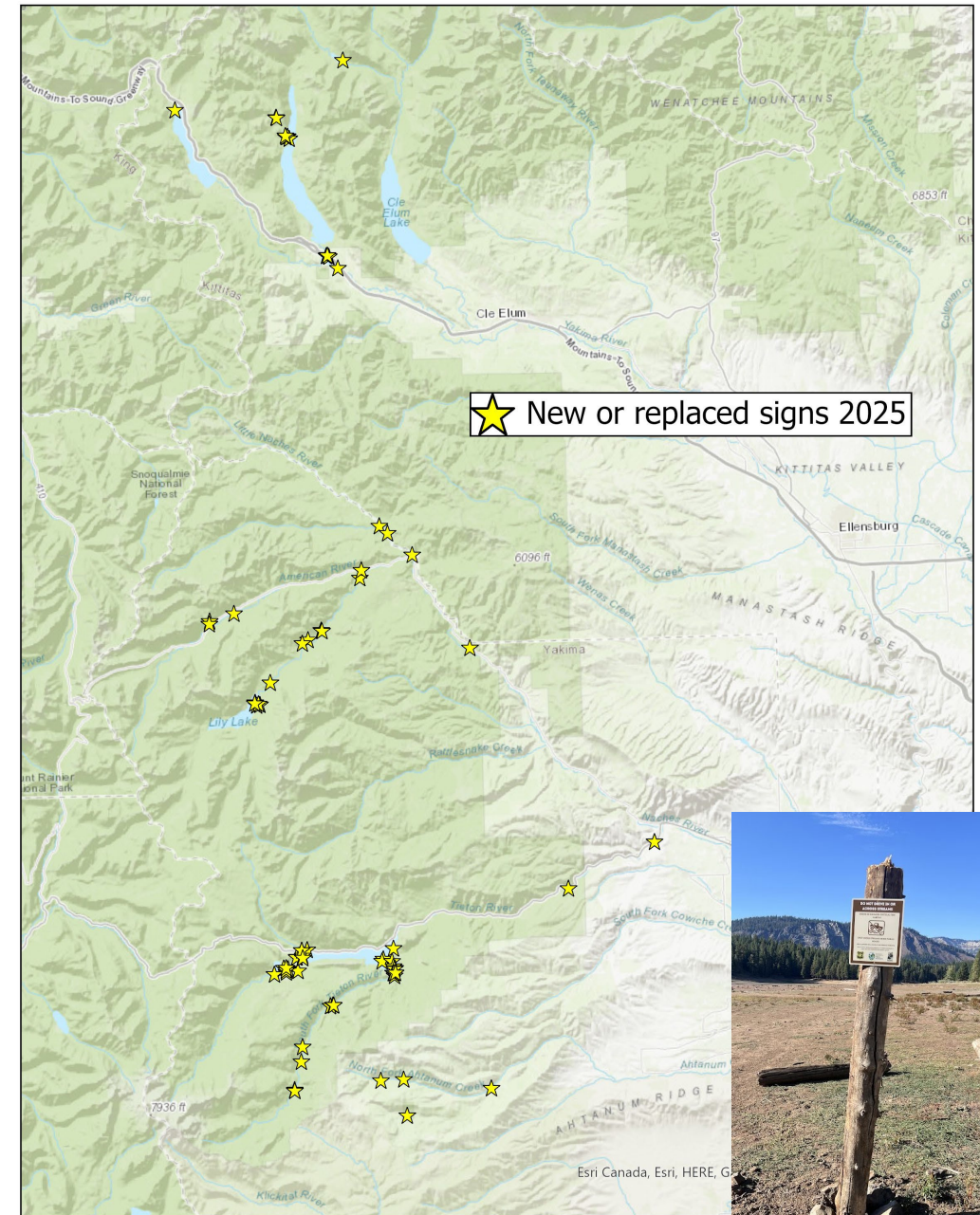
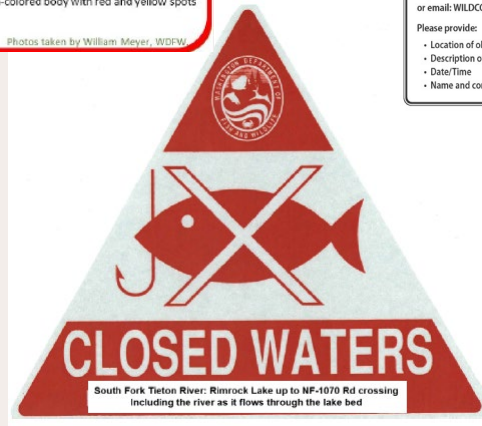
We need your help to maintain good fish habitat! Please be a responsible recreationist and do not leave dams or other structures in the stream.

Report dams to Washington Department of Fish and Wildlife at 1-877-933-9847 or email: WILDCONNM@dfw.wa.gov

Please provide:

- Location of obstruction (lat-long or GPS coordinates are best)
- Description of obstruction (send photo if possible)
- Date/Time
- Name and contact information (optional)

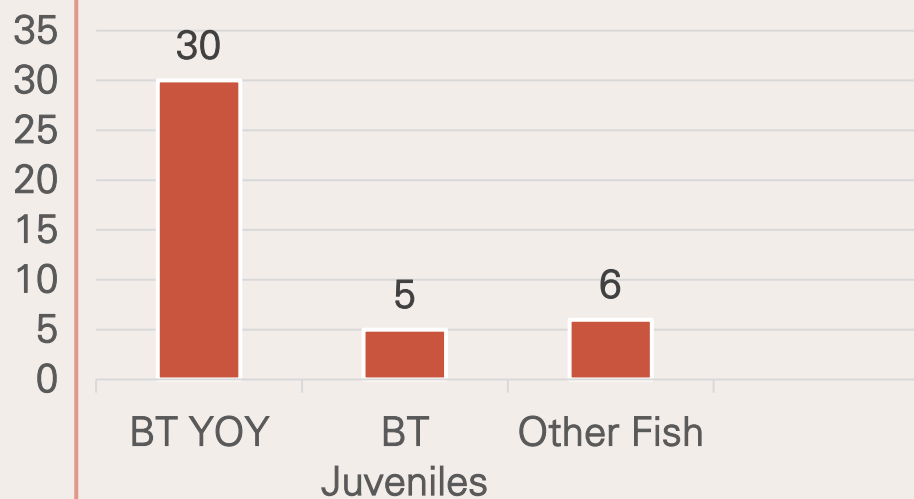




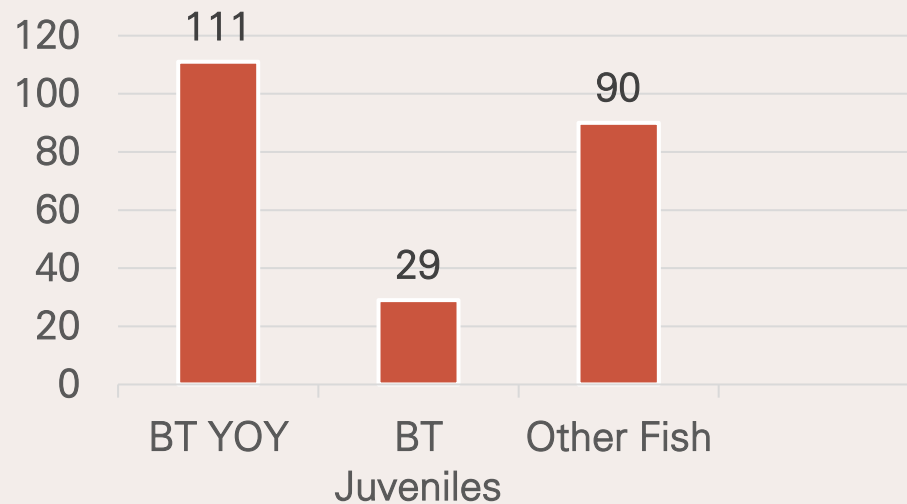
Fish Rescue



Indian Creek

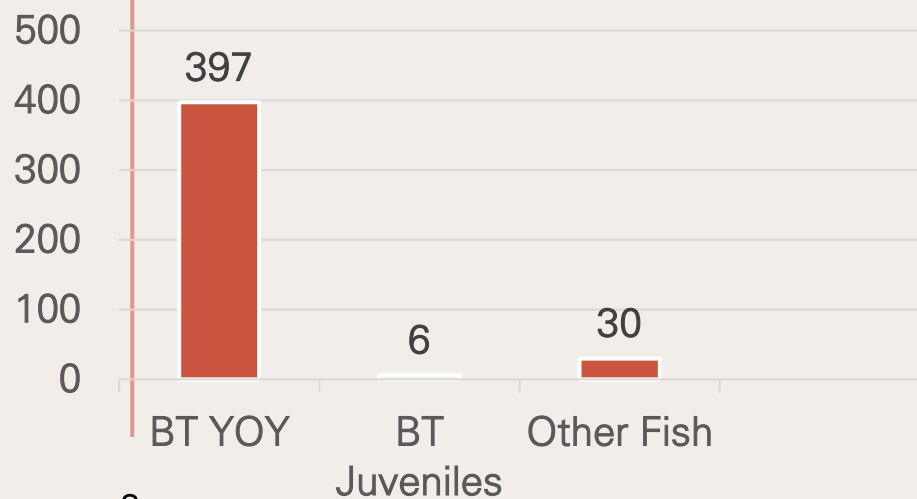


Deep Creek

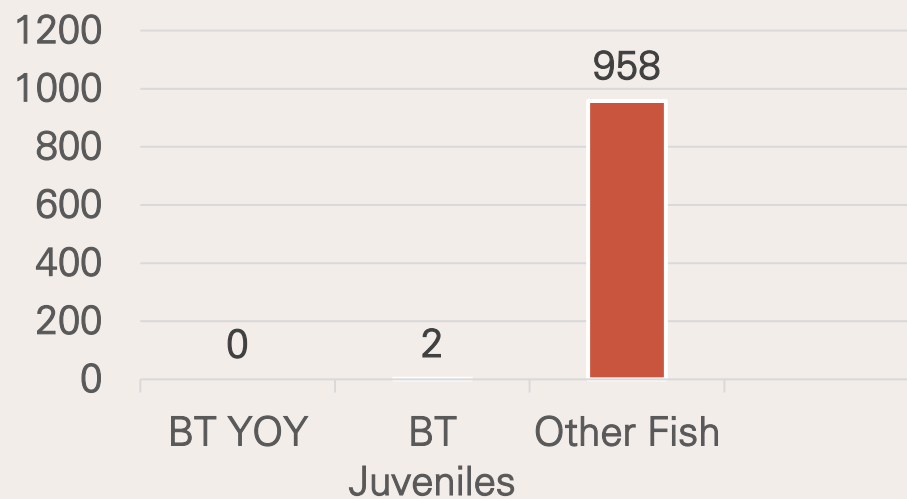


35 juvenile bull trout were PIT tagged and released between Indian, Deep, Kachess, and Gold Creek

Kachess River



Gold Creek



"other fish" consisted mostly of sculpin and cutthroat YOY



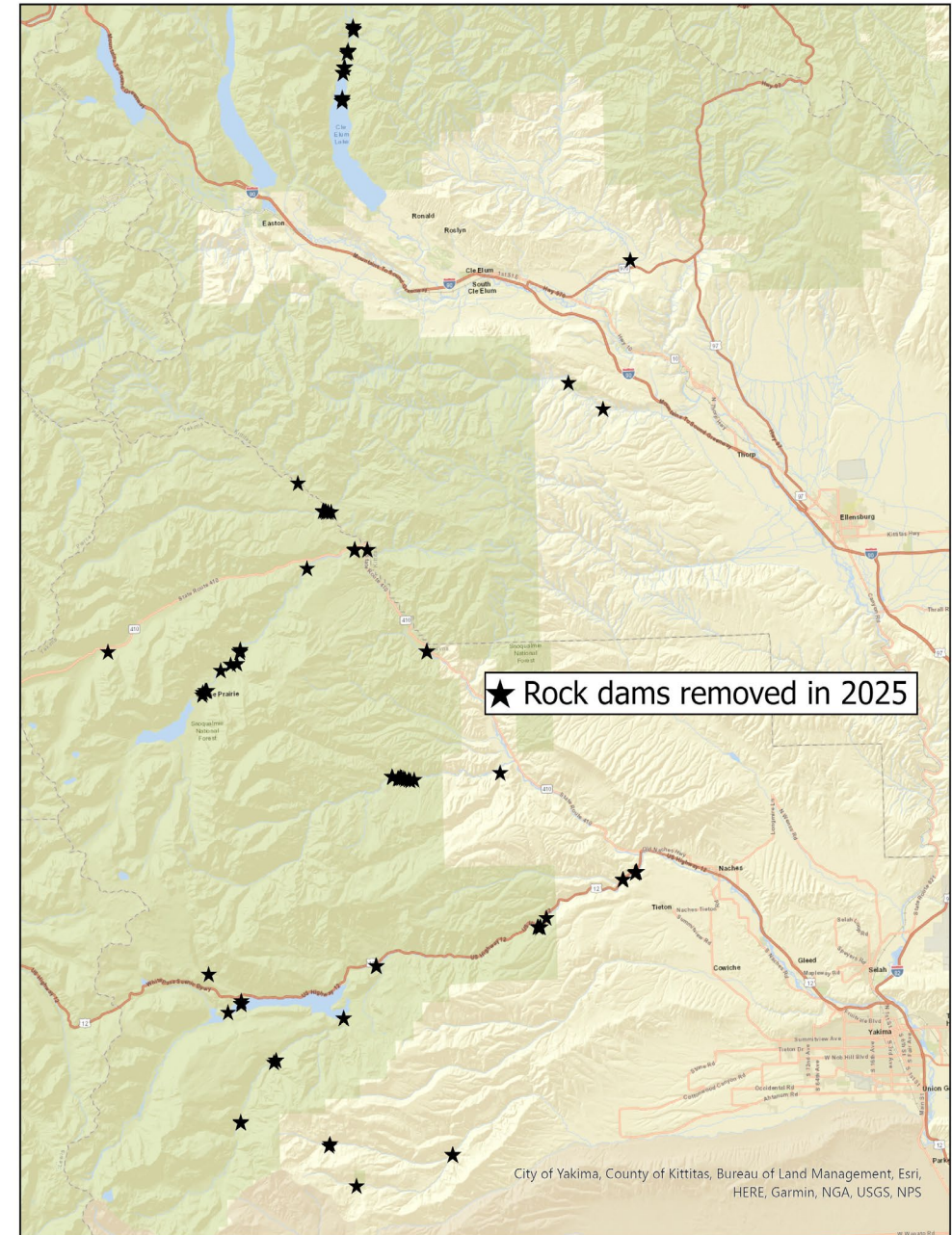
Rock Dams



Rock Dam Removal



- 144 Dams Removed
- 19 channel spanning
- Longest: 25m
- Average: 6m





Demographic Survey Upper Kachess River

6 nights

No pictures ☹️

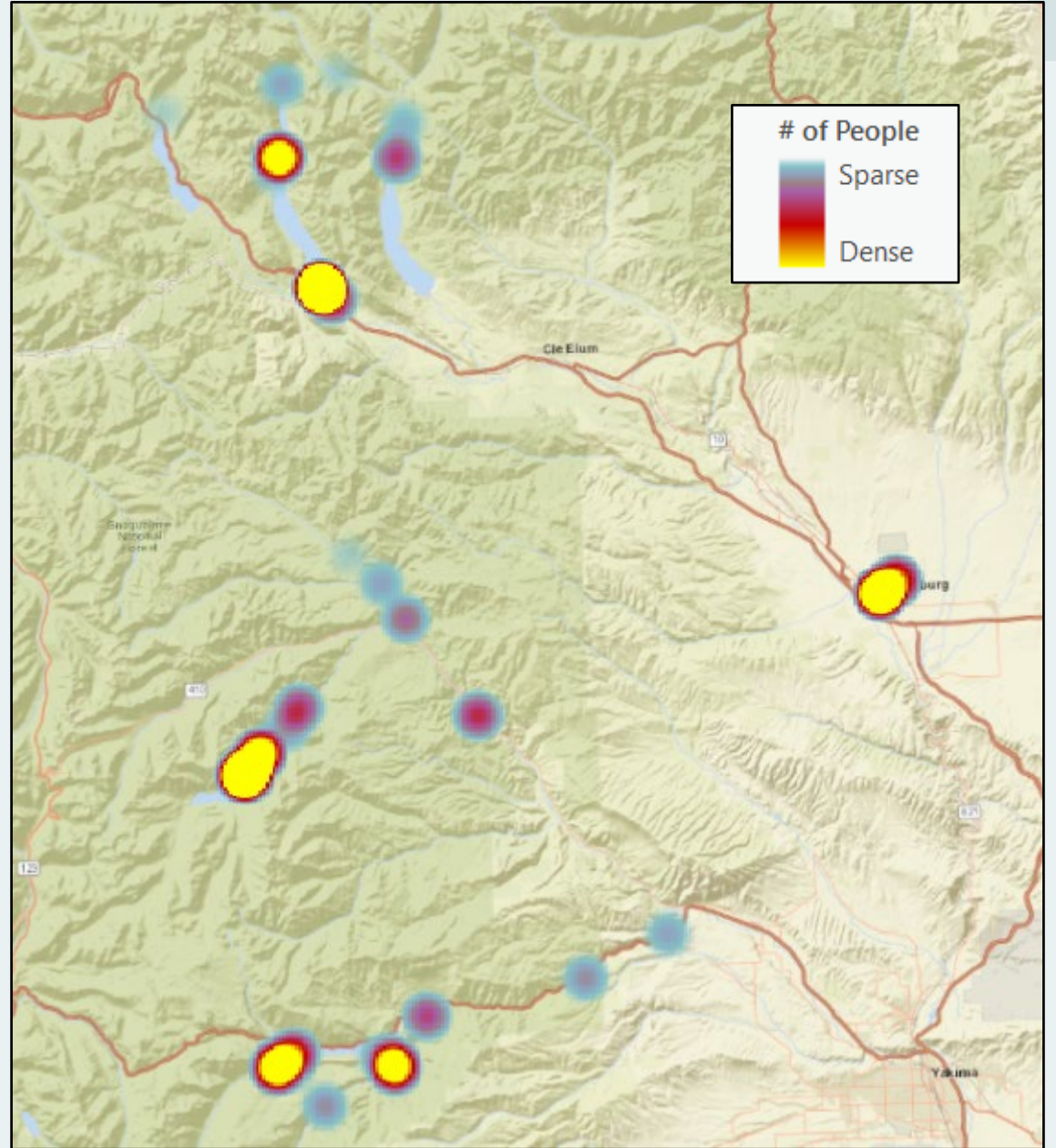
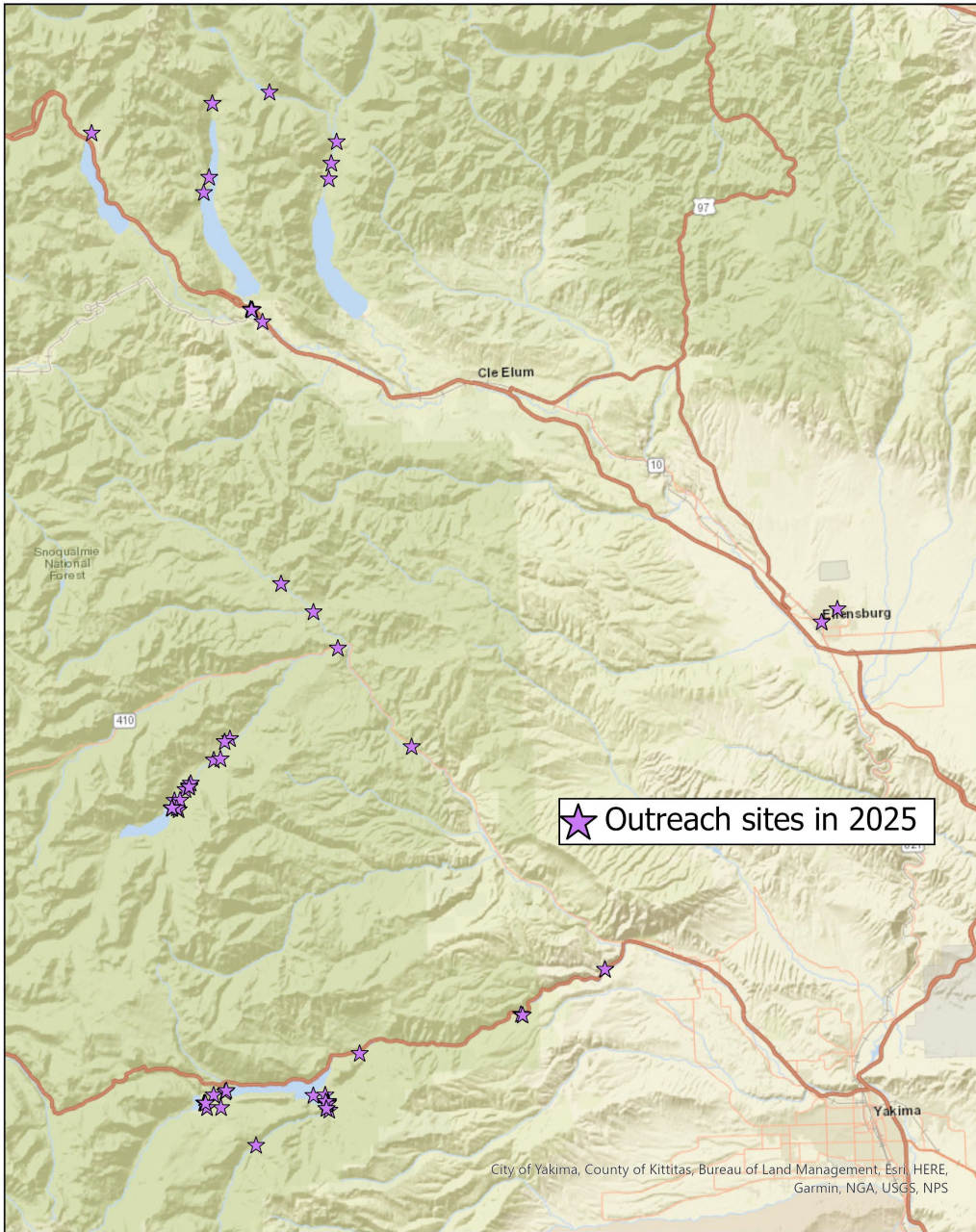
Scott to present the
findings





Outreach

- 524 people reached
- 16 angler interactions
- 188 informal river interactions
- 115 presentation attendees
- 205 table visitors





Drought Activities

- Flow measurements in Indian and Deep Creek
- Dewatering assessments in Deep, Indian and Gold Creek
- Fish rescue in Kachess, Gold, Deep, and Indian Creeks



Redd Surveys



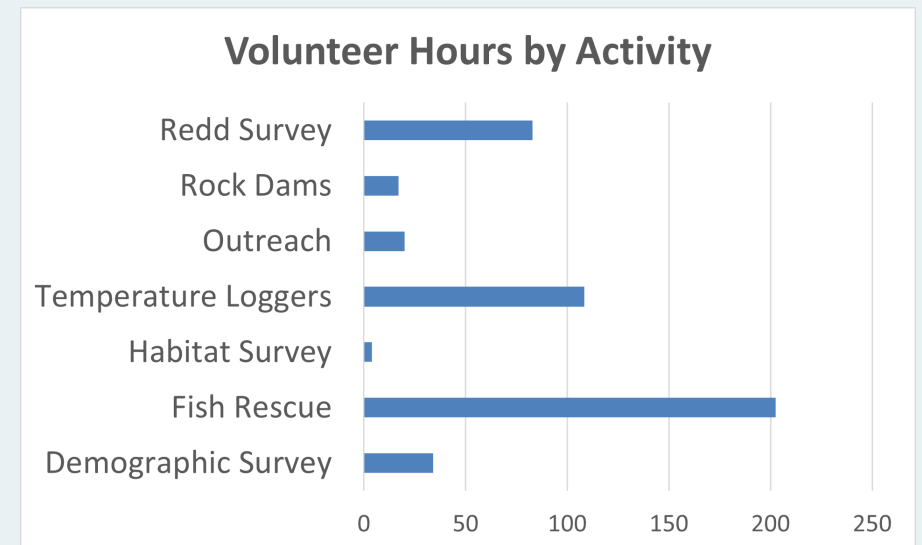
BTTF participated in 30 redd surveys in 2025





Volunteer Engagement

- 16 volunteers
- 479 hours on bull trout recovery





Thank
you BTTF Crew!!!

Aimee Taylor

bttf@midcolumbiafisheries.org