

An aerial photograph of a stream flowing through a forest. The stream is surrounded by dense vegetation, including tall grasses and various trees. A semi-transparent white rectangular box is overlaid on the center of the stream, containing the title and author information. The background shows a mix of evergreen and deciduous trees, with some bare branches visible, suggesting a late autumn or winter setting.

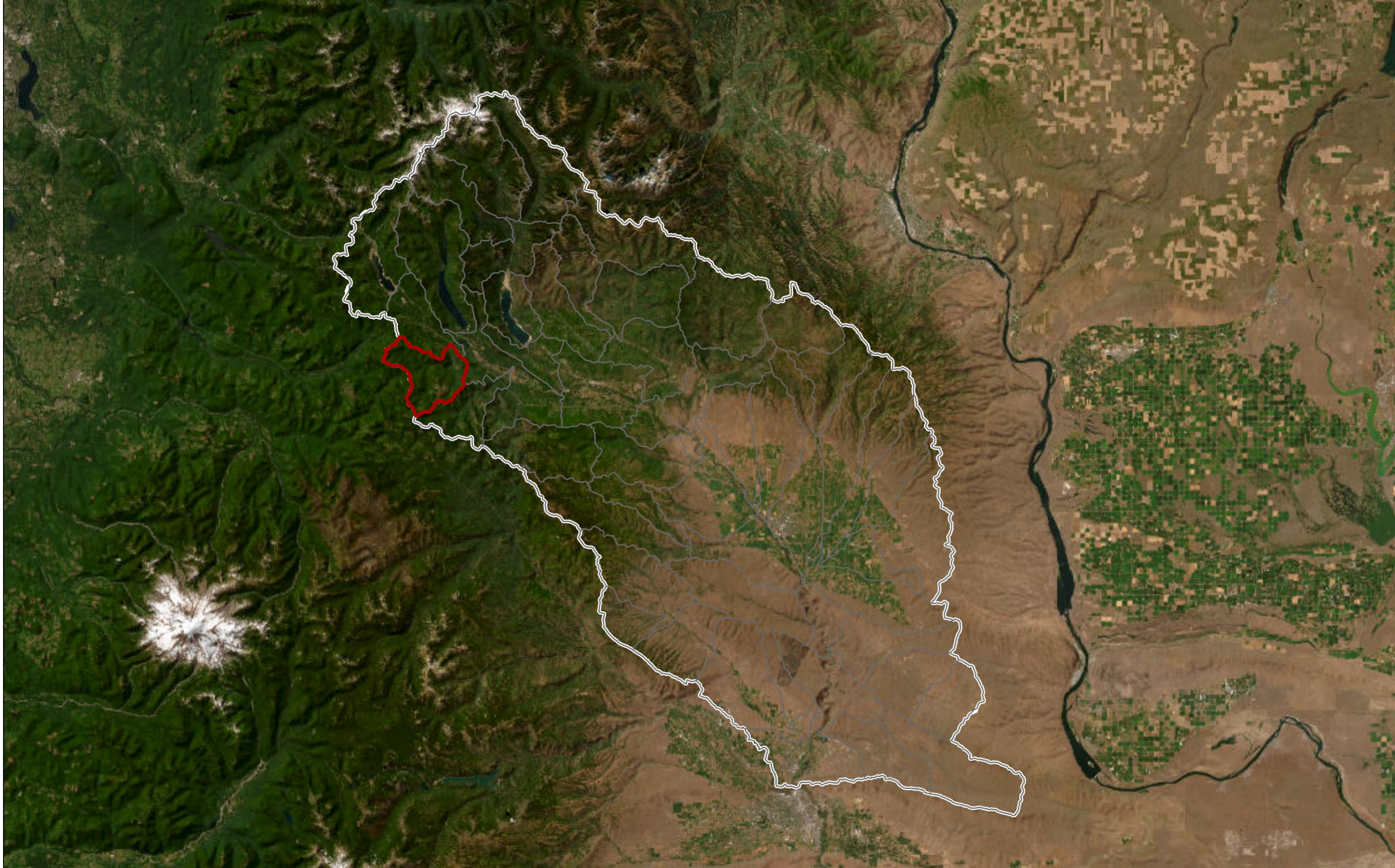
26-1469 Salmon Creek Fish Passage Preliminary Design

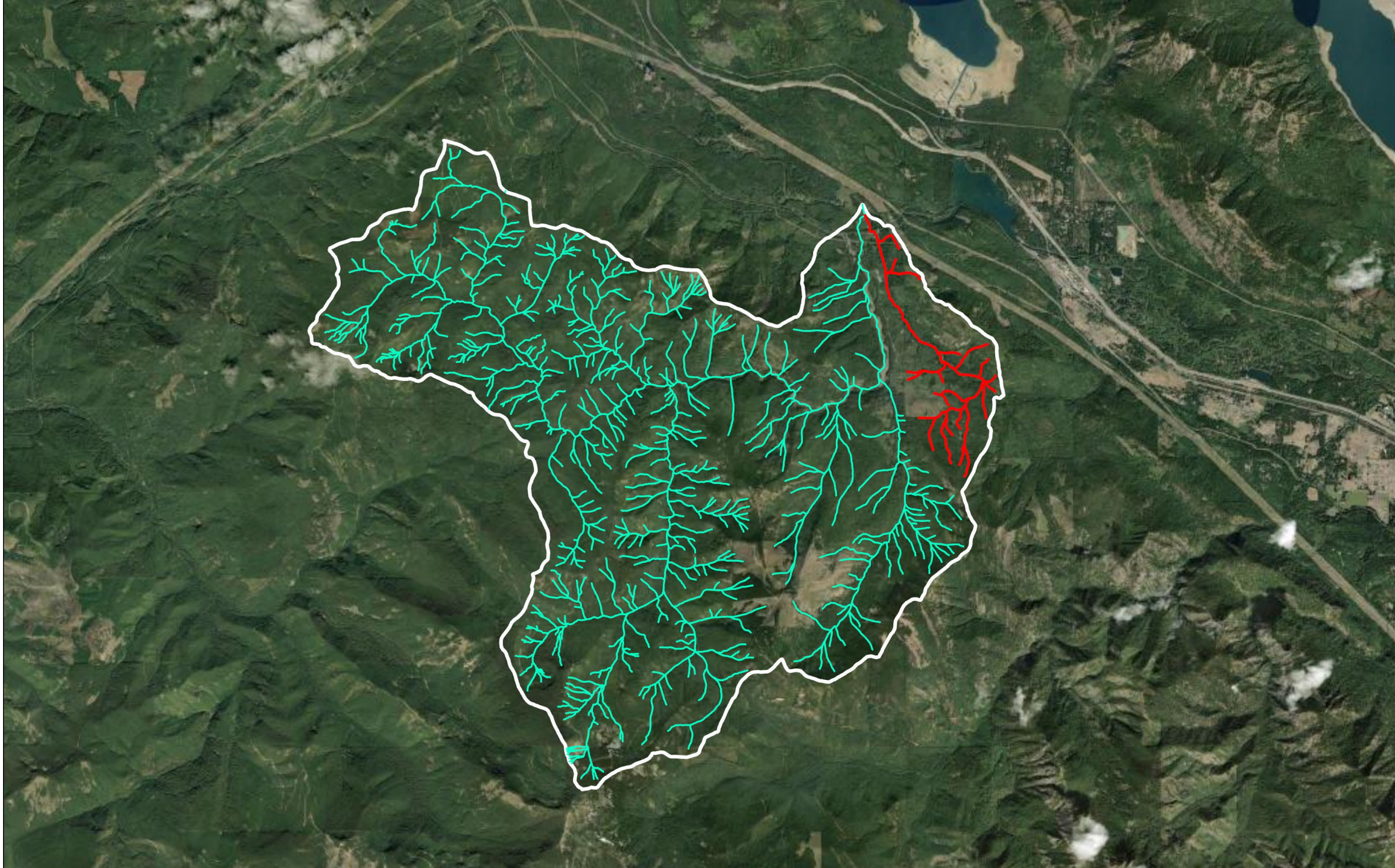
Steven Urakawa

Mid-Columbia Fisheries

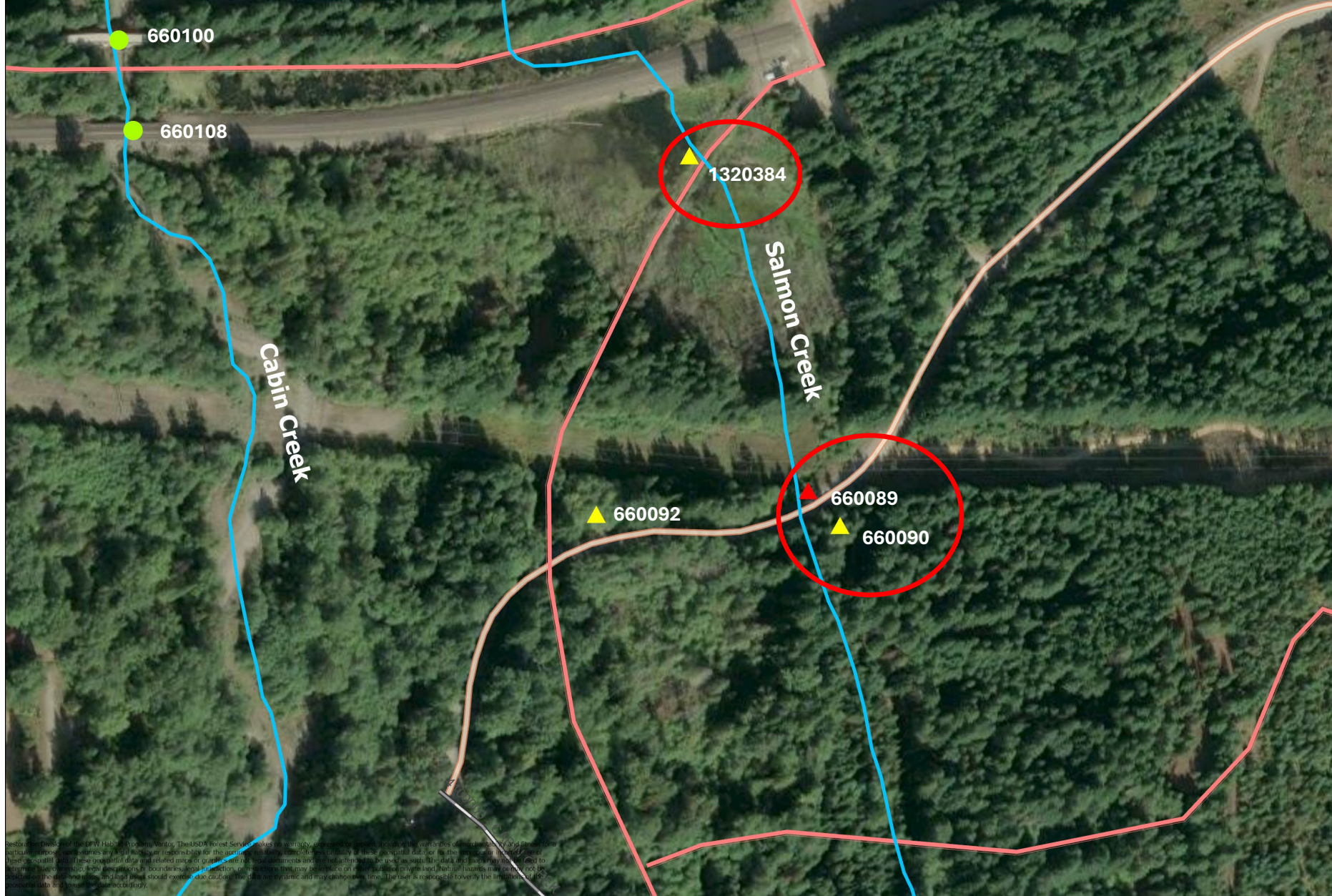
April 14th, 2026



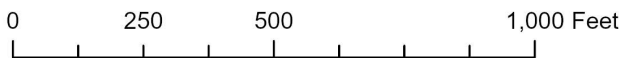




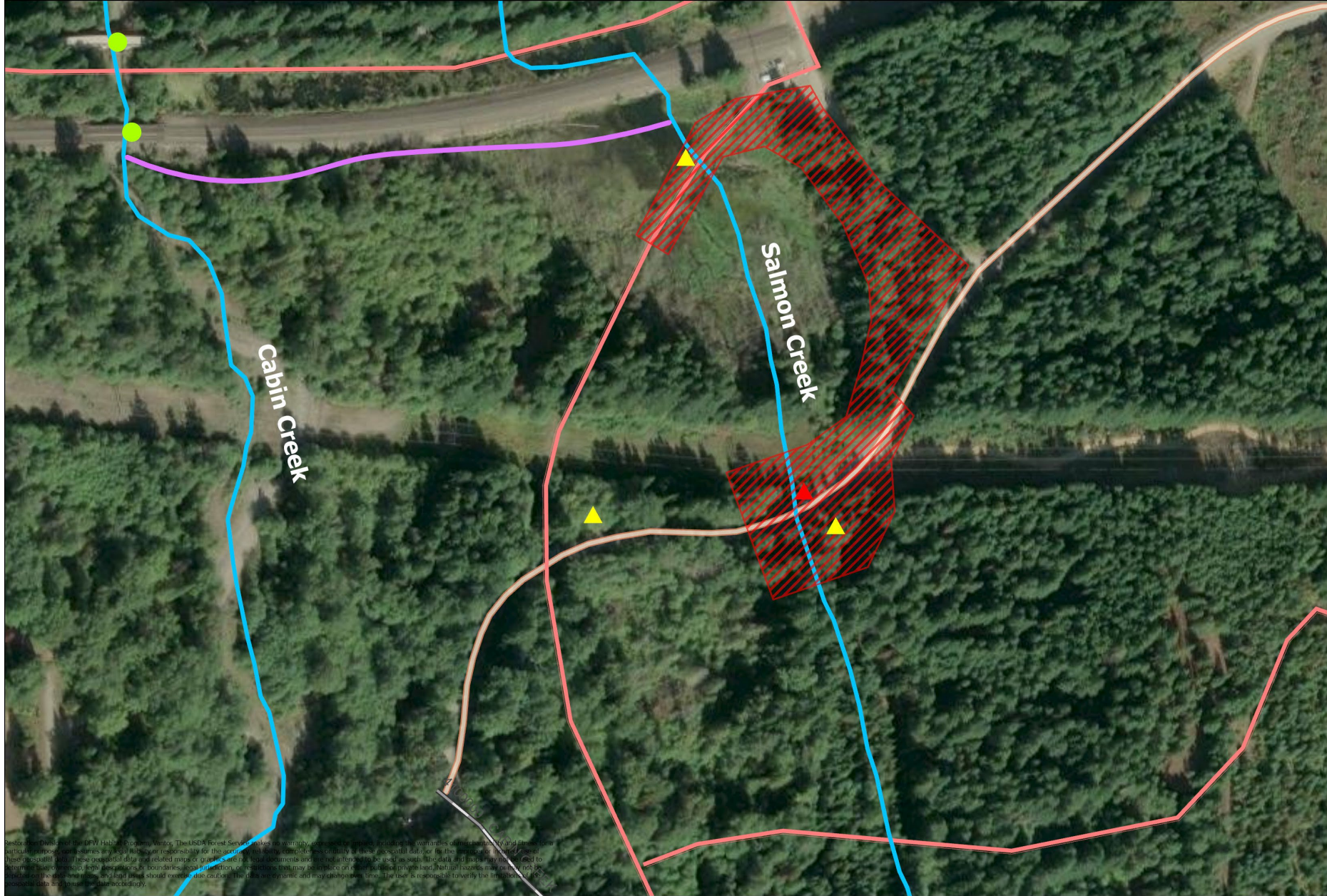




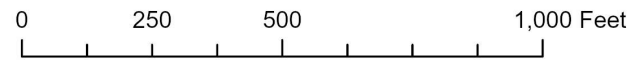
Restoration District on the DFW Habitat Inventory. The USDA Forest Service makes no warranty, expressed or implied, including the warranties of merchantability and fitness for a particular purpose, nor assumes any legal liability or responsibility for the accuracy, reliability, completeness or quality of these geospatial data or for the information included therein. These geospatial data and related maps or graphics are not legal documents and should not be used as such. The data and maps may not be used to determine legal interests, boundaries, legal jurisdiction, or requirements that may be enforceable on either public or private land. Natural resources may be affected by fire, wind, drought, and other factors, and land parcels should exercise extra caution. The data is dynamic and may change over time. The user is responsible to verify the timeliness of geospatial data and assess the data accuracy.



- Passable
- ▲ Partially passable
- ▲ Not passable
- SWIFD streamline
- Parks motorized trail
- County road
- USFS Gravel road, suitable for passenger car



Restoration funded by the DPW Habitat Program, Vinton. The USDA Forest Service makes no warranty, expressed or implied, including the warranties of merchantability and fitness for a particular purpose, and assumes no liability for the accuracy, reliability, completeness, or quality of these geospatial data, or for the use or misuse of the information contained in these geospatial data. These geospatial data and related maps or graphics are not to be used as a substitute for professional engineering or other services. The data and maps are provided to the user as a reference only. The user is responsible for verifying the accuracy of the data and for any use of the data. The user should exercise due caution in the use of the data and should not rely on the data for any critical or life-threatening decisions. The user is responsible for verifying the accuracy of the geospatial data and for any use of the data.



- Passable
- ▲ Partially passable
- ▲ Not passable
- Observed streamline
- Project planning area
- SWIFD streamline
- Parks motorized trail
- County road
- USFS Gravel road, suitable for passenger car



1320384



660089



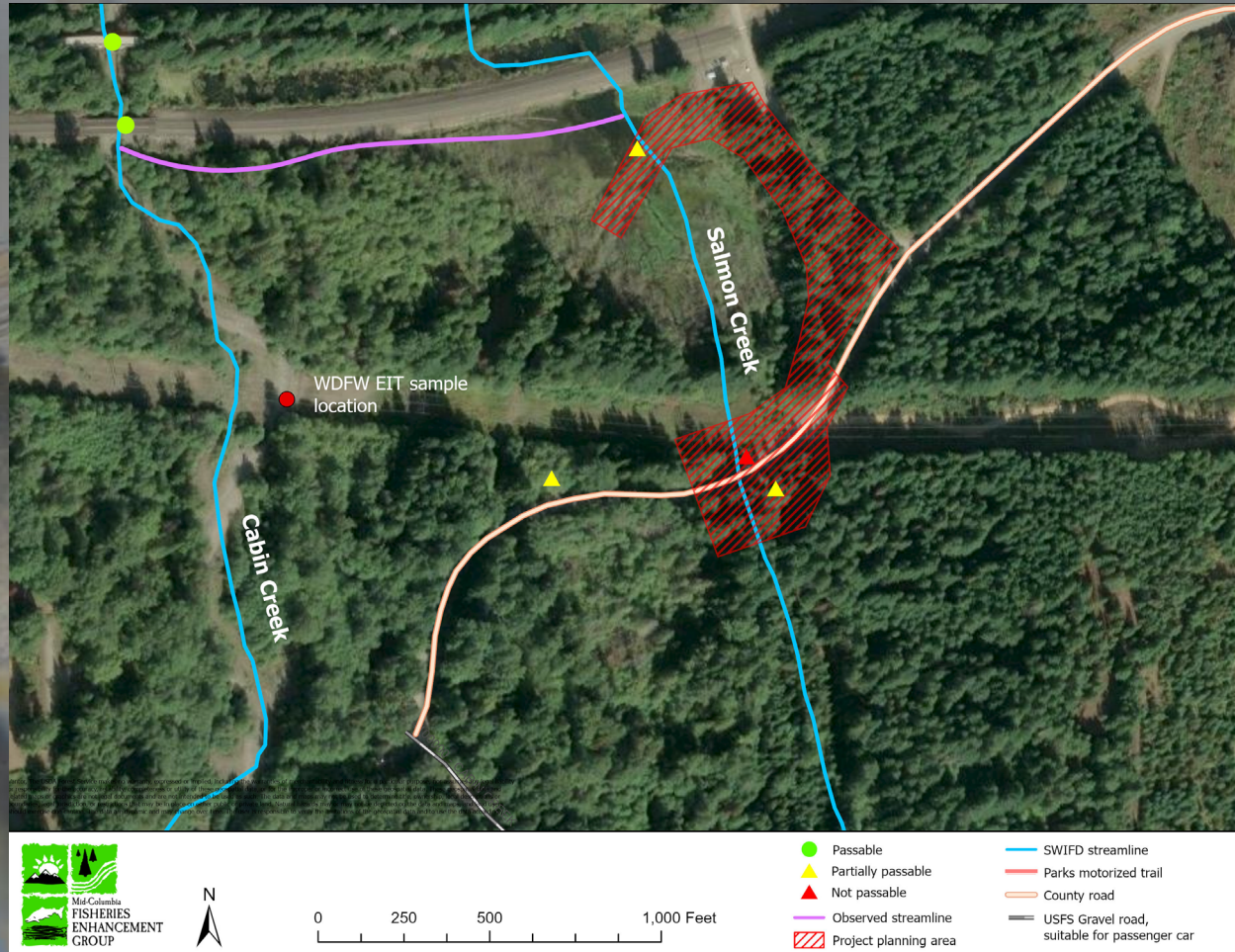
660090

The Culverts

- 1320384 – State Parks, 33% passable
- 660089 – Kittitas County, 0% passable
- 660090 – State Parks, 67% passable

Fish

- Chinook salmon
 - Juveniles documented in Cabin Creek (WDFW EIT, 2023) and Salmon Creek (MCF 2024)
- Steelhead/Rainbow trout (WDFW EIT, 2023)
 - All life stages
- Cutthroat trout
 - All life stages
- Bull trout?





Cabin Creek Restoration Assessment (MCF, 2024)

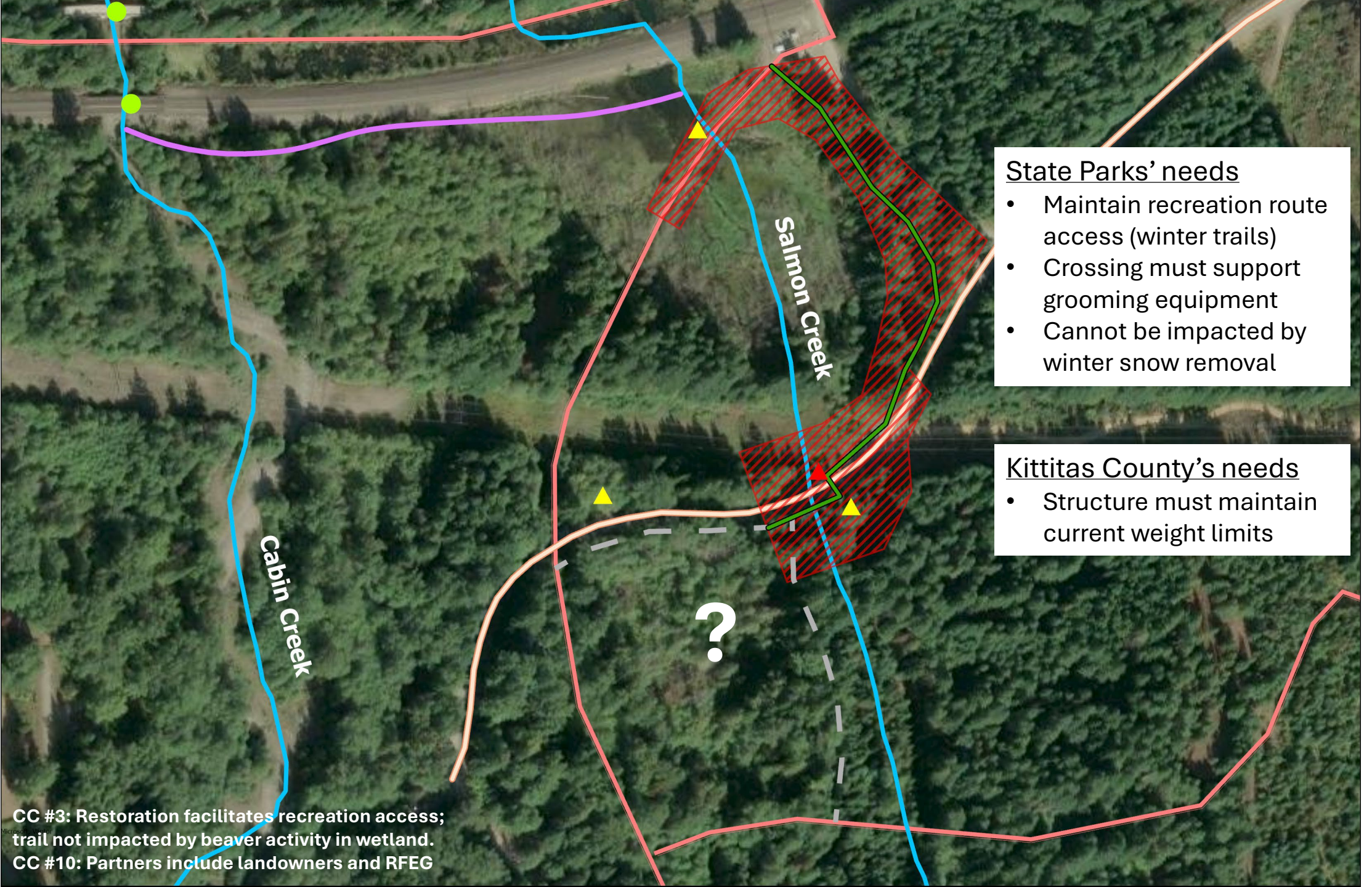
- 1) Restore hydrology to hold water on the landscape longer;
- 2) Restore passage and habitat to enhance resident and anadromous fish populations; and,
- 3) Implement a forest stand prescription that will benefit ecosystem processes

CC #9: Project furthers prior work in the watershed, builds on Easton fish passage

An aerial photograph of a stream flowing through a forested area. The stream is surrounded by a mix of evergreen and deciduous trees. The water in the stream is a dark, greenish-brown color. The surrounding land is covered in dry, yellowish-brown grass and some bare trees. The text 'Other Assessments' is overlaid on the right side of the image in a large, black, sans-serif font.

Other Assessments

- Yakima Steelhead Recovery Plan
 - Impaired fish passage
 - Floodplain alteration
- Bull Trout Action Plan
 - Impaired fish passage



State Parks' needs

- Maintain recreation route access (winter trails)
- Crossing must support grooming equipment
- Cannot be impacted by winter snow removal

Kittitas County's needs

- Structure must maintain current weight limits

CC #3: Restoration facilitates recreation access; trail not impacted by beaver activity in wetland.
CC #10: Partners include landowners and RFEG

Fish Benefits

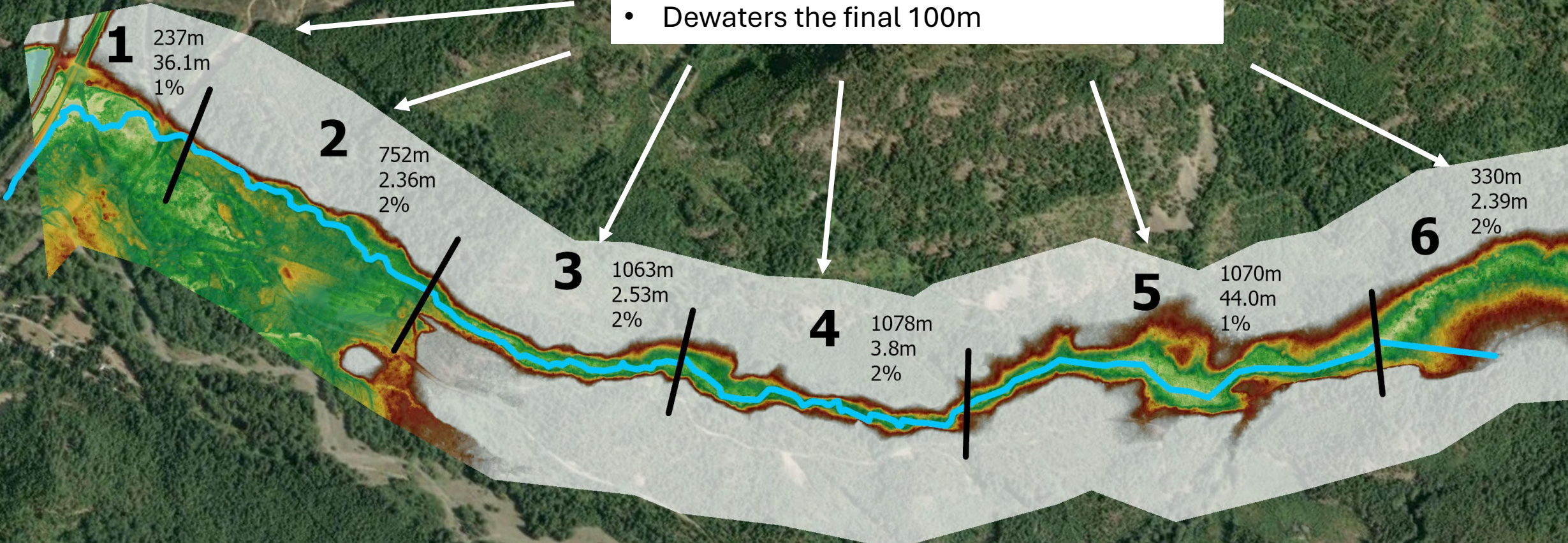
- 1.9 miles, assessed by WDFW in October 2025
- ~ 2 °C cooler than Cabin Creek (MCF, 2024)
 - Projected to be ~ 4 °C cooler than Yakima River in modeled 2080 conditions (Isaak et. al, 2017)
- Natural sediment transport

Riparian Composition	Habitat Complexity	Canopy Cover	Spawning Gravel Fines	Hydraulic Alteration
7.83	7.50	6.17	4.83	7.50

* Mean qualitative scores out of a maximum of 10 (Costello DRAFT, 2026).



- Channelized, significant alteration
- Road cut through riparian area
- Dewateres the final 100m



Timeline & Budget

Task	Estimate 1	Estimate 2	SRFB Proposal
Site assessment - Topo/Bathy survey - Stream survey - Geotech investigation - September 2027	\$ 95,100.00	\$ 46,296.00	\$ 50,000.00
Hydrologic/hydraulic analysis - Hydraulic modeling - Data analyses - December 2027	\$ 154,203.00	\$ 19,292.00	\$ 23,500.00
Preliminary and final designs - Conceptual designs - Basis of design report - QA/QC - Preliminary (permit ready) designs - Final design - December 2027 - December 2027 - September 2028	\$ 212,588.00	\$ 133,403.00	\$ 151,500.00
Right-of-way and utility coordination	\$ 21,773.00	\$ -	\$ -
Environmental compliance - Critical areas review - Cultural resources - Wetland delineation - December 2027 - March 2028 - March 2028	\$ 107,411.00	\$ 45,000.00	\$ 68,000.00
Project management - Coordination - Bookkeeping - Admin	NA	NA	\$ 41,845.00
Indirect	NA	NA	\$ 50,227.00
	\$ 591,075.00	\$ 243,991.00	\$ 385,072.00

CC #8: Design costs are based on real estimates, not past projects; replacement of 660089 prevents infrastructure failure.

CC #13: In-kind match from partners (Parks & KCPW)



Questions?

