

Field Trip Friday

Aaron Rosenblum, Senior Habitat Project Manager



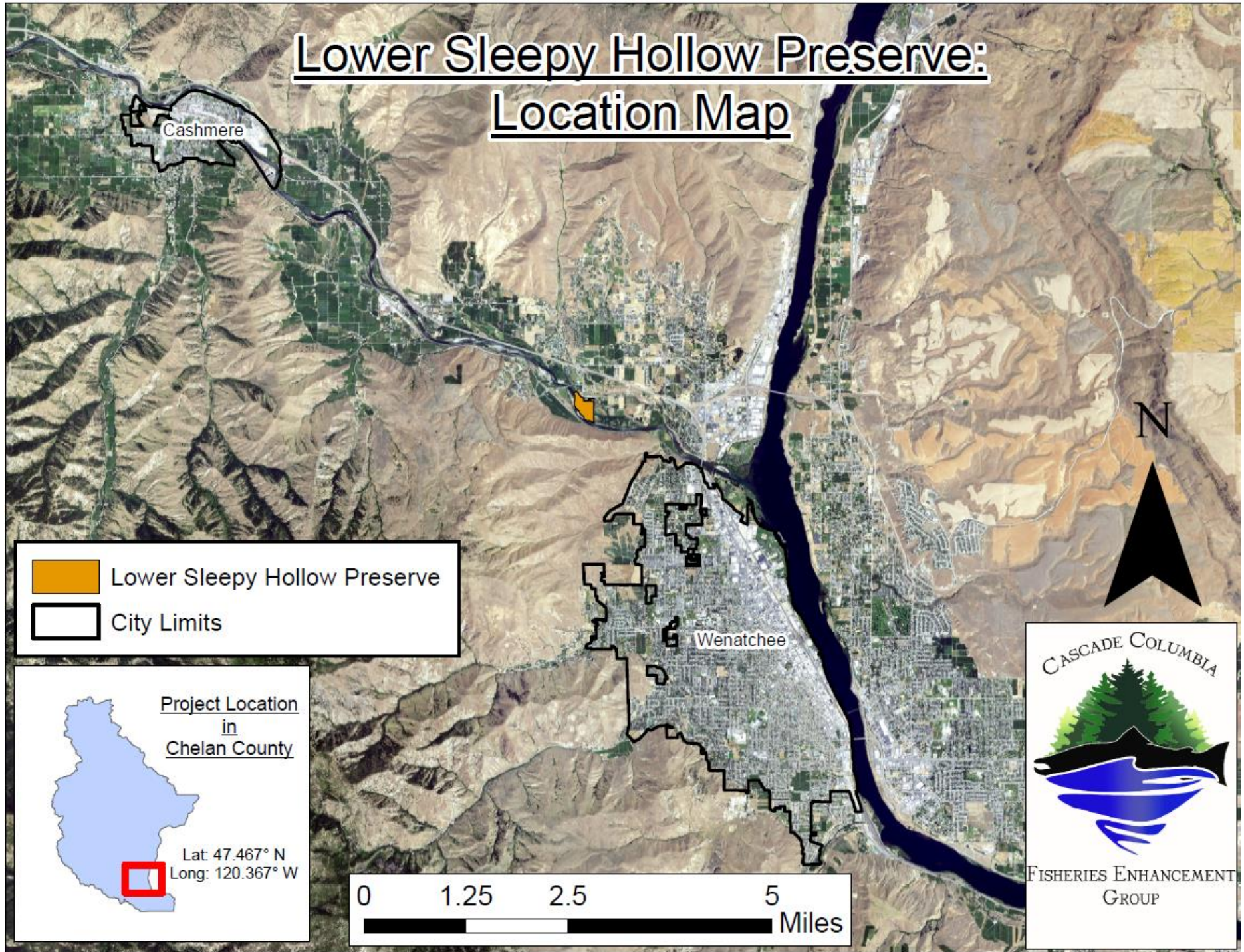
Lower Sleepy Hollow



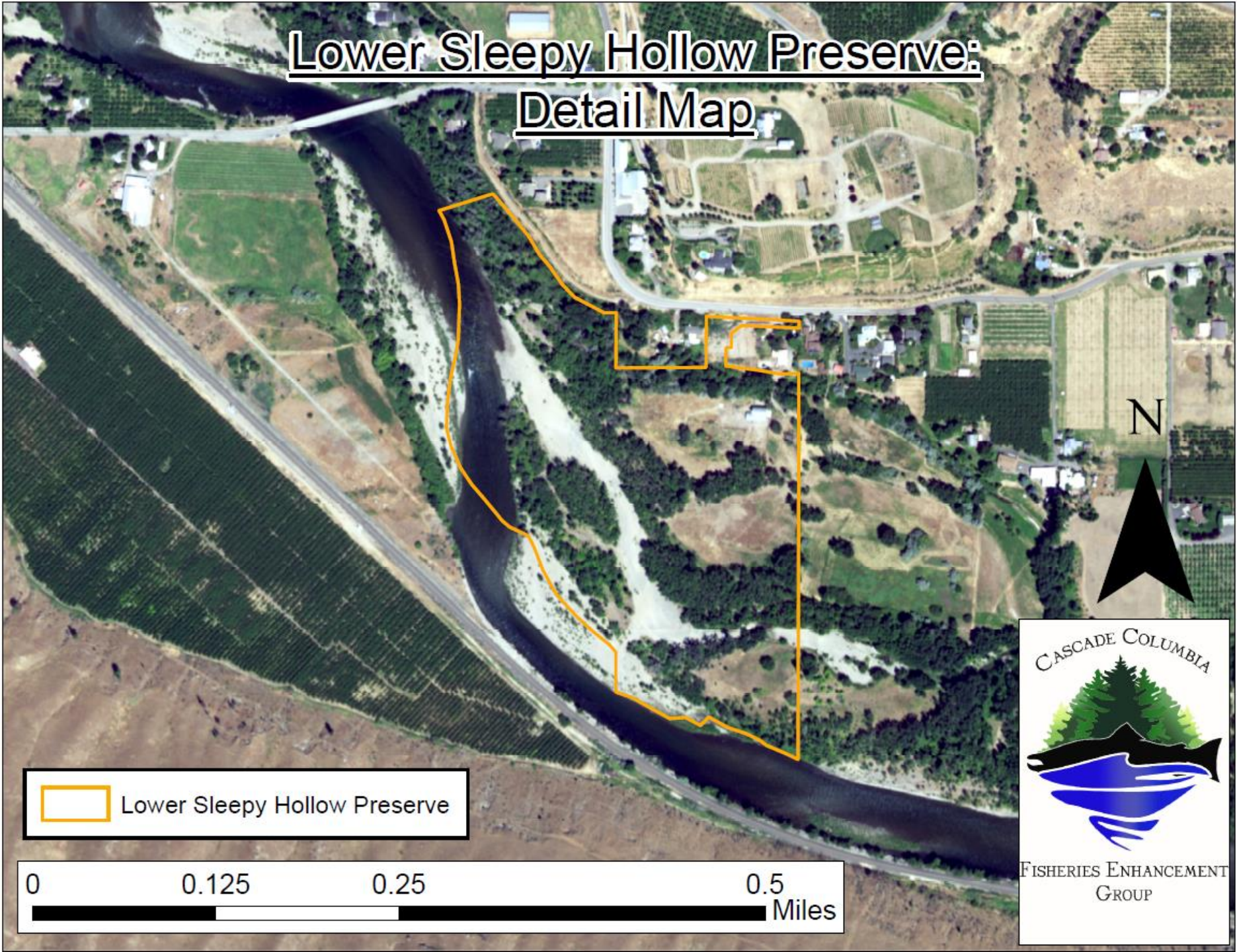
Peshastin Creek RM 0 – 0.3



Lower Sleepy Hollow Preserve: Location Map



Lower Sleepy Hollow Preserve: Detail Map



 Lower Sleepy Hollow Preserve

0 0.125 0.25 0.5
Miles





Lower Sleepy Hollow Restoration

- 2023 Plantings
- 2022 Plantings
- 2021 Plantings
- 2020 Plantings
- 2019 Plantings
- Cable Removal
- Willow Staking



By Molly Jennings, CDLT 2023. Data: Chelan County. NAD 1983 HARN State Plane Washington South FIPS 4602











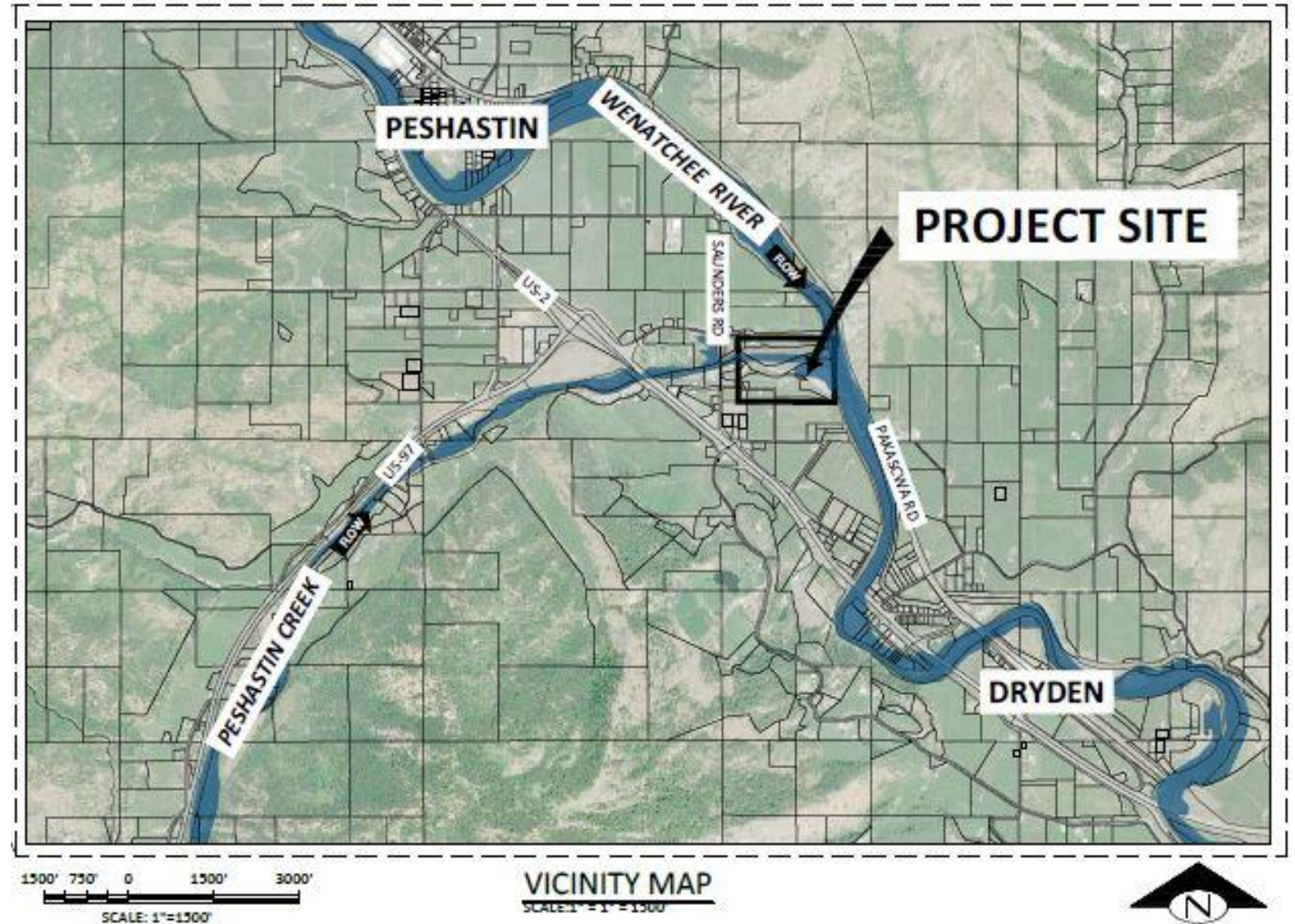
Photo Credit: Kirk Beckendorf, Cascadia CD

45 51F 29.39 inHg TRAILCAM01 12/11/2025 02:58PM

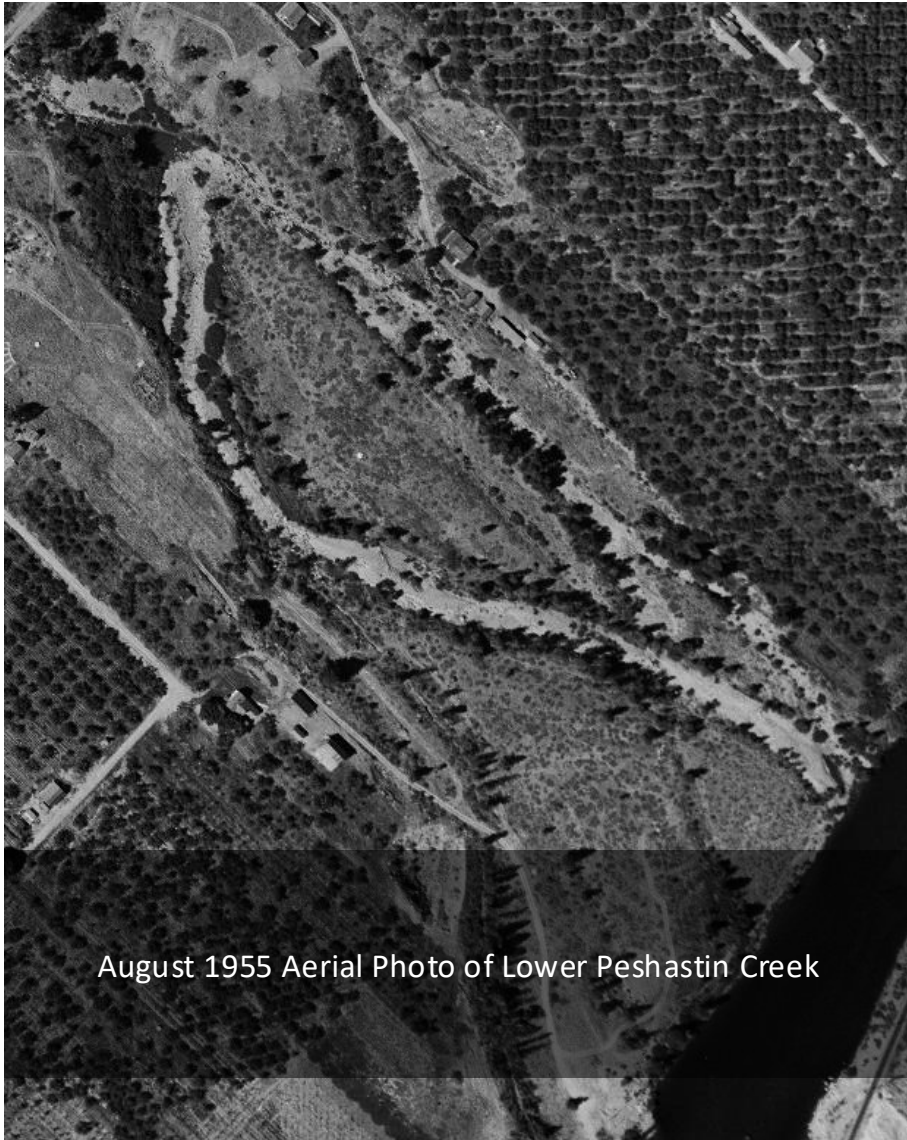
© MW One Planet Club

Peshastin Creek RM 0 – 0.3

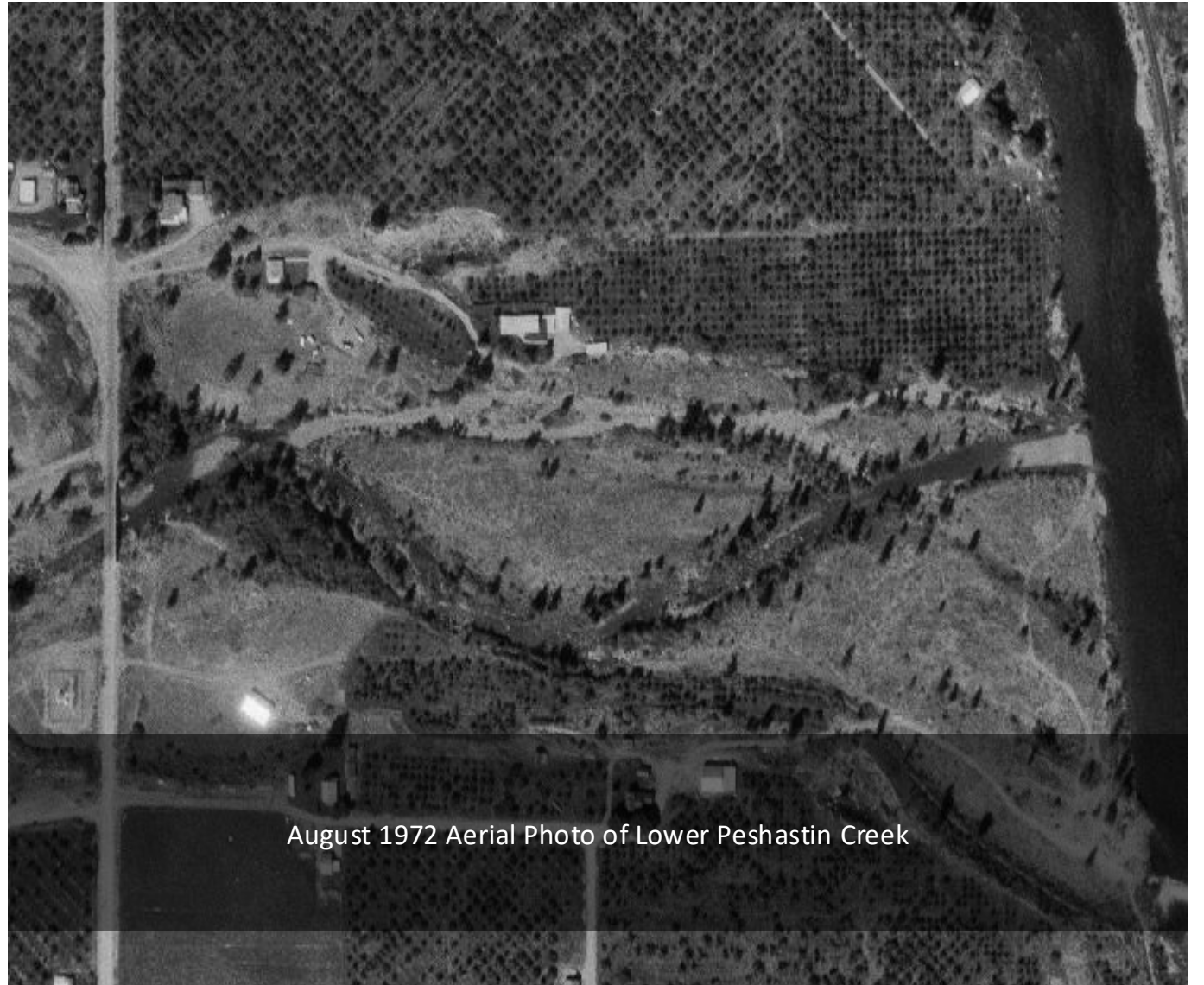
- Lower 0.3 river mile of Peshastin Creek
- Upstream of confluence with Wenatchee River
- Property Owner: WDFW



Historic alignment



August 1955 Aerial Photo of Lower Peshastin Creek

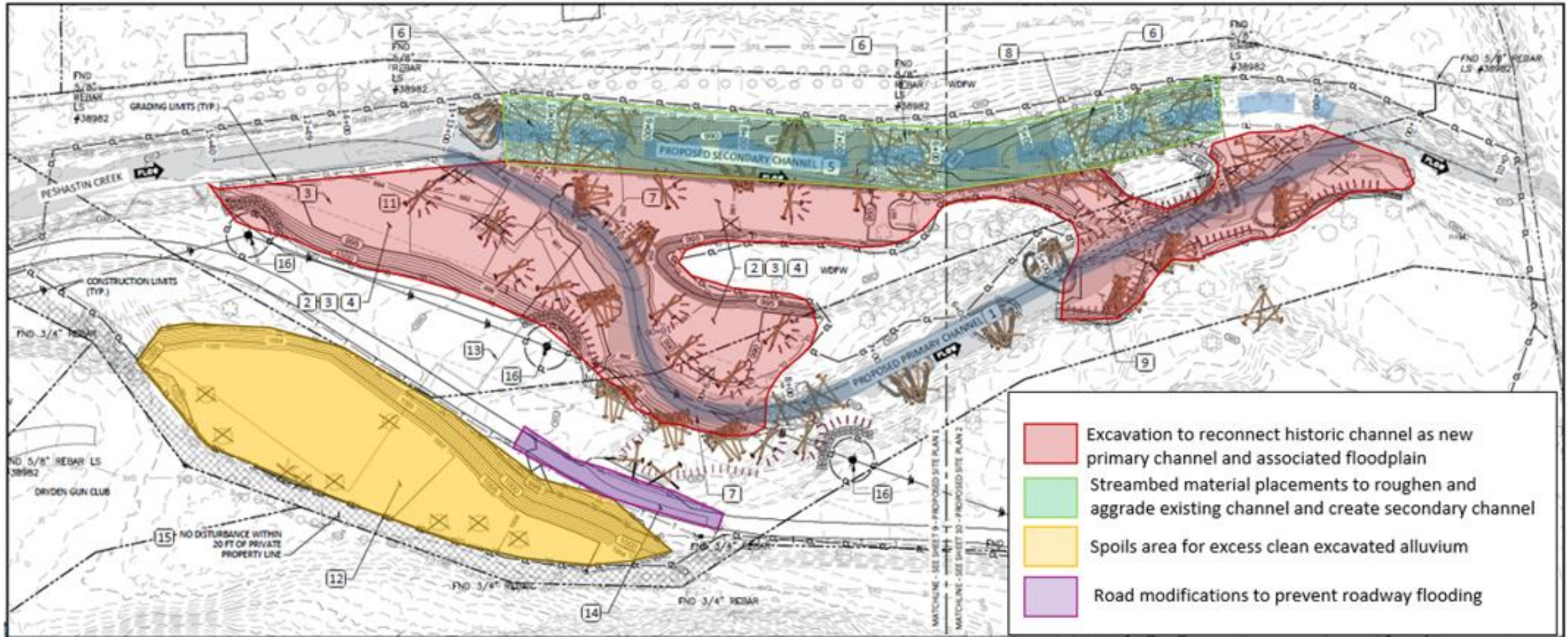


August 1972 Aerial Photo of Lower Peshastin Creek

Pre-Project Conditions



Proposed Project







Lower Peshastin Creek Restoration

RM 0.0 – 0.3

Project Highlights

- Over 2,000 lbs. of lead shot removed and recycled
- 1100' of new primary channel created and 800' of existing channel restored into secondary channel
- Increase of 3.7 acres of aquatic habitat at spring high flow
- 34 Engineered Log Jamss and 16 floodplain roughness features totaling ~1,000 pieces of wood added to the creek
- About 21,000 cubic yards of excavation



Pre-Project Conditions



Imagery Credit: Ken Muir, WDFW

20 m
100 ft



Imagery Credit: Ken Muir, WDFW

Logistics and Schedule

- 8:45am - Meet at Olds Station Park & Ride for Carpooling
- 9:00am – Lower Sleepy Hollow
- 10:15am – Depart Lower Sleepy Hollow
- 10:30am - Peshastin Creek RM 0 – 0.3
- 11:40am – Depart Peshastin Creek
- Noon – Return to Olds Station

Directions:



Aaron Rosenblum
509-630-4160
aaron@ccfeg.org