



Riparian Funding & Resource Landscape

Elizabeth Spaulding
Governor's Salmon Recovery Office



Our Role

The Governor's Salmon Recovery Office coordinates salmon and orca recovery for the state to ensure a future with abundant salmon, healthy orcas, and restored lands and waterways that can adjust to a changing climate.

What We Do

- Federal and Legislative Affairs
- **Governor's Salmon Strategy**
- Southern Resident Orca Recovery
- Regional Federal Recovery Plans
- Biennial State of Salmon Report
- **Agency Riparian Coordination**
- Science and Monitoring
- Coordination with Tribes

Strategy Purpose

A future with healthy and resilient salmon, steelhead and trout runs that are restored to harvestable levels across the state

Statewide Priorities

State Agency Coordination

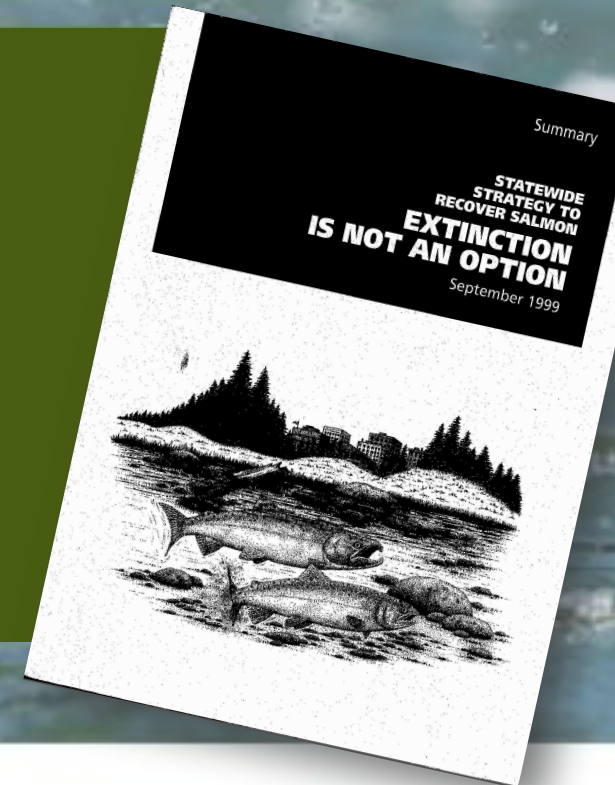
Regional ESA Recovery Plans

Tribal Priorities

2021

Governor's salmon strategy update

Securing a future for people and salmon in Washington



State Salmon Strategy

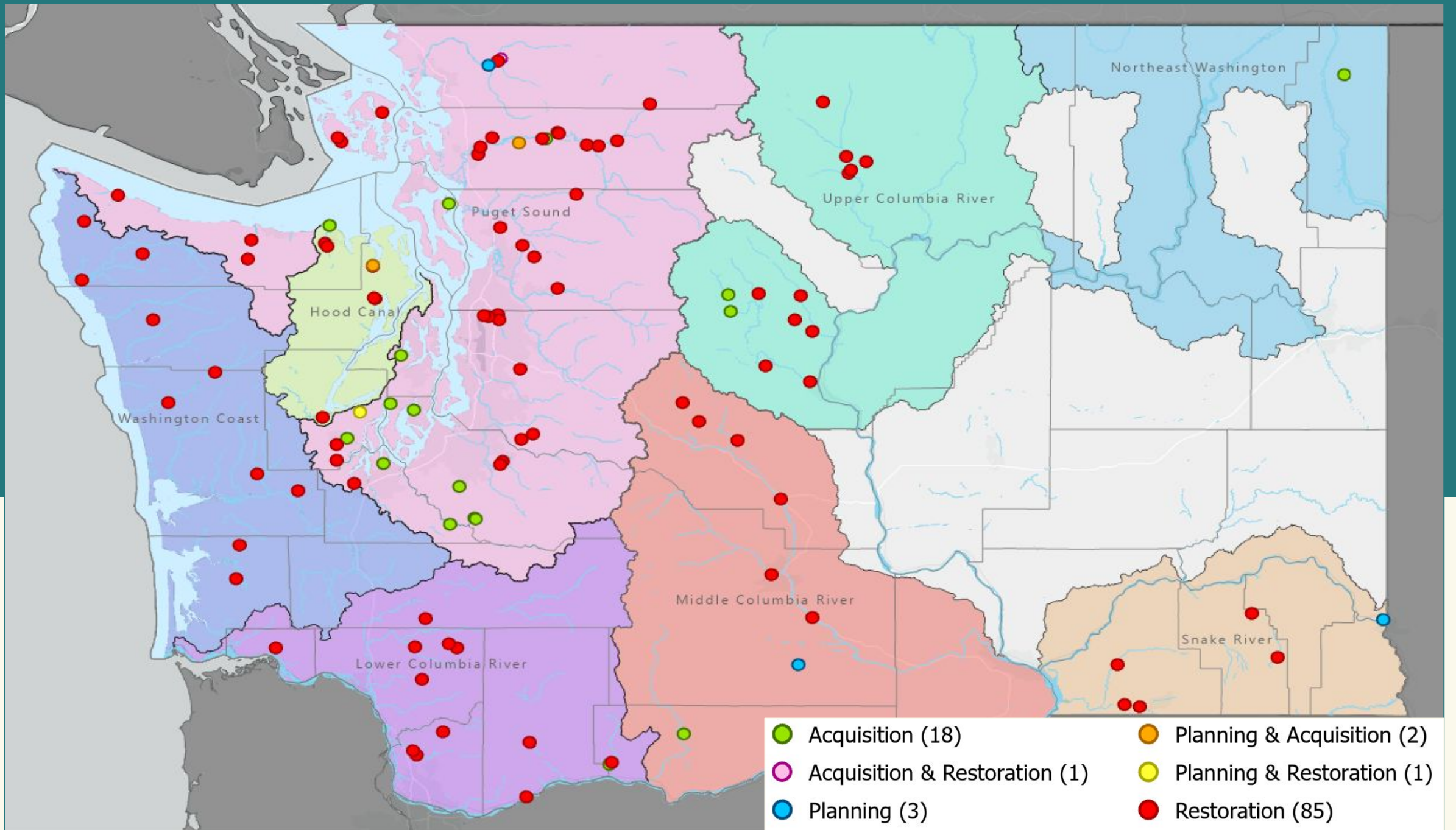
How we will establish a statewide approach for fully functioning riparian habitat:

- Establish a statewide standard for fully functioning riparian habitat, which requires actions through growth management, agriculture, forest lands, water quality and quantity and riparian strategies. This will help us better protect existing habitat and increase riparian habitat in watersheds where riparian areas are critical to maintaining cool water temperatures
- Leverage the Growth Management Act and Shoreline Master program to implement a statewide riparian standard through local land use planning and regulation.
- Establish a riparian reserve program that provides financial incentives for all landowners to set aside and restore riparian areas important for salmon recovery

Salmon Recovery Funding Board – Riparian Grant Program



YEAR	AVAILABLE PROJECT FUNDING	FUNDING OBLIGATED	NUMBER OF FUNDED PROJECTS
2024	\$23,870,000	\$23,870,000	65
2025	\$19,076,000	\$13,785,351	45
2026	\$5,290,649	N/A	N/A
TOTAL	\$42,946,000	\$37,655,351	110





Project Sponsors



Tribes



Nonprofits



Regional Fish Enhancement Groups



Conservation Districts



Other government



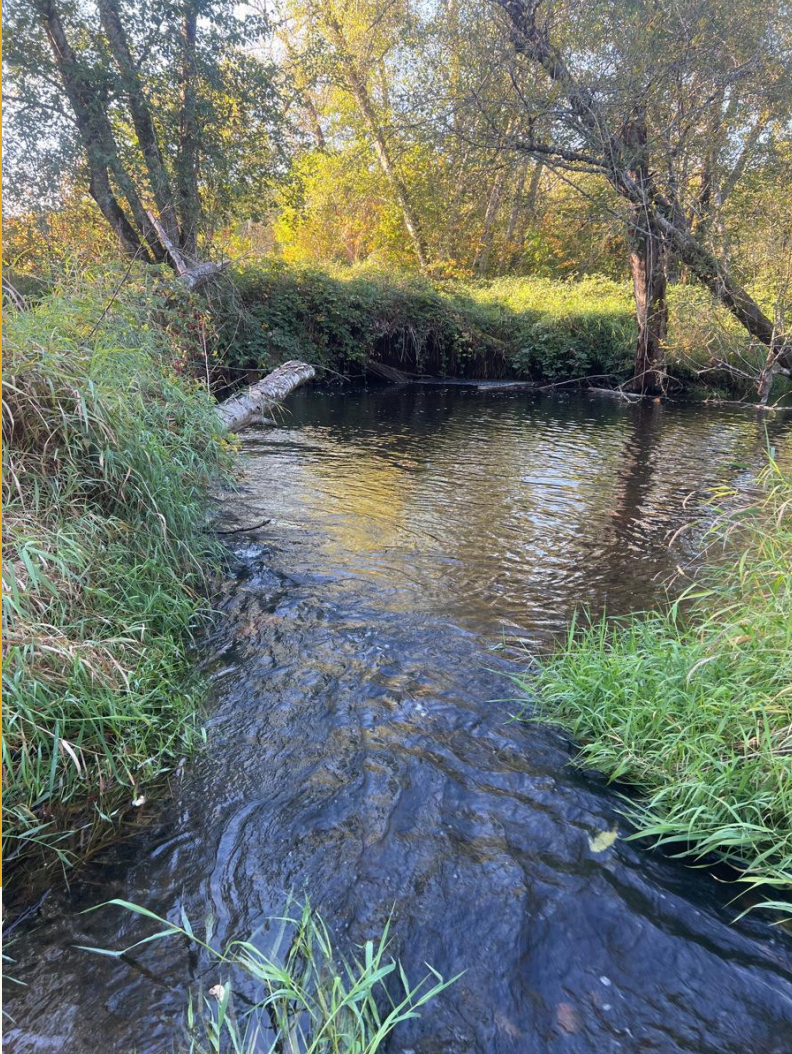
WASHINGTON STATE
RECREATION AND CONSERVATION OFFICE

Governor's Salmon
Recovery Office

Example Project Types

- **Riparian planting and instream work:** Walla Walla Conservation District
 - Planting 1.63 acres and placing beaver dam analogue structures to increase shade and improve overall riparian function.
- **Acquisition:** Seattle City Light and Skagit Land Trust
 - Protecting 40 acres of Chinook habitat through fee simple and conservation easement.
- **Riparian planting and ongoing stewardship:** Mason Conservation District
 - Restoring 45 acres of degraded riparian habitat and providing 400 acres of stewardship within the Skokomish River floodplain.





Current Approach

- Provided through regional allocation
- Confined to specific project types (planting, stewardship, invasives, acquisitions, some planning & in-stream)
- Embedded in annual SRFB grant round
- Largely follows existing policies

Program Evolution



Now is the time

Let's think differently

Riparian is unique

Board Direction

Desired Outcomes

12



Near Term Options



Riparian Panel



Auto Funding Renewal



Multi-year commitments

Long Term Options



Funding Riparian Strategies



Programmatic Contracts



Block Grants



Riparian Grant Program



Amy Martin

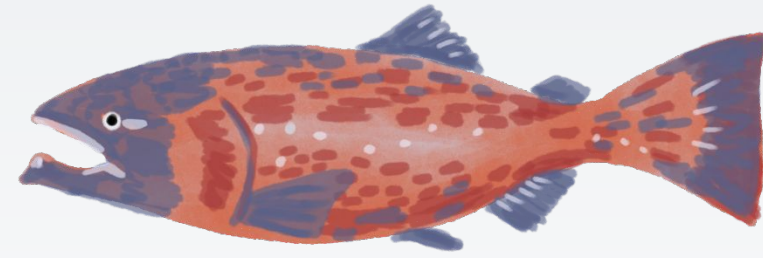
Riparian Grant Program Manager

Eastern Washington Riparian Planting
Symposium

February 26, 2026

Background

Riparian Grant Program launched in 2024



Significant investment in riparian management zone restoration projects across the state

Riparian planting in Stevens County



RGP Funding

Biennium grant cycle

Biennium	RGP Grant Awards
23-25	\$10,600,000
25-27	\$30,184,000

*Steptoe Butte by
Garrett LaCivita, Palouse CD*



Achievements in '23-'25

Successes from '23-'25 biennium:

- 278 acres of new buffer planted
 - 23 miles
- 3,094 acres maintenance
- 20,995 native plants installed



Projects demonstrated significant partnerships!

Project Types

- Outreach
- Technical Assistance/Planning
- Riparian Restoration
- Maintenance
- Permanent Protection
(acquisition/easements)
- Tiered Incentives

*Willow stakes installed in Spokane, Lower
Hangman Creek*





Planning with landowners in Okanogan

Riparian Outreach

Advertising, promotional materials,
translation, social media, workshops,
podcasts, events, door-knocking

Technical Assistance, Planning, Design

Site visits, GIS analysis, project
development, permitting, monitoring
project implementation, training

Restoration Projects

Activities that contribute to functional improvements-

- Riparian buffer installation
- BDA/PAL installation
- Livestock exclusion practices
 - Off-stream watering
 - Fencing

Working with beaver in Pend Oreille



Maintenance



Newly installed or existing riparian buffers eligible (up to 10 years!)

Types of work

Supplemental/re-planting

Watering/irrigation

Mowing/pulling weeds

Weed control

Herbivorous animal measures

Removing mulch/tubes

Repairs to low-tech instream practices



Exclusion Fencing, Ferry CD

Permanent Protection

Conservation easement or fee-simple acquisition

Matching funds towards RMZ portion of the acquisition

Tiered Incentives

Annual payments for buffer installation

What's to Come

- Funding opportunities for permanent protection, restoration projects
- Refine tiered incentives guidelines
- Program adaptive management
 - Adjustments to grant award timelines
 - Guidelines refinements



Opportunities to Engage

- Contact your local CD for partnership opportunities
- SCC GovDelivery notices
 - RGP news
 - Guidelines updates and comment periods

www.scc.wa.gov/programs/riparian-grant-program

Field visit in Whitman County



Riparian Data Engine (RDE)

Ken Muir

Riparian and Shrubsteppe Biologist
Priority Habitat and Species (PHS) Section



Washington
Department of
**FISH &
WILDLIFE**



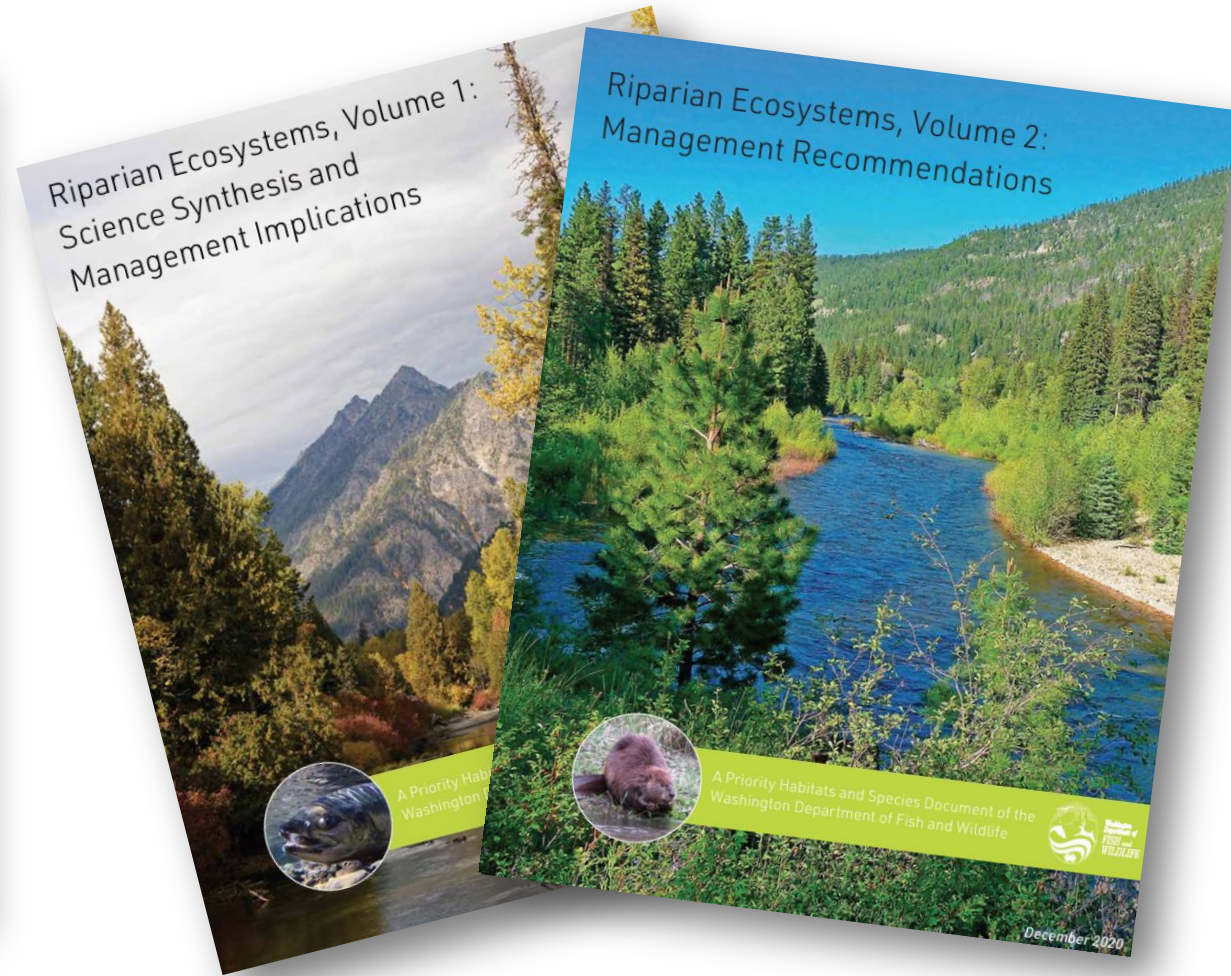
Identifying limiting factors within riparian ecosystems will guide **strategic prioritization** of restoration efforts.





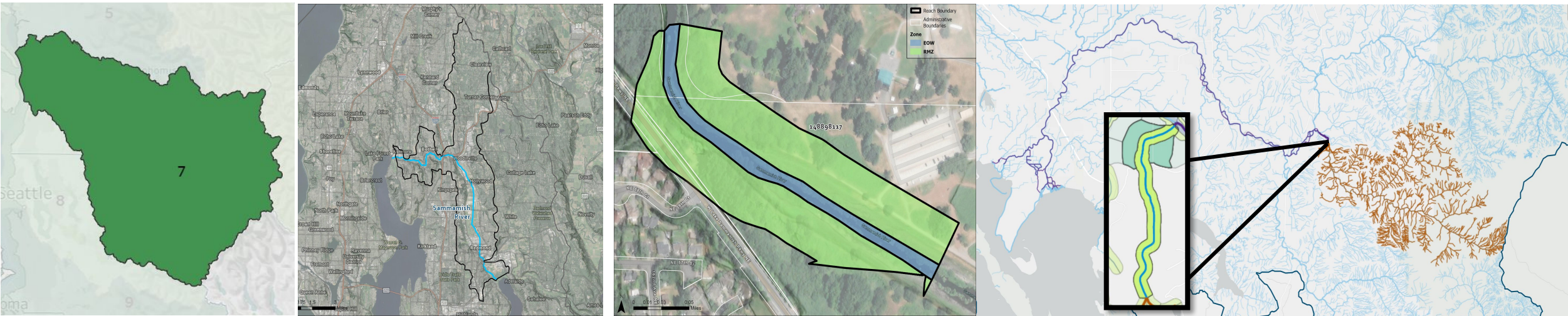
Riparian Data Engine

Riparian Ecosystems



What is the Riparian Data Engine?

The RDE is an online decision support **tool** that stores, aggregates, and retrieves **data** to help **users** identify, evaluate, and prioritize **riparian restoration projects**.



RDE Brings Together Many Datasets

Boundary Data

- Counties
- WRIAs
- Watersheds (HUC 10, HUC12)
- Cities/Urban Growth Areas (UGAs)
- Parcels



WDFW Data

- RMZs and Extent of Observed Water
- High Resolution Land Cover (HRLC)
- High Resolution Change Detection (HRCDC)
- Riparian Canopy Pattern Metric
- Fish Passage Barriers



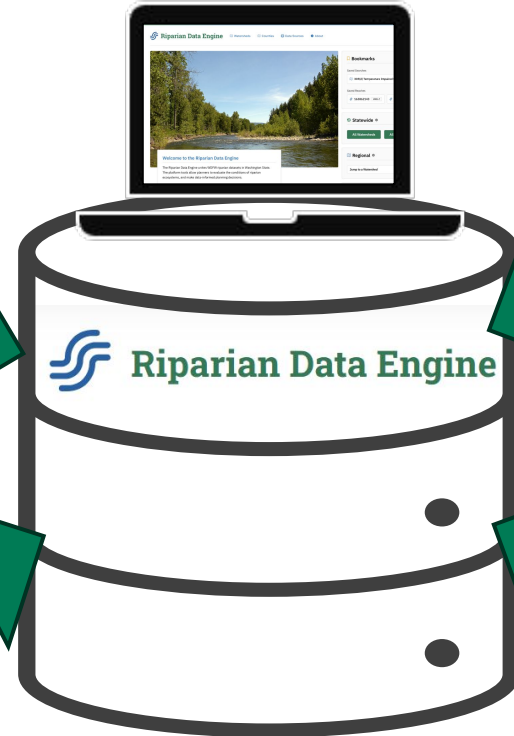
Fish Data

- Statewide Integrated Fish Distribution (SWIFD)

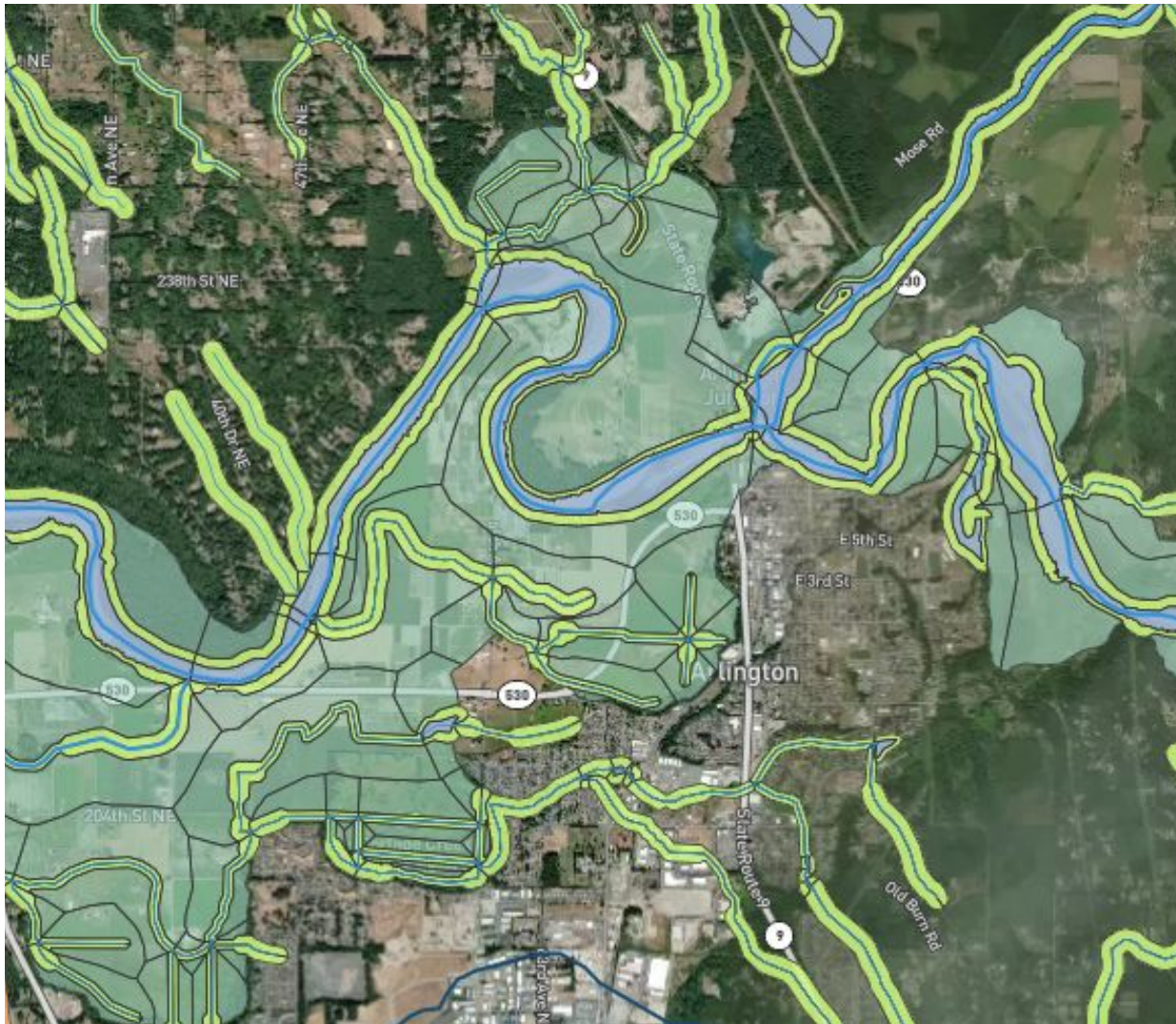


Other Data

- Protected Areas Database (USGS)
- Temperature Impaired Reaches (WA Ecology)
- Streams & Watersheds (NHD)



RDE analyzes three types of areas



Extent of
Observed Water



Riparian
Management Zone



Floodplain



RDE Example

Area of Interest

COUNTY

Zone

- Extent of Observed Water (EOW)
- Riparian Management Zone (RMZ)
- Floodplain

Filters [Reset filters](#)

- Salmon and Stream Temperature
- Hydrology
- Riparian Land Cover
- Fish Passage Barriers & Access
- Land Use, Ownership & City/UGA

Yakima County

Map Land

+

-

↑

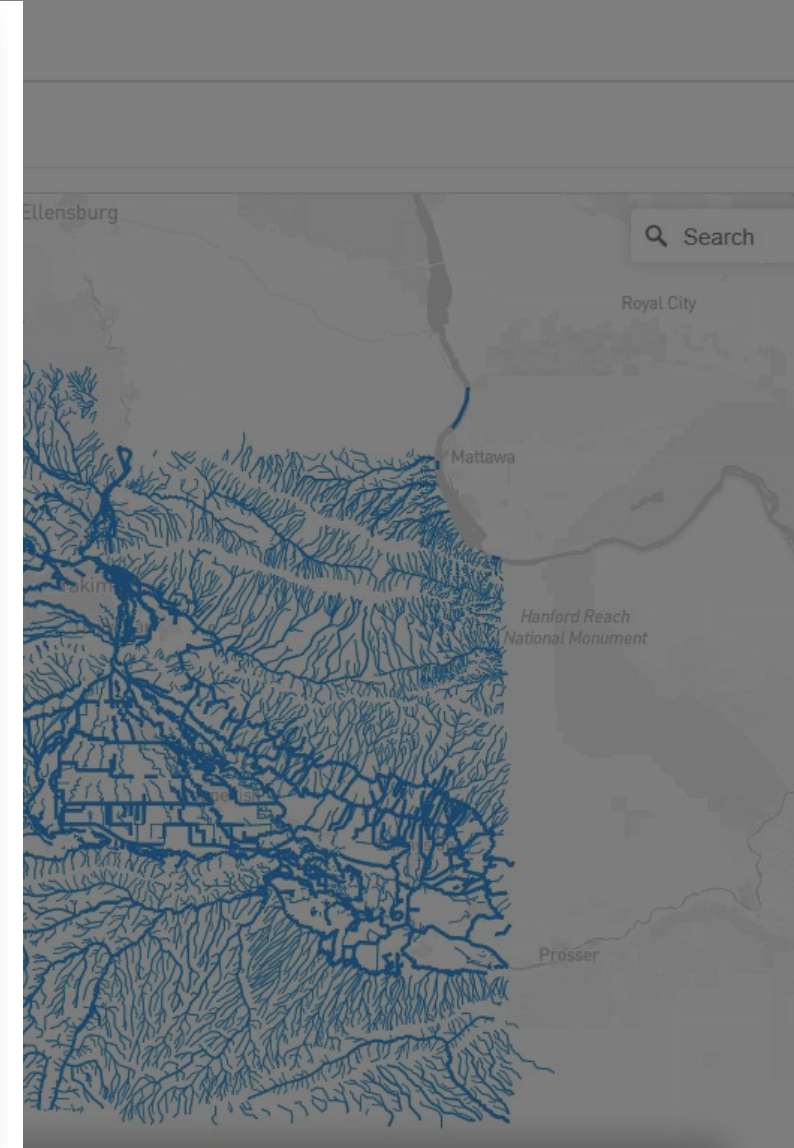
Gifford Pinchot National Forest

Yakima

Partial LiDAR Coverage - Impacts Land Cover and topographic metrics

County Acres	2,749,050
Reach Acres	344,547
Riparian Acres	312,000
Stream Miles	11,751
Percent Tree Cover	22.7%
Percent Vegetated	59.3%
Percent Non-Vegetated	15%
Percent Riparian Change (Overall)	0.2%
Percent Riparian Change (Human-caused)	0%
Riparian Tree Loss Acres (Natural Causes)	4,052
Riparian Tree Loss Acres (Other Human Causes)	13
# Impassable Fish Passage Barriers	126

[View County](#)



Example of RDE

Yakima County

Area of Interest

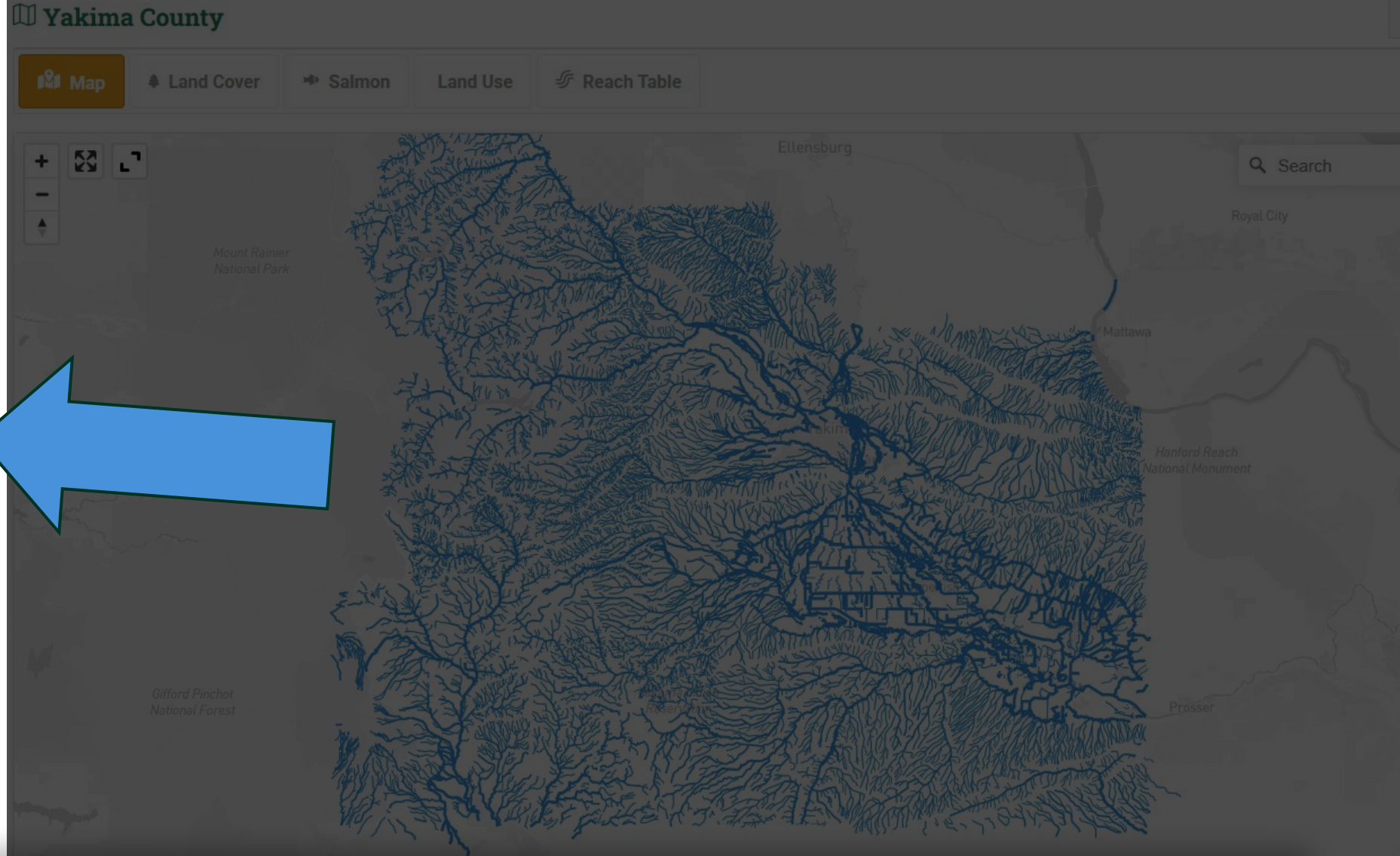
COUNTY

Zone [?](#)

- Extent of Observed Water (EOW)
- Riparian Management Zone (RMZ)
- Floodplain

Filters [Reset filters](#)

- Salmon and Stream Temperature
- Hydrology
- Riparian Land Cover
- Fish Passage Barriers & Access
- Land Use, Ownership & City/UGA

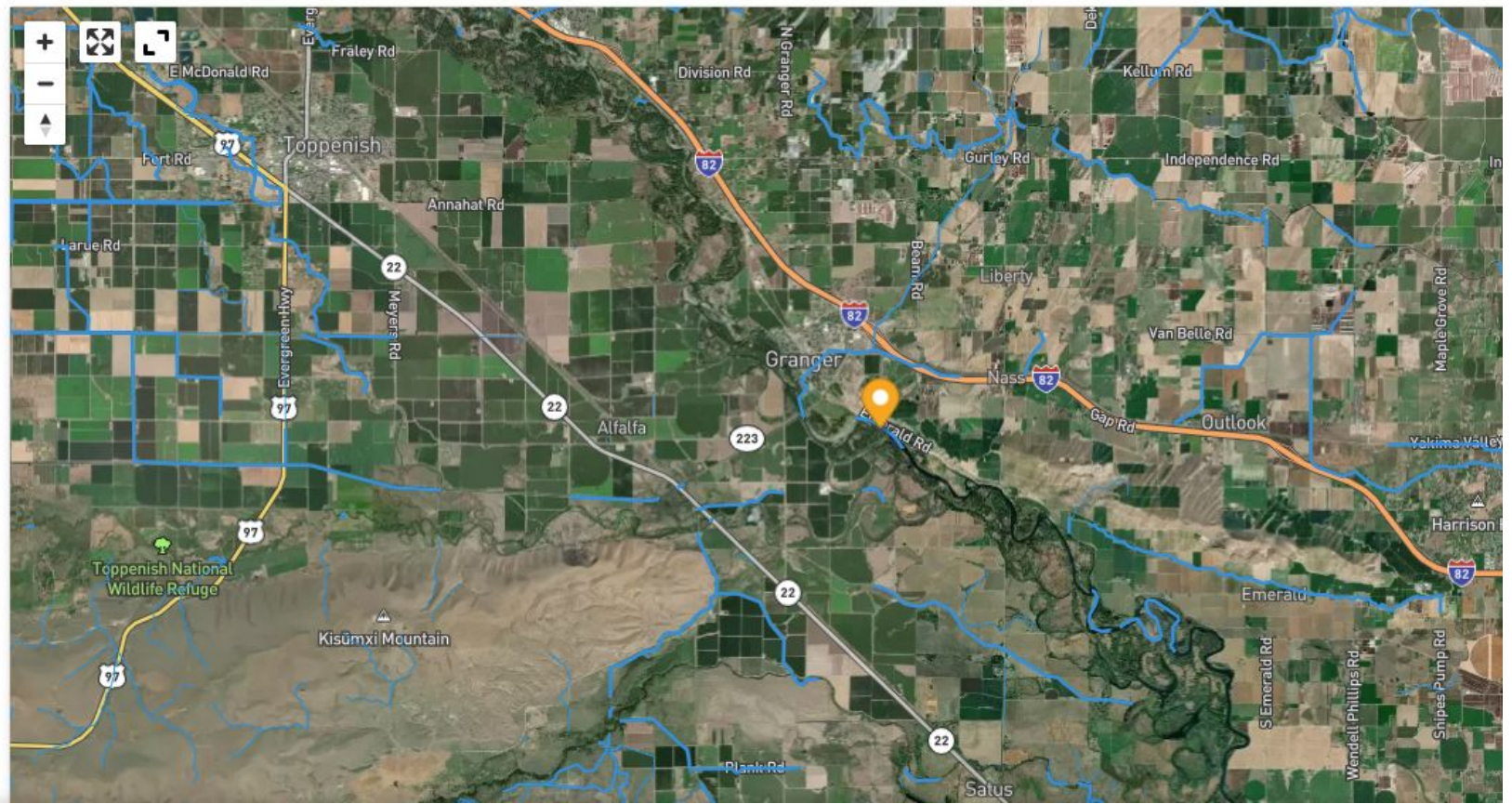


Example of RDE

Yakima County

Yakima County

- Map
- Land Cover
- Salmon
- Land Use
- Reach Table



Area of Interest

COUNTY

Zone

- Extent of Observed Water (EOW)
- Riparian Management Zone (RMZ)
- Floodplain

Filters

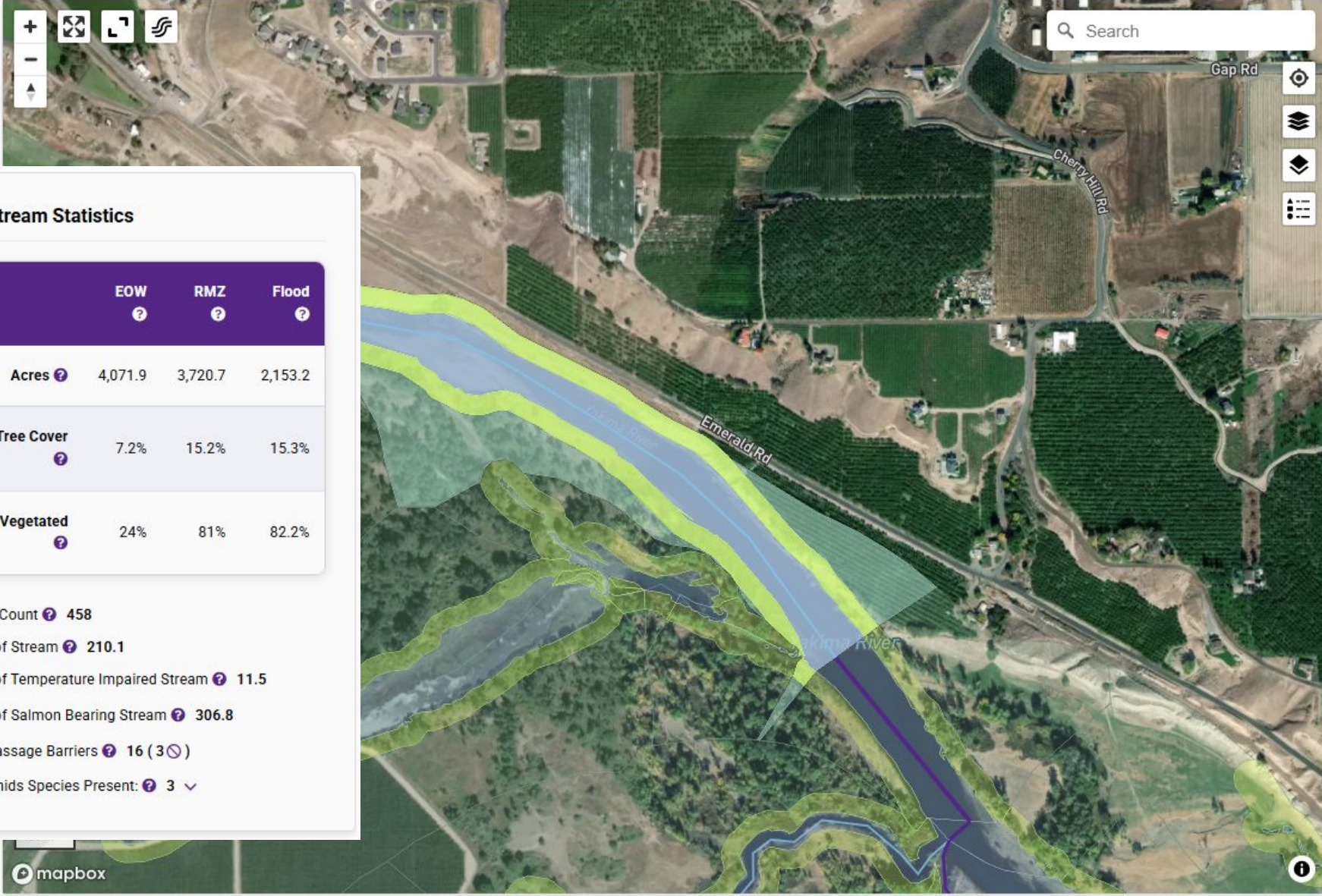
[Reset filters](#)

- Salmon and Stream Temperature
- Hydrology
- Riparian Land Cover
 - Reach Percent Vegetated: 0% to 50%
- Fish Passage Barriers & Access
- Land Use, Ownership & City/UGA

Example of RDE

Yakima County

RDE Example



Reach Yakima River

Upstream Statistics

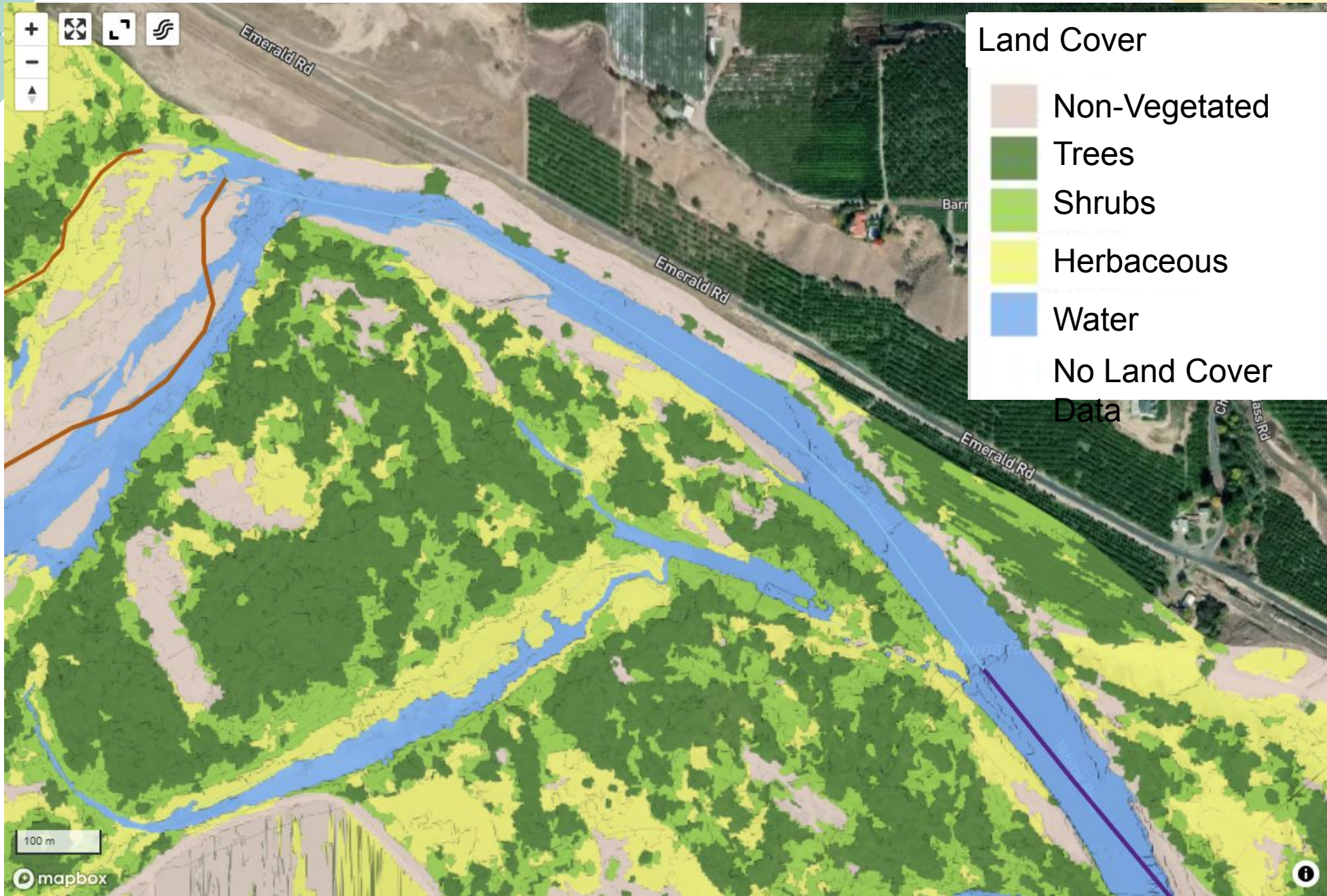
	EOW ?	RMZ ?	Flood ?
Acres ?	4,903.9	45,510.9	20,074.1
Percent Tree Cover ?	18.4%	20.2%	12.3%
Percent Vegetated ?	40.7%	71.4%	70.4%

- Reach Count ? 4,120
- Miles of Stream ? 1,891.7
- Miles of Temperature Impaired Stream ? 30.9
- Miles of Salmon Bearing Stream ? 560.3
- Fish Passage Barriers ? 134 (29)
- Salmonids Species Present: ? 3

Downstream Statistics

	EOW ?	RMZ ?	Flood ?
Acres ?	4,071.9	3,720.7	2,153.2
Percent Tree Cover ?	7.2%	15.2%	15.3%
Percent Vegetated ?	24%	81%	82.2%

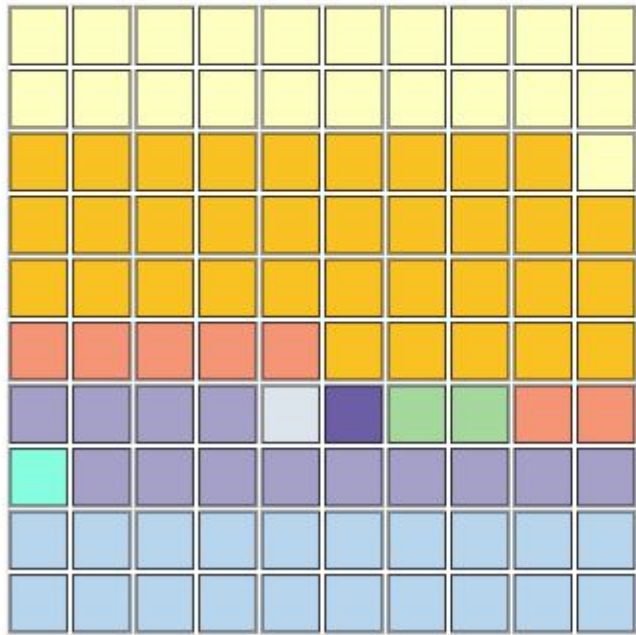
- Reach Count ? 458
- Miles of Stream ? 210.1
- Miles of Temperature Impaired Stream ? 11.5
- Miles of Salmon Bearing Stream ? 306.8
- Fish Passage Barriers ? 16 (3)
- Salmonids Species Present: ? 3



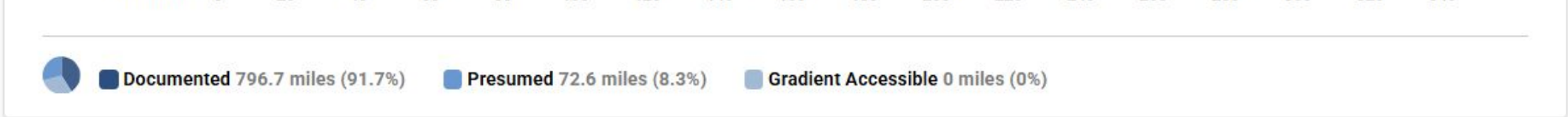
Map Land Cover Salmon **Land Use** Reach Table

Area by Land Use ?

All Reach Downstream Upstream



- Agriculture 9,168.6 acres (21.4%)
- Agriculture (Open Space Tax Act) 14,427.6 acres (33.7%)
- Commercial/Industrial/Other 3,034.4 acres (7.1%)
- Forestry (Designated Forestland) 640.2 acres (1.5%)
- Forestry (Open Space Tax Act)
- Open Space land (Open Space Tax Act) 415 acres (1%)
- Residential 5,544.2 acres (13%)
- Resource Production and Extraction 345.4 acres (0.8%)
- Infrastructure 616.5 acres (1.4%)
- Undeveloped 8,567.3 acres (20%)





Thank You

Ken Muir

ken.muir@dfw.wa.gov



[Riparian Data Engine \(RDE\)](#)

