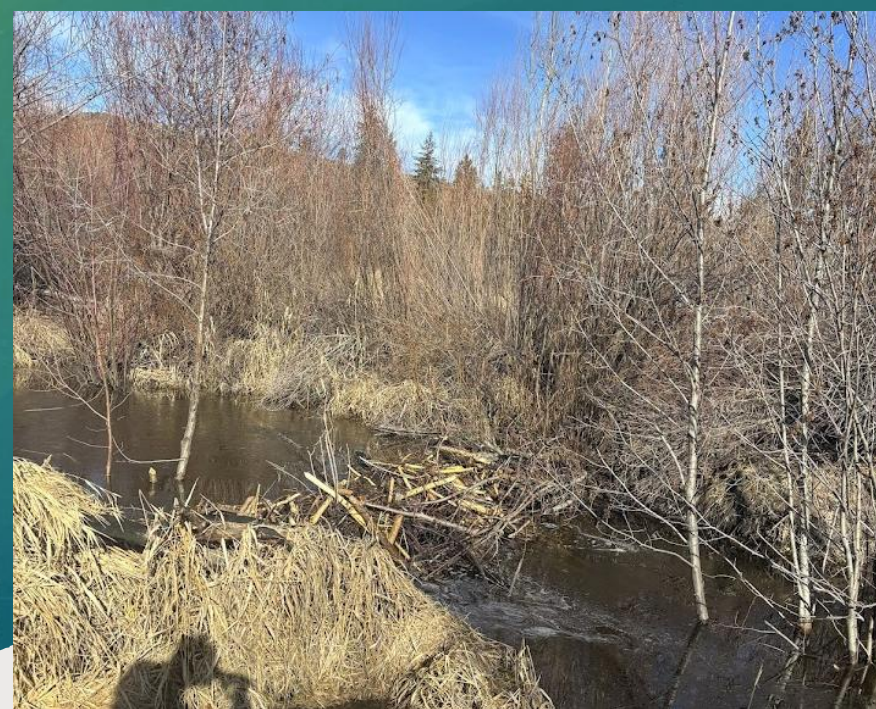
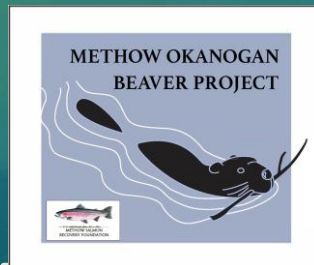


LAND STEWARDSHIP IS A RELATIONSHIP

What Chiliwist Creek Has Taught Us



Gertrude Webster – Land Steward
Chevelle Yeckel – Okanogan CD
Alexa Whipple – MOBP/MSRF



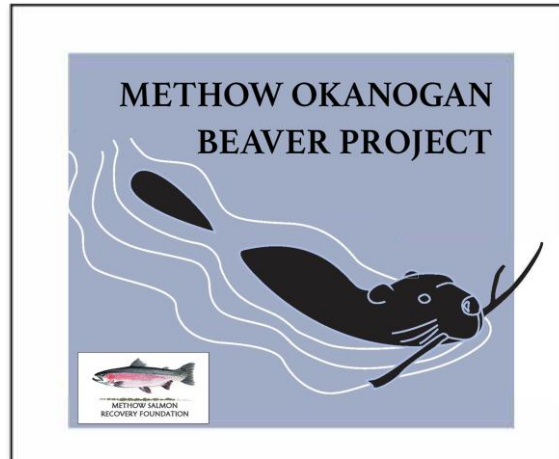
GERTRUDE WEBSTER





CHEVELLE YECKEL

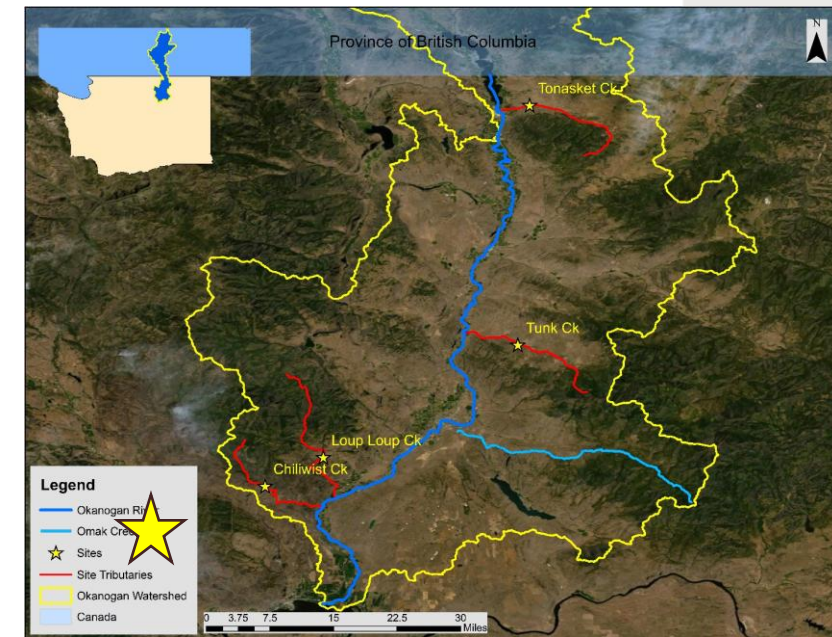
ALEXA WHIPPLE



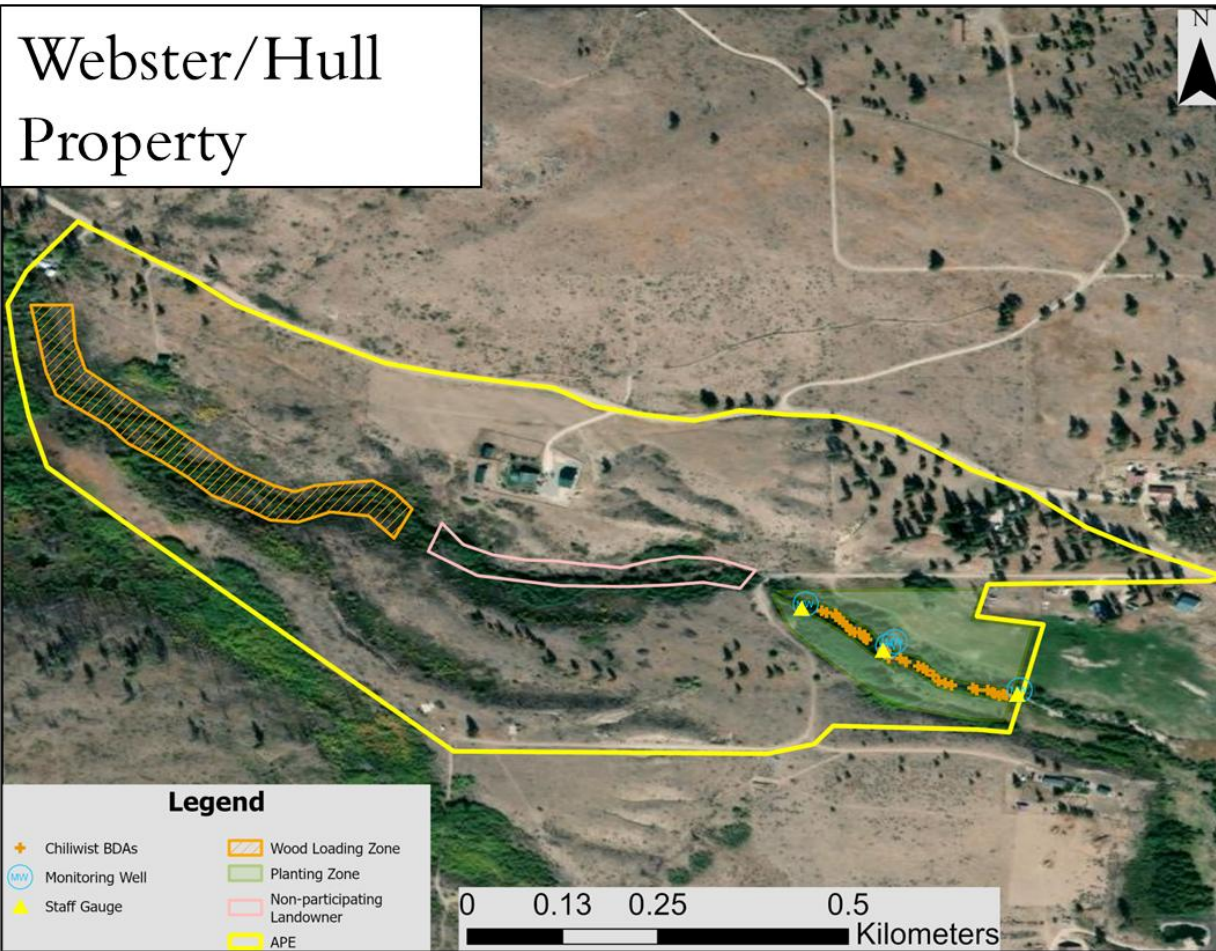
PLACE, TIME, & LIVED HISTORY

CHILIWIST CREEK

MALOTT, WA



WARBLER WAY ON CHILIWIST CREEK



APRIL FRESHET



AUGUST
ARIDITY



WILDFIRE, STORMS & DEBRIS FLOWS





CHILIWIST CREEK
CARLTON COMPLEX WILDFIRES
& DEBRIS FLOWS - 2014



CHILIWIST CREEK
CARLTON COMPLEX WILDFIRES
& DEBRIS FLOWS - 2014

SEVERE CHANNEL INCISION

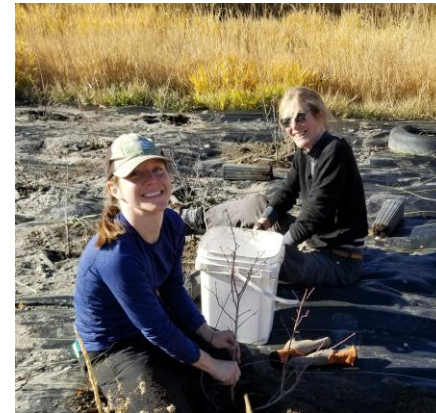
- Disconnecting stream from floodplain
- Lowering groundwater
- Decreasing riparian vegetation recruitment
- Increasing upland vegetation
- Reduced habitat quality
- Reduced water retention



PROJECT ACTIONS & PHASING

Okanogan Conservation District

- Consultation - 2020
- Planting
 - October 2021 & 2024



PROJECT PHASING

Methow Okanogan Beaver Project

- Consultation – September 2020
- Funding proposal – Late 2020
- Permitting – 2021-22
- Implementation – 2022
- Adaptive Management & Plant Maintenance – 2023-2025



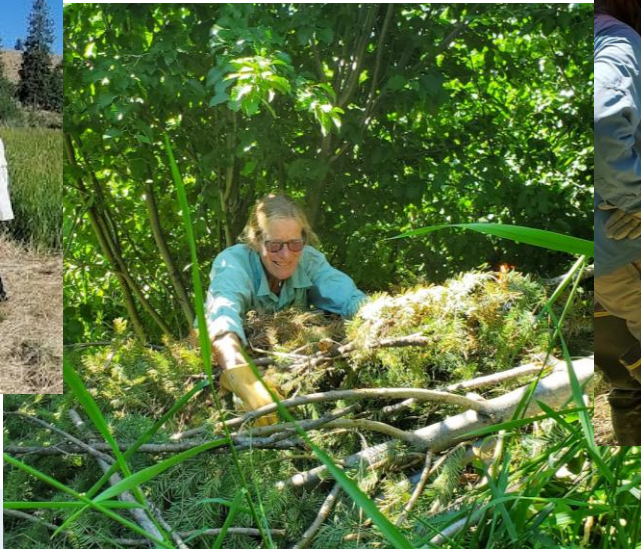
PROJECT PHASING

Methow Okanogan Beaver Project

- Consultation – September 2020
- Funding proposal – Late 2020
- Permitting – 2021-22
- Implementation – 2022
- Adaptive Management & Plant Maintenance – 2023-2025



RESTORATION IN MOTION



WILDLIFE RETURNS TO WARBLER WAY



LONGTERM RELATIONSHIPS WITH THE LAND, WITH EACH OTHER

- Building Trust
- Relationships require time, not just outcomes & metrics
- Projects need long-term stewardship, engagement & funding



HOPE, RESPONSIBILITY, REFLECTION



KEY TAKEAWAYS

- Stewardship is Relational
- Outcomes emerge through continuity
- Funding must honor time





THANK YOU!

